

Supporting Information

Reaction Behavior of a Silicide Electrode with Lithium in an Ionic-Liquid Electrolyte

Yasuhiro Domi,^{†,§} Hiroyuki Usui,^{†,§} Kai Sugimoto,^{‡,§} Kazuma Gotoh,^{⊥, #} Kei Nishikawa,^{||} and Hiroki Sakaguchi^{,†,§}*

[†]Department of Chemistry and Biotechnology, Graduate School of Engineering, Tottori University, Minami 4–101, Koyama–cho, Tottori 680–8552, Japan

[‡]Course of Chemistry and Biotechnology, Department of Engineering, Graduate School of Sustainability Science, Tottori University, Minami 4–101, Koyama–cho, Tottori 680–8552, Japan

[§]Center for Research on Green Sustainable Chemistry, Tottori University, Minami 4–101, Koyama–cho, Tottori 680–8552, Japan

[⊥]Graduate School of Natural Science & Technology, Okayama University, 3-1-1 Tsushima-naka Okayama, 700-8530, Japan.

[#]Element Strategy Initiative for Catalysis and Batteries (ESICB), Kyoto University, Nishikyo-ku, Kyoto, 615-8245, Japan.

^{||}International Center of Young Scientists, National Institute for Materials Science, 1–1 Namiki, Tsukuba 305–0044, Japan

*Corresponding author: Hiroki Sakaguchi

Tel/Fax: +81-857-31-5265, E-mail: sakaguch@tottori-u.ac.jp

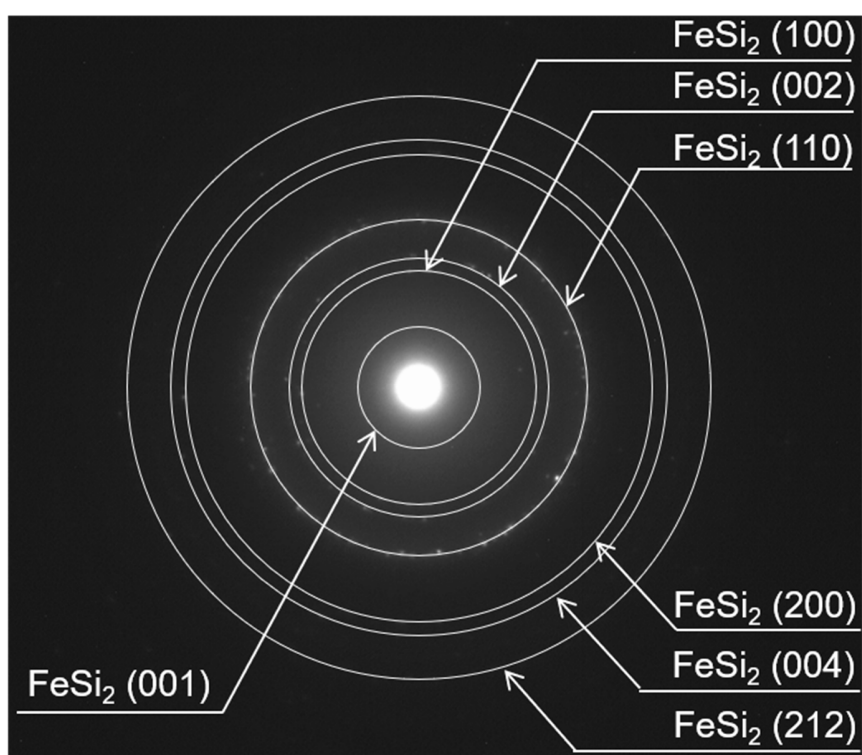


Figure S1. SAED pattern of the FeSi₂ electrode after the 5th cycle in 1 M LiFSA/Py13-FSA at 50 mA g⁻¹.

Table S1. Summary of *d*-spacings and crystal phase data derived from SAED analysis of the FeSi₂ electrode (Figure S1). The table includes ICSD standard *d*-spacing values of FeSi₂ (01-073-1843).

SAED	ICSD	
<i>d</i> -spacing / nm	<i>d</i> -spacing / nm	Crystal phase (<i>h k l</i>)
0.5220	0.5128	FeSi ₂ (0 0 1)
0.2708	0.2684	FeSi ₂ (1 0 0)
0.2477	0.2564	FeSi ₂ (0 0 2)
0.1901	0.1898	FeSi ₂ (1 1 0)
0.1347	0.1342	FeSi ₂ (2 0 0)
0.1284	0.1282	FeSi ₂ (0 0 4)
0.1086	0.1087	FeSi ₂ (2 1 2)

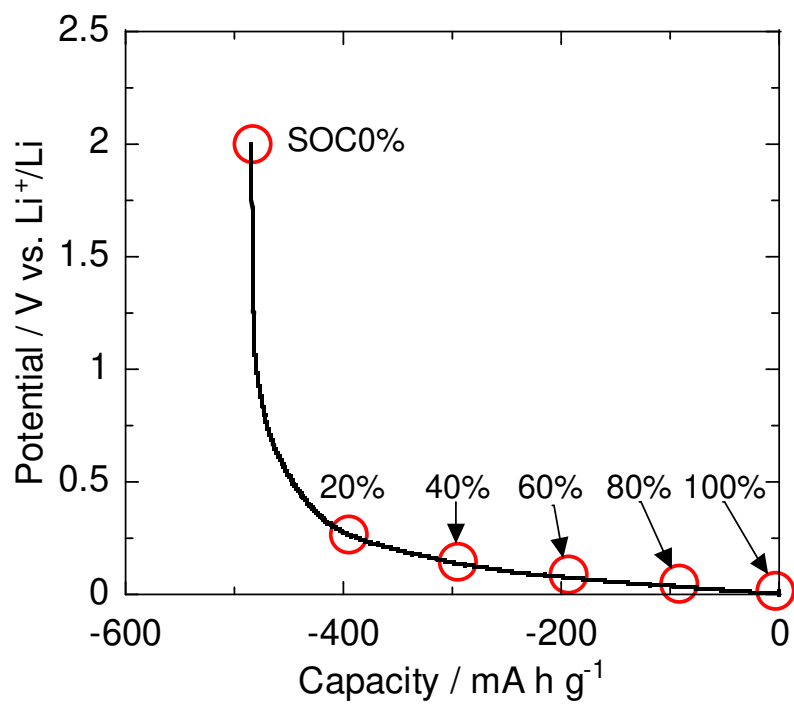


Figure S2. Charge curve of the FeSi₂ electrode during the 5th cycle in 1 M LiFSA/Py13-FSA at 50 mA g⁻¹.

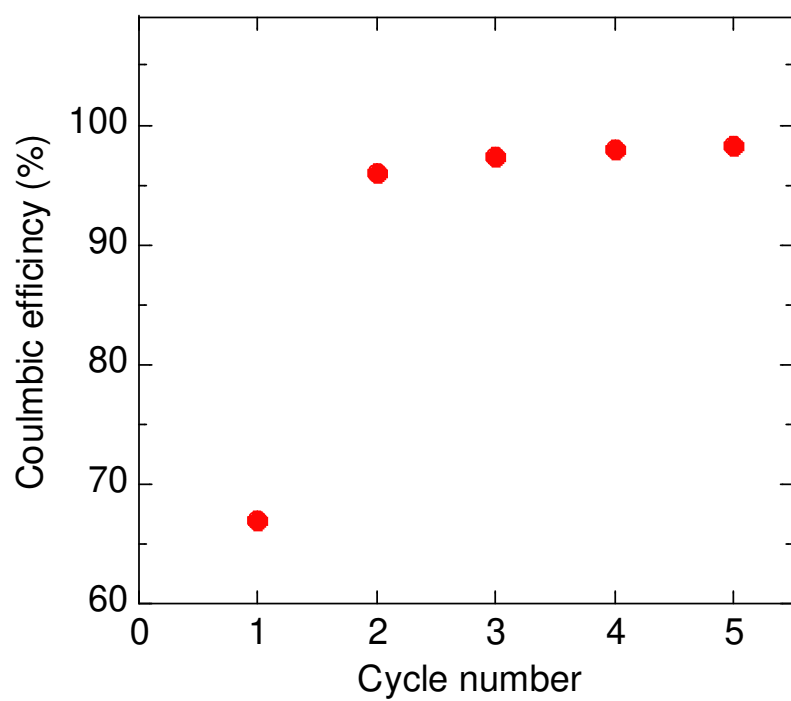


Figure S3. Cycle-dependency of Coulombic efficiency of the FeSi₂ electrode in 1 M LiFSA/Py13-FSA at 50 mA g⁻¹.

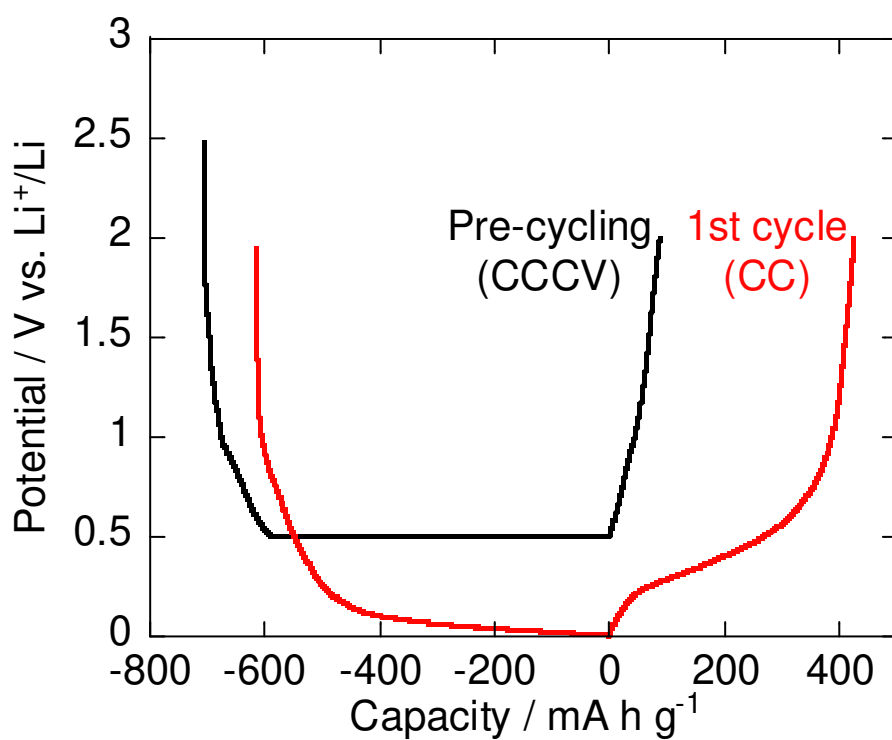


Figure S4. First charge-discharge curve of the FeSi₂ electrode after pre-cycling in 1 M LiFSA/Py13-FSA at 50 mA g⁻¹.