

論文 Article

# The mite taxa created by S. Ehara and his coauthors with depositories of their type series (Arachnida: Acari)

Shôzô EHARA<sup>1</sup>, Kazunori OHASHI<sup>2</sup>, Tetsuo GOTOH<sup>3</sup> and Nobuo TSURUSAKI<sup>4</sup>

江原昭三と共著者によって創設されたダニ類のタクサ（分類群）およびこれらのタイプ・シリーズの保管施設（クモ形綱・ダニ目）

江原昭三<sup>1</sup>・大橋和典<sup>2</sup>・後藤哲雄<sup>3</sup>・鶴崎展巨<sup>4</sup>

**Abstract:** The mite taxa (205 species, 4 genera, 1 subgenus, and 1 tribe) created by the late Dr. S. Ehara and his coauthors are listed here. The original names of the taxa are used but listed under each taxa is the new name (if it has changed), the type localities, habitats and depositories of each type series (along with Museum and accession number(s) of holotype and a part of paratypes). The full list of Ehara's publications is also presented as well as his obituary.

**Key words:** Arachnida, Acari, taxa, type series, depository, type locality, type habitat, obituary

**要旨:** 江原昭三とその共著者によって創設されたダニ類タクサ（1族、4属、1亜属、205種）は多くの論文に分かれて発表されているので、これらのタクサをリストアップし、合わせてタイプ・シリーズの保管施設（博物館など）を記した。すなわち、原記載のままの学名、現在の和名（丸かっこ内）、学名記載頁、図番号、タイプ産地とタイプ生息地、タイプ・シリーズの保管施設名（ホロタイプのすべてと一部のパラタイプについては標本番号）を記録した。ここで取り上げたタクサの一部は、こんにち変更されている場合があり、この場合には現行の学名が付記されている。巻末には、江原昭三著作目録を掲げる。

The first author of this article, Shôzô Ehara has described a total of 1 tribe, 4 genera, 1 subgenus, and 205 species of mites (Arachnida: Acari) as new in his 119 solo and 86 joint articles since 1954. The type specimens of those species have mainly been deposited in the following three museums and laboratories: Zoological Institute of Hokkaido University (now Hokkaido University Museum) for species described between 1954 and 1967; Biological Institute, Faculty of Education (now Faculty of Regional Sciences) of Tottori University (1968–1993); and National Science Museum of Tokyo (1994–present).

However, due to restoration work to the building of the Faculty of Regional Sciences of Tottori University for enhancing earthquake safety, launched in July 2008, the type specimens including a total of 92 holotypes stored therein were forced to move somewhere else at least during the period of construction. Taking various circumstances into consideration, we decided to relegate those specimens to three different museums: the National Science Museum, Tokyo; the Hokkaido University Museum; and the Tottori Prefectural Museum, and have managed to finish sorting and shipping of the specimens.

<sup>1</sup> Hamasaka 2-15-7, Tottori, 680-0001 Japan  
〒 680-0001 鳥取市浜坂 2-15-7

<sup>2</sup> Agricultural Chemicals Research Laboratory, Sumitomo Chemical, Co., Ltd., Takarazuka, Hyogo, 665-8555 Japan  
〒 665-8555 兵庫県宝塚市高司 4-2-1 住友化学（株）農業化学品研究所  
E-mail: oohasikznr@yahoo.co.jp

<sup>3</sup> Faculty of Agriculture, Ibaraki University, Ami, Ibaraki, 300-0393 Japan  
〒 300-0393 茨城県稲敷郡阿見町中央 3-21-1 茨城大学農学部応用動物昆虫学研究室  
E-mail: gotoh@mx.ibaraki.ac.jp

<sup>4</sup> Faculty of Regional Sciences, Tottori University, Tottori, 680-8551 Japan  
〒 680-8551 鳥取市湖山町南 4-101 鳥取大学地域学部生物学研究室  
E-mail: ntsuru@rstu.jp

This is a complete list of the mite species described by Ehara and his coworkers that was prepared primarily to announce the change of type depositories of some of the taxa.

### Format of the list

The species are listed according to the chronological order, namely according to the date of publication where the taxa were described. Information on each species comprises: 1) scientific name of the species as it appear in the original description, with the family name to which the species belongs in parentheses; 2) current name of the species, when the species is synonymized with another senior synonym or the name is modified due to generic transfer; 3) Japanese name when it is available; 4) author(s) and publication date of original description, page number of description, figure numbers; 5) type locality; 6) type habitat, where the holotype was collected; 7) type series (with accession numbers) and depositories (Note that the number of paratypes recorded here means that of paratype slides and hence it does not always correspond to the number of paratype specimens because each of those slides often carries more than one specimen); 8) notes.

The currently valid name of each species is in bold.

Abbreviations of depositories and collection sites are as follows:

APAES: Aomori Prefectural Apple Experimental Station, Aomori

ARC-PPRI: ARC-Plant Protection Research Institute, Pretoria, South Africa

AUW: Agricultural University, Wageningen, The Netherlands

BLMSC: Biological Laboratory, Matsuyama Shinonome Junior College, Matsuyama

CBNU: Department of Biology, ChonBuk National University, Korea

FRIM: Forest Research Institute of Malaysia, Kepong, Selangor, Malaysia

HUM: Hokkaido University Museum, Sapporo

KUM: Kyoto University Museum, Kyoto

MZB: Museum Zoologicum Bogoriense, Jl. Raya Jakarta Bogor, Indonesia

NJAU: Department of Entomology, Nanjing Agricultural University, Nanjing, China

NSMT: National Science Museum, Shinjuku-ku, Tokyo

TRPM: Tottori Prefectural Museum, Tottori

UCD, DE: Department of Entomology, University of California, Davis

USNM: United States National Museum, Washington D. C.

ZIHU: Zoological Institute of Hokkaido University (now the HUM)

Other abbreviations:

Jpn N = Japanese name for the taxon. As a rule, Japanese name is applied

Current N = current name, namely the name currently valid for the taxon

Type loc. = type locality

Type hab. = type habitat, namely plant name or other type of microhabitat where the holotype was originally collected

### Taxa Described by S. Ehara and his Coauthors

#### 1. *Paratetranychus hondoensis* Ehara, 1954 (Tetranychidae)

Current N: ***Oligonychus hondoensis* (Ehara, 1954)**

(Jpn N: Sugino-hadani)

Ehara 1954a, p. 102, figs. 1–5. Type loc.: Sibusawa, Kanagawa Pref., Honshu, JAPAN. Type hab.: *Cryptomeria japonica* (Jpn N: Sugi. Taxodiaceae).

Holotype (ZIHU-3390) and 4 paratypes in HUM.

#### 2. *Paratetranychus inouei* Ehara, 1954 (Tetranychidae)

Current N: ***Oligonychus ununguis* (Jacobi, 1905)**

(Jpn N: Todomatsuno-hadani)

Ehara 1954a, p. 104, figs. 6–9. Type loc.: Kawayu, Prov. Kushirokoku, Hokkaido, JAPAN. Type hab.: *Picea jezoensis* (Jpn N: Ezomatsu. Pinaceae).

Holotype (ZIHU-3391) and 5 paratypes in HUM.

#### 3. *Eotetranychus kankitus* Ehara, 1955 (Tetranychidae)

(Jpn N: Miyake-akehadani)

Ehara 1955a, p. 178, figs. 1–8. Type loc.: Hisatomo-mura, Is. Ôsaki-Shimo-jima, Hiroshima Pref., Honshu, JAPAN. Type hab.: citrus (Rutaceae).

Holotype (ZIHU-3392) and 8 paratypes in HUM.

#### 4. *Paratetranychus karamatus* Ehara, 1956 (Tetranychidae)

Current N: ***Oligonychus karamatus* (Ehara, 1956)**

(Jpn N: Karamatsu-tsumehadani)

Ehara 1956a, p. 247, figs. 5–10. Type loc.: Nanaé, the vicinity of Hakodate, Hokkaido, JAPAN. Type hab.: *Larix leptolepis* (Jpn N: Karamatsu. Pinaceae).

Holotype (ZIHU-3393) and 26 paratypes in HUM.

5. *Eotetranychus uchidai* Ehara, 1956 (Tetranychidae)

(Jpn N: Uchida-akehadani)

Ehara 1956c, p. 139, figs. 1–10. Type loc.: Sapporo, Hokkaido, JAPAN. Type hab.: *Ulmus davidiana* Planch var. *japonica* (Rehd.) Nakai (Jpn N: Harunire. Ulmaceae).

Holotype (ZIHU-3394) and 14 paratypes in HUM.

6. *Tetranychus truncatus* Ehara, 1956 (Tetranychidae)

(Jpn N: Ishii-namihadani)

Ehara 1956e, p. 507, figs. 28–31. Type loc.: Suginami, Tokyo, Honshu, JAPAN. Type hab.: mulberry (Jpn N: Kuwa. Moraceae).

Holotype (ZIHU-3395) and 7 paratypes in HUM.

7. *Schizotetranychus recki* Ehara, 1957 (Tetranychidae)

(Jpn N: Himesasa-matahadani)

Ehara 1957a, p. 20, figs. 25–35. Type loc.: Sapporo, Hokkaido, JAPAN. Type hab.: *Sasa* bamboo (Jpn N: Sasa-zoku. Bambusaceae).

Holotype (ZIHU-3396) and 13 paratypes in HUM.

8. *Typhlodromus japonicus* Ehara, 1958 (Phytoseiidae)

Current N: *Scapulaseius japonicus* (Ehara, 1958)

(Jpn N: Yamato-kaburidani)

Ehara 1958a, p. 56, figs. 7–9. Type loc.: Koshino-o, Nishimera, Miyazaki Pref., Kyushu, JAPAN. Type hab.: *Mallotus japonicus* (Thunb. ex Murray) Mueller-Arg. (Jpn N: Akamegashiwa. Euphorbiaceae).

Holotype (ZIHU-3397) and 4 paratypes in HUM.

9. *Paratetranychus clavatus* Ehara, 1959 (Tetranychidae)

Current N: *Oligonychus clavatus* (Ehara, 1959)

(Jpn N: Matsu-tsumehadani)

Ehara 1959a, p. 97, figs. 1–13. Type loc.: Hoshida, Katano, Osaka Pref., Honshu, JAPAN. Type hab.: *Pinus densiflora* Sieb. & Zucc. (Jpn N: Akamatsu. Pinaceae) or *Pinus thunbergii* Parl. (Jpn N: Kuromatsu. Pinaceae).

Holotype (ZIHU-3398) and 17 paratypes in HUM.

10. *Typhlodromus vulgaris* Ehara, 1959 (Phytoseiidae)

(Jpn N: Futsuu-kaburidani)

Ehara 1959b, p. 286, figs. 1–5. Type loc.: Sapporo, Hokkaido, JAPAN. Type hab.: apple (Jpn N: Ringo. Rosaceae).

Holotype (ZIHU-3399) and 10 paratypes in HUM.

11. *Amblyseius* (s. str.) *tsugawai* Ehara, 1959 (Phytoseiidae)

(Jpn N: Michinoku-kaburidani)

Ehara 1959b, p. 290, figs. 12–13. Type loc.: Kuroishi, Aomori Pref., Honshu, JAPAN. Type hab.: apple (Jpn N: Ringo. Rosaceae).

Holotype in APAES.

12. *Amblyseius orientalis* Ehara, 1959 (Phytoseiidae)

(Jpn N: Tôyô-kaburidani)

Ehara 1959b, p. 291, figs. 14–16. Type loc.: Sapporo, Hokkaido, JAPAN. Type hab.: *Quercus crispula* Blume (Jpn N: Mizunara. Fagaceae).

Holotype (ZIHU-3400) and 4 paratypes in HUM.

13. *Tetranychus phaselus* Ehara, 1960 (Tetranychidae)

(Jpn N: Sagami-namihadani)

Ehara 1960a, p. 238, figs. 28–39. Type loc.: Ninomiya, Kanagawa Pref., Honshu, JAPAN. Type hab.: *Phaseolus vulgaris* Linnaeus (Jpn N: Ingen-mame. Fabaceae).

Holotype (ZIHU-3401) and 11 paratypes in HUM.

14. *Bdella uchidai* Ehara, 1961 (Bdellidae)

(Jpn N: Hime-iso-tengudani)

Ehara 1961b, p. 249, figs. 4–12. Type loc.: Ranshima, Hokkaido, JAPAN. Type hab.: the rocks or stones in the intertidal zone.

Holotype (ZIHU-3402) and 30 paratypes in HUM.

15. *Thoribdella japonica* Ehara, 1961 (Bdellidae)

Current N: *Bdellodes (Hoplopscirus) japonicus* (Ehara, 1961)

(Jpn N: Yamato-tengudani)

Ehara 1961b, p. 258, figs. 26–32. Type loc.: Sapporo, Hokkaido, JAPAN. Type hab.: ezo-spruce (Jpn N: Ezomatsu. Pinaceae).

Holotype (ZIHU-3403) and 6 paratypes in HUM.

16. *Phytoseius (Dubininellus) nipponicus* Ehara, 1962

(Phytoseiidae)

(Jpn N: Kebuto-kaburidani)

Ehara 1962a, p. 55, figs. 7–11. Type loc.: Den-en-chôfu, Tokyo, Tokyo Pref., Honshu, JAPAN. Type hab.: chrysanthemum (Jpn N: Kiku. Asteraceae).

Holotype (ZIHU-3404) and 2 paratypes in HUM.

17. *Paracheyletia bakeri* Ehara, 1962 (Cheyletidae)  
Current N: ***Hemicheyletia bakeri* (Ehara, 1962)**  
(Jpn N: Uroko-tsumedani)  
Ehara 1962b, p. 109, figs. 2, 3. Type loc.: Sapporo, Hokkaido, JAPAN. Type hab.: *Hibiscus rosa-sinensis* (Jpn N: Bussôge. Malvaceae).  
Holotype (ZIHU-3405) and 3 paratypes in HUM.
18. ***Oligonychus pustulosus* Ehara, 1962** (Tetranychidae)  
(Jpn N: Ezosugi-tsumehadani)  
Ehara 1962c, p. 158, figs. 1–11. Type loc.: Sapporo, Hokkaido, JAPAN. Type hab.: Japanese cedar, *Cryptomeria japonica* (Jpn N: Sugi. Taxodiaceae).  
Holotype (ZIHU-3406) and 13 paratypes in HUM.
19. ***Tetranychus ezoensis* Ehara, 1962** (Tetranychidae)  
(Jpn N: Araragi-namihadani)  
Ehara 1962c, p. 171, figs. 37–42. Type loc.: Sapporo, Hokkaido, JAPAN. Type hab.: *Taxus cuspidata* (Jpn N: Ichii. Taxaceae).  
Holotype (ZIHU-3407) and 13 paratypes in HUM.
20. *Oligonychus shinkajii* Ehara, 1963 (Tetranychidae)  
Current N: ***Oligonychus modestus* (Banks, 1900)**  
(Jpn N: Ine-tsumehadani)  
Ehara 1963b, p. 228, figs. 1–10. Type loc.: Hiratsuka, Kanagawa Pref., Honshu, JAPAN. Type hab.: corn (Poaceae).  
Holotype (ZIHU-3408) and 14 paratypes in HUM.
21. ***Agistemus summersi* Ehara, 1964** (Stigmaeidae)  
(Jpn N: Ezo-nagahishidani)  
Ehara 1964a, p. 227, figs. 1, 2. Type loc.: Sapporo, Hokkaido, JAPAN. Type hab.: *Sasa* bamboo (Bambusaceae).  
Holotype and allotype missing and 1 paratype in HUM.  
*Notes.* Type specimens of *Agistemus summersi*, *Amblyseius sojaensis* (#24) deposited in the Zoological Institute of the Faculty of Science, Hokkaido University (now Hokkaido University Museum) were on loan to the first author and then housed in the Biological Laboratory of the Faculty of Education, Tottori University, until October 2008. Unfortunately, we (Ohashi, Gotoh, and Tsurusaki) failed to find the type series of these species in the collection stored in the laboratory. It is likely that they were lost inadvertently during a temporal relocation of the bulk of the collection to Ehara's home. Type series was also missing for *Typhlodromus (Paraseiulus) yokogawae* (#117).
22. ***Agistemus lobatus* Ehara, 1964** (Stigmaeidae)  
(Jpn N: Kita-nagahishidani)  
Ehara 1964a, p. 230, figs. 5–7. Type loc.: Kuroishi, Aomori Pref., Honshu, JAPAN. Type hab.: apple (Jpn N: Ringo. Rosaceae).  
Holotype (ZIHU-3409) and 3 paratypes in HUM.
23. *Typhlodromus (Neoseiulus) bambusae* Ehara, 1964  
(Phytoseiidae)  
Current N: ***Typhlodromus (Anthoseius) bambusae* Ehara, 1964**  
(Jpn N: Take-kaburidani)  
Ehara 1964c, p. 379, figs. 1–4. Type loc.: Tottori, Tottori Pref., Honshu, JAPAN. Type hab.: *Chimonobambusa marmorea* Makino (Jpn N: Kanchiku. Bambusaceae).  
Holotype (ZIHU-3410) and 2 paratypes in HUM.
24. *Amblyseius sojaensis* Ehara, 1964 (Phytoseiidae)  
Current N: ***Euseius sojaensis* (Ehara, 1964)**  
(Jpn N: Kôzuke-kaburidani)  
Ehara 1964c, p. 381, figs. 5–8. Type loc.: Sôja, Gumma Pref., Honshu, JAPAN. Type hab.: mulberry (Jpn N: Kuwa. Moraceae).  
Holotype and 1 paratype missing.  
*Notes.* See “Notes” under “*Agistemus summersi*”.
25. *Amblyseius oguroi* Ehara, 1964 (Phytoseiidae)  
Current N: ***Scapulaseius oguroi* (Ehara, 1964)**  
(Jpn N: Kita-kaburidani)  
Ehara 1964c, p. 384, figs. 17–23. Type loc.: Sendai, Miyagi Pref., Honshu, JAPAN. Type hab.: *Mallotus japonicus* (Thunb. ex Murray) Mueller-Arg. (Jpn N: Akamegashiwa. Euphorbiaceae).  
Holotype (ZIHU-3411) and 3 paratypes in HUM.
26. ***Lasioseius sugawarai* Ehara, 1964** (Ascidae)  
(Jpn N: Kazari-mayoidani)  
Ehara 1964c, p. 390, figs. 41–49. Type loc.: Morioka, Iwate Pref., Honshu, JAPAN. Type hab.: strawberry (Rosaceae).  
Holotype (ZIHU-3412) and 2 paratypes in HUM.
27. ***Cheyllostigmaeus multidentatus* Summers & Ehara, 1965** (Stigmaeidae)  
Summers & Ehara 1965, p. 54, figs. 3, 8, 11, 15, 17. Type loc.: Jardin Botánico Nacional, Vine del Mar, CHILE. Type hab.: soil near spring.

Holotype and 1 paratype in USNM and others in UCD, DE.

28. *Cheylostigmaeus californicus* Summers & Ehara, 1965 (Stigmaeidae)

Summers & Ehara 1965, p. 56, figs. 4, 6, 7, 16, 18. Type loc.: Post Pile Camp, Tehama County, California, USA. Type hab.: rotting logs.

Holotype and allotype in UCD, DE and paratypes in USNM.

29. *Heteroteneriffia tokiokai* Ehara, 1965 (Teneriffiidae)

Current N: *Heteroteneriffia marina* Hirst, 1926  
(Jpn N: Iso-yubidani)

Ehara 1965a, p. 222, figs. 1–10. Type loc.: Hatake-zima near Shirahama, Wakayama Pref., Honshu, JAPAN. Type hab.: rock in intertidal zone.

Holotype (ZIHU-3413) and 6 paratypes in HUM.

30. *Neoteneriffiola japonica* Ehara, 1965 (Teneriffiidae)

(Jpn N: Usuge-yubidani)

Ehara 1965a, p. 226, figs. 11–18. Type loc.: Sapporo, Hokkaido, JAPAN. Type hab.: elm bark (Ulmaceae).

Holotype (ZIHU-3414) in HUM.

31. *Lasioseius japonicus* Ehara, 1965 (Ascidae)

(Jpn N: Shibata-mayoidani)

Ehara 1965b, p. 25, figs. 1–13. Type loc.: Niigata, Niigata Pref., Honshu, JAPAN. Type hab.: laboratory culture of the bulb mite, *Rhizoglyphus echinopus*.

Holotype (ZIHU-3415) and 4 paratypes in HUM.

32. *Eotetranychus shii* Ehara, 1965 (Tetranychidae)

Current N: *Schizotetranychus shii* (Ehara, 1965)

(Jpn N: Shiinoki-matahadani)

Ehara 1965c, p. 618, figs. 1–14. Type loc.: Matsuyama, Ehime Pref., Shikoku, JAPAN. Type hab.: *Shiia sieboldii* Makino (= *Castanopsis sieboldii* (Makino) Hatusima ex Yamazaki & Masiba). (Jpn N: Itajii. Fagaceae).

Holotype (ZIHU-3416) and 11 paratypes in HUM.

33. *Eotetranychus celtis* Ehara, 1965 (Tetranychidae)

(Jpn N: Enoki-akehadani)

Ehara 1965c, p. 620, figs. 15–25. Type loc.: Kôchi, Kôchi Pref., Shikoku, JAPAN. Type hab.: *Celtis sinensis* Persoon var. *japonica* Nakai. (Jpn N: Enoki. Ulmaceae).

Holotype (ZIHU-3417) and 9 paratypes in HUM.

34. *Typhlodromus (Neoseiulus) insularis* Ehara, 1966 (Phytoseiidae)

Current N: *Typhlodromus (Anthoseius) insularis* Ehara, 1966

(Jpn N: Seto-kaburidani)

Ehara 1966a, p. 10, figs. 1–6. Type loc.: Takamatsu, Kagawa Pref., Shikoku, JAPAN. Type hab.: *Viburnum* sp. (Jpn N: Gamazumi sp. Caprifoliaceae).

Holotype (ZIHU-3418) and 1 paratype in HUM.

35. *Typhlodromus (Neoseiulus) yasumatsui* Ehara, 1966 (Phytoseiidae)

Current N: *Typhlodromus (Anthoseius) yasumatsui* Ehara, 1966

(Jpn N: Yasumatsu-kaburidani)

Ehara 1966a, p. 11, figs. 7–14. Type loc.: Kôchi, Kôchi Pref., Shikoku, JAPAN. Type hab.: undetermined plant.

Holotype (ZIHU-3419) and 3 paratypes in HUM.

36. *Amblyseius (Amblyseius) kaguya* Ehara, 1966

(Phytoseiidae)

Current N: *Amblyseius (s. str.) kaguya* Ehara, 1966

(Jpn N: Nangoku-kaburidani)

Ehara 1966a, p. 12, figs. 15–19. Type loc.: Kôchi, Kôchi Pref., Shikoku, JAPAN. Type hab.: bamboo (Jpn N: Take-ka. Bambusaceae).

Holotype (ZIHU-3420) and 6 paratypes in HUM.

37. *Phytoseius (Phytoseius) blakistoni* Ehara, 1966

(Phytoseiidae)

Current N: *Phytoseius (Dubininellus) blakistoni* Ehara, 1966

(Jpn N: Tomoe-kaburidani)

Ehara 1966a, p. 14, figs. 20–26. Type loc.: Mt. Hakodate, Hakodate, Hokkaido, JAPAN. Type hab.: *Salix reinii* (Jpn N: Mineyanagi. Salicaceae).

Holotype (ZIHU-3421) and 4 paratypes in HUM.

38. *Phytoseius (Phytoseius) capitatus* Ehara, 1966

(Phytoseiidae)

Current N: *Phytoseius (Dubininellus) capitatus* Ehara, 1966

(Jpn N: Shikoku-kaburidani)

Ehara 1966a, p. 15, figs. 27–32. Type loc.: Matsuyama, Ehime Pref., Shikoku, JAPAN. Type hab.: *Rhus* sp. (Jpn N: Urushi sp. Anacardiaceae).

Holotype (ZIHU-3422) in HUM.

39. *Amblyseius sakagamii* Ehara, 1966 (Phytoseiidae)

Current N: *Euseius sakagamii* (Ehara, 1966)

Ehara 1966b, p. 130, figs. 1–7. Type loc.: Rio Claro, State of São Paulo, BRAZIL. Type hab.: *Dombea natalensis* (Sterculiaceae).

Holotype (ZIHU-3423) and 6 paratypes in HUM.

40. *Amblyseius neotropicus* Ehara, 1966 (Phytoseiidae)

Current N: *Proprioseiopsis neotropicus* (Ehara, 1966)

Ehara 1966b, p. 133, figs. 12–16. Type loc.: Rio Claro, State of São Paulo, BRAZIL. Type hab.: unidentified plant.

Holotype (ZIHU-3424) and 1 paratype in HUM.

41. *Amblyseius akahirai* Ehara, 1966 (Phytoseiidae)

Current N: *Typhlodromips akahirai* (Ehara, 1966)

Ehara 1966b, p. 134, figs. 17–21. Type loc.: Rio Claro, State of São Paulo, BRAZIL. Type hab.: *Sapindus saponaria* L. (Sapindaceae).

Holotype (ZIHU-3425) in HUM.

42. *Phytoseiulus chanti* Ehara, 1966 (Phytoseiidae)

Current N: *Phytoseiulus macropilis* (Banks, 1904)

Ehara 1966b, p. 135, figs. 22–26. Type loc.: Rio Claro, State of São Paulo, BRAZIL. Type hab.: *Sapindus saponaria* L. (Sapindaceae).

Holotype (ZIHU-3426) and 3 paratypes in HUM.

43. *Phytoseius (Pennaseius) mumai* Ehara, 1966

(Phytoseiidae)

Ehara 1966b, p. 137, figs. 27–30. Type loc.: Rio Claro, State of São Paulo, BRAZIL. Type hab.: *Musa sapientium* L. (Musaceae).

Holotype (ZIHU-3427) in HUM.

44. *Eotetranychus asiaticus* Ehara, 1966 (Tetranychidae)

(Jpn N: Kôno-akehadani)

Ehara 1966c, p. 8, figs. 5–13. Type loc.: Tomigusuku, Okinawa Is., Okinawa Pref., JAPAN. Type hab.: *Ficus erecta* Thunb. (Jpn N: Inubiwa. Moraceae).

Holotype (ZIHU-3428) and 9 paratypes in HUM.

45. *Oligonychus tsudomei* Ehara, 1966 (Tetranychidae)

(Jpn N: Ryûkyû-tsumehadani)

Ehara 1966c, p. 11, figs. 14–21. Type loc.: Haneji, Okinawa

Pref., JAPAN. Type hab.: *Pinus luchuensis* Mayr. (Jpn N: Ryûkyû-matsu. Pinaceae).

Holotype (ZIHU-3429) and 8 paratypes in HUM.

46. *Oligonychus uruma* Ehara, 1966 (Tetranychidae)

(Jpn N: Uruma-tsumehadani)

Ehara 1966c, p. 15, figs. 31–39. Type loc.: Tomigusuku, Okinawa Pref., JAPAN. Type hab.: bamboo (Jpn N: Take-ka. Bambusaceae).

Holotype (ZIHU-3430) and 6 paratypes in HUM.

47. *Typhlodromus (Anthoseius) miyarai* Ehara, 1967

(Phytoseiidae)

(Jpn N: Himeyuri-kaburidani)

Ehara 1967a, p. 68, figs. 1–6. Type loc.: Haneji, Okinawa Pref., JAPAN. Type hab.: *Pinus luchuensis* Mayr. (Jpn N: Ryûkyû-matsu. Pinaceae).

Holotype (ZIHU-3431) and 15 paratypes in HUM.

48. *Typhlodromus (Anthoseius) ryukyensis* Ehara, 1967

(Phytoseiidae)

(Jpn N: Ryûkyû-kaburidani)

Ehara 1967a, p. 69, figs. 7–11. Type loc.: Nakijin, Okinawa Pref., JAPAN. Type hab.: citrus (Rutaceae).

Holotype (ZIHU-3432) and 3 paratypes in HUM.

49. *Amblyseius (Amblyseius) okinawanus* Ehara, 1967

(Phytoseiidae)

Current N: *Scapulaseius okinawanus* (Ehara, 1967)

(Jpn N: Okinawa-kaburidani)

Ehara 1967a, p. 72, figs. 17–24. Type loc.: Tomigusuku, Okinawa Pref., JAPAN. Type hab.: *Verbena officinalis* L. (Jpn N: Kumatsuzura. Verbenaceae).

Holotype (ZIHU-3433) and 12 paratypes in HUM.

50. *Amblyseius (Paraphytoseius) urumanus* Ehara, 1967

(Phytoseiidae)

Current N: *Paraphytoseius urumanus* (Ehara, 1967)

(Jpn N: Uruma-kaburidani)

Ehara 1967a, p. 76, figs. 31–35. Type loc.: Tomigusuku, Okinawa Pref., JAPAN. Type hab.: *Ficus erecta* Thunb. (Jpn N: Inubiwa. Moraceae).

Holotype (ZIHU-3434) and 1 paratype in HUM.

51. *Okiseius subtropicus* Ehara, 1967 (Phytoseiidae)

(Jpn N: Shimamori-kaburidani)

Ehara 1967a, p. 77, figs. 36–39. Type loc.: Itoman, Okinawa Pref., JAPAN. Type hab.: *Hibiscus tiliaceus* L. (Jpn N: Ôhamabô or Yama-asa. Malvaceae).  
Holotype (ZIHU-3435) in HUM.  
Notes. Type species of *Okiseius*.

52. *Phytoseius (Pennaseius) ikeharai* Ehara, 1967  
(Phytoseiidae)

Current N: ***Phytoseius (Euryseius) ikeharai* Ehara, 1967**  
(Jpn N: Shurei-kaburidani)

Ehara 1967a, p. 78, figs. 40–43. Type loc.: Tomigusuku, Okinawa Pref., JAPAN. Type hab.: *Ficus erecta* Thunb. (Jpn N: Inubiwa. Moraceae).  
Holotype (ZIHU-3436) in HUM.

53. *Exothorhis okinawana* Ehara, 1967 (Eupalopsellidae)  
(Jpn N: Okinawa-tsutsudani)

Ehara 1967b, p. 322, figs. 1–2. Type loc.: Nakijin, Okinawa Pref., JAPAN. Type hab.: citrus (Rutaceae).  
Holotype (ZIHU-3437) and 1 paratype in HUM.

54. *Agistemus citrinus* Ehara, 1967 (Stigmaeidae)  
(Jpn N: Usu-nagahishidani)

Ehara 1967b, p. 323, figs. 3–6, 8. Type loc.: Itoman, Okinawa Pref., JAPAN. Type hab.: *Hibiscus tiliaceus* L. (Jpn N: Ôhamabô or Yama-asa. Malvaceae).  
Holotype (ZIHU-3438) and 9 paratypes in HUM.

55. *Typhlodromus (Anthoseius) borealis* Ehara, 1967  
(Phytoseiidae)

(Jpn N: Kitami-kaburidani)

Ehara 1967c, p. 213, figs. 1–7. Type loc.: Hamakoshimizu, Prov. Abashiri, Hokkaido, JAPAN. Type hab.: a gall of *Rosa rugosa* Thunb. (Jpn N: Hamanasu. Rosaceae).  
Holotype (ZIHU-3439) in HUM.

56. *Amblyseius (Amblyseius) haimatus* Ehara, 1967  
(Phytoseiidae)

Current N: ***Neoseiulus haimatus* (Ehara, 1967)**  
(Jpn N: Miyama-kaburidani)

Ehara 1967c, p. 214, figs. 8–12. Type loc.: Mt. Muine, Hokkaido, JAPAN. Type hab.: *Pinus pumila* Rgl. (Jpn N: Haimatsu. Pinaceae).  
Holotype (ZIHU-3440) and 3 paratypes in HUM.

57. *Amblyseius (Amblyseius) paraki* Ehara, 1967

(Phytoseiidae)

Current N: ***Typhlodromips paraki* (Ehara, 1967)**  
(Jpn N: Paraki-kaburidani)

Ehara 1967c, p. 216, figs. 16–20. Type loc.: Sapporo, Hokkaido, JAPAN. Type hab.: apple (Jpn N: Ringo. Rosaceae).

Holotype (ZIHU-3441) in HUM.

58. *Amblyseius (Amblyseius) ainu* Ehara, 1967  
(Phytoseiidae)

Current N: ***Typhlodromips ainu* (Ehara, 1967)**  
(Jpn N: Ainu-kaburidani)

Ehara 1967c, p. 218, figs. 21–27. Type loc.: Mombetsu, Prov. Hidaka, Hokkaido, JAPAN. Type hab.: *Cirsium kamtschaticum* Ledeb. (Jpn N: Chishima-azami. Asteraceae).  
Holotype (ZIHU-3442) and 5 paratypes in HUM.

59. *Amblyseius (Amblyseius) morii* Ehara, 1967  
(Phytoseiidae)

Current N: ***Transeius morii* (Ehara, 1967)**  
(Jpn N: Sarobetsu-kaburidani)

Ehara 1967c, p. 219, figs. 28–34. Type loc.: Toyotomi, Sarobetsu wasteland, Prov. Sôya, Hokkaido, JAPAN. Type hab.: *Salix hultenii* Floderus var. *angustifolia* Kitamura (Jpn N: Ezo-no-bakkoyanagi. Salicaceae).  
Holotype (ZIHU-3443) and 3 paratypes in HUM.

60. *Amblyseius (Amblyseius) firmus* Ehara, 1967  
(Phytoseiidae)

Current N: ***Amblyseius (s. str.) firmus* Ehara, 1967**  
(Jpn N: Oni-kaburidani)

Ehara 1967c, p. 222, figs. 40–44. Type loc.: Mombetsu, Prov. Hidaka, Hokkaido, JAPAN. Type hab.: *Magnolia kobus* DC. var. *borealis* Sarg. (Jpn N: Kobushi. Magnoliaceae).  
Holotype (ZIHU-3444) and 1 paratype in HUM.

61. *Amblyseius (Amblyseius) ezoensis* Ehara, 1967  
(Phytoseiidae)

Current N: ***Amblyseius (s. str.) ezoensis* Ehara, 1967**  
(Jpn N: Ezo-kaburidani)

Ehara 1967c, p. 223, figs. 45–49. Type loc.: Mt. Moiwa, Sapporo, Hokkaido, JAPAN. Type hab.: *Heracleum dulce* Fisch. (Jpn N: Ô-hanaudo. Umbelliferae).  
Holotype (ZIHU-3445) and 1 paratype in HUM.

62. *Amblyseius (Kampimodromus) maritimus* Ehara, 1967

(Phytoseiidae)

Current N: ***Okiseius maritimus* (Ehara, 1967)**

(Jpn N: Hamanasu-kaburidani)

Ehara 1967c, p. 224, figs. 50–57. Type loc.: Hamakoshimizu, Prov. Abashiri, Hokkaido, JAPAN. Type hab.: *Rosa rugosa* Thunb. (Jpn N: Hamanasu. Rosaceae).

Holotype (ZIHU-3446) and 13 paratypes in HUM.

63. *Phytoseius* (*Phytoseius*) *kishii* Ehara, 1967 (Phytoseiidae)Current N: ***Phytoseius* (*Dubininellus*) *kishii* Ehara, 1967**

(Jpn N: Hokkai-kaburidani)

Ehara 1967c, p. 228, figs. 64–67. Type loc.: Sapporo, Hokkaido, JAPAN. Type hab.: *Vitis coignetiae* Pulliat. (Jpn N: Yamabudô. Vitaceae).

Holotype (ZIHU-3447) and 1 paratype in HUM.

64. *Phytoseius* (*Phytoseius*) *campestris* Ehara, 1967

(Phytoseiidae)

Current N: ***Phytoseius* (*Dubininellus*) *campestris* Ehara, 1967**

(Jpn N: Sôya-kaburidani)

Ehara 1967c, p. 229, figs. 68–71. Type loc.: Toyotomi, Sarobetsu wasteland, Prov. Sôya, Hokkaido, JAPAN. Type hab.: *Kalopanax pictus* (Thunb.) (Jpn N: Harigiri. Araliaceae).

Holotype (ZIHU-3448) in HUM.

65. *Bryobia japonica* Ehara & Yamada, 1968 (Tetranychidae)Current N: ***Pseudobryobia japonica* (Ehara & Yamada, 1968)**

(Jpn N: Maru-birahadani)

Ehara & Yamada 1968, p. 66, figs. 1–10. Type loc.: Kuroishi, Aomori Pref., Honshu, JAPAN. Type hab.: wild rose (Rosaceae).

Holotype (NSMT Ac-13036) and 1 paratype (Ac-1303637) in NSMT.

66. ***Tetranychopsis borealis* Ehara & Mori, 1969**

(Tetranychidae)

(Jpn N: Oni-hadani)

Ehara & Mori 1969, p. 45, figs. 1–7. Type loc.: Toyotomi, Sarobetsu peatland, Prov. Sôya, Hokkaido, JAPAN. Type hab.: *Rubus chamaemorus* Linnaeus (Jpn N: Horomui-ichigo. Rosaceae).

Holotype (Ac-13038) and 1 paratype (Ac-13039) in NSMT.

67. ***Eotetranychus boreus* Ehara, 1969** (Tetranychidae)

(Jpn N: Anzu-akehadani)

Ehara 1969a, p. 16, figs. 1–17. Type loc.: Sapporo, Hokkaido, JAPAN. Type hab.: apricot, *Prunus armeniaca* (Jpn N: Anzu. Rosaceae).

Holotype (Ac-13040: male) and 9 paratypes (Ac-13041 to 13049: 6 males and 3 females) in NSMT; 9 paratypes (4 males and 6 females from Botanical Garden, Hokkaido Univ., Sapporo, on Anzu, *P. armeniaca*; 4 males from the same locality, on Sumomo, *P. salicina*) in HUM; 9 paratypes (1 male and 14 females from the Botanical Garden, Hokkaido Univ, on *P. salicina*; 4 males and 13 females from Hirosaki, Aomori Pref., Honshu, on *P. armeniaca*) in TRPM.

68. ***Eotetranychus geniculatus* Ehara, 1969** (Tetranychidae)

(Jpn N: Michinoku-akehadani)

Ehara 1969a, p. 19, figs. 30–42. Type loc.: Morioka, Iwate Pref., Honshu, JAPAN. Type hab.: strawberry (Rosaceae).

Holotype (Ac-13050: male) and 6 paratypes (Ac-13051 to 13056: 3 males and 6 females from Morioka; 2 males from Sagae, Yamagata Pref., Honshu) in NSMT; 5 paratypes (1 male and 11 female from Morioka, on strawberry; 2 males from Sagae, Yamagata Pref., on grape, *Vitis vinifera*) in HUM; 5 paratypes (1 male and 7 females from the type locality, on strawberry; 2 males and 5 females from Sagae, Yamagata Pref., on *V. vinifera*) in TRPM.

69. ***Oligonychus kadarsani* Ehara, 1969** (Tetranychidae)

Ehara 1969b, p. 21, figs. 4–6, 15–16. Type loc.: Pasuruan, Java, INDONESIA. Type hab.: sugar cane (Poaceae).

Holotype (Ac-13057: male) and 5 paratypes (Ac-13058 to 13062: 4 males and 7 females) in NSMT; 5 paratypes (4 males and 7 females) in HUM; 3 paratypes (2 males and 8 females) in TRPM.

70. ***Tetranychus taiwanicus* Ehara, 1969** (Tetranychidae)

Ehara 1969c, p. 95, figs. 42–47, 60–62. Type loc.: Fengshan, TAIWAN. Type hab.: *Pandanus odoratissimus* L. (Pandanaeae).

Holotype (Ac-13063: male) and 3 paratypes (Ac-13064 to 13066: 1 male and 3 females) in NSMT; 2 paratypes (1 male and 2 females) in HUM; 1 paratype (1 male) in TRPM.

71. *Amblyseius* (*Amblyseius*) *taiwanicus* Ehara, 1970

(Phytoseiidae)

Current N: ***Neoseiulus taiwanicus* (Ehara, 1970)**



Ehara 1970a, p. 56, figs. 1–8. Type loc.: Fengshan, TAIWAN. Type hab.: pineapple (Ananaceae).

Holotype (Ac-13067: female) and 1 paratype (Ac-13068: male) in NSMT; 1 paratype (2 males and 1 female) in HUM; 1 paratype (1 female) in TRPM.

72. *Iphiseius formosanus* Ehara, 1970 (Phytoseiidae)

Current N: ***Paraamblyseius formosanus* (Ehara, 1970)**

Ehara 1970a, p. 59, figs. 9–18. Type loc.: Kenting, TAIWAN. Type hab.: *Calamus margaritae* Hance (Arecaceae).

Holotype (Ac-13069: female) in NSMT; 4 paratypes (1 allotype male and 3 females) in HUM; 2 paratypes (8 females) in TRPM.

73. *Phytoseius (Phytoseius) huangi* Ehara, 1970  
(Phytoseiidae)

Current N: ***Phytoseius hawaiiensis* Prasad, 1968**

(Jpn N: Hire-kaburidani)

Ehara 1970a, p. 62, figs. 19–22. Type loc.: Fengshan, TAIWAN. Type hab.: *Pithecolobium dulce* Benth (Fabaceae). Holotype (Ac-13070) in NSMT.

74. *Oligonychus rubicundus* Ehara, 1971 (Tetranychidae)  
(Jpn N: Susuki-tsumehadani)

Ehara 1971a, p. 7, figs. 1–8, 11–14. Type loc.: Hirosaki, Aomori Pref., Honshu, JAPAN. Type hab.: *Miscanthus sinensis* Anderss. (Jpn N: Susuki. Poaceae).

Holotype (Ac-13071: male) and 3 paratypes (Ac-13072 to 13074: 2 males and 4 females) in NSMT; 10 paratypes (8 males and 9 females) in HUM; 6 paratypes (4 males and 9 females) in TRPM.

75. *Typhlodromus (Anthoseius) chinensis* Ehara & Lee,  
1971 (Phytoseiidae)

Ehara & Lee 1971, p. 62, figs. 1–7. Type loc.: Shek O, Hong Kong Island, CHINA. Type hab.: *Bauhinia* sp. (Fabaceae).

Holotype (Ac-13075: female) and 1 paratype (Ac-13076: female) in NSMT; 1 paratype (2 females) in HUM; 1 paratype (1 female) in TRPM.

76. *Amblyseius (Amblyseius) siaki* Ehara & Lee, 1971  
(Phytoseiidae)

Current N: ***Typhlodromips asiaticus* (Evans, 1953)**

Ehara & Lee 1971, p. 64, figs. 9–12. Type loc.: Shek Kiu Tau, N. T., Hongkong, CHINA. Type hab.: wild chrysanthemum (Asteraceae).

Holotype (Ac-13077) in NSMT.

77. *Amblyseius (Amblyseius) nicholsi* Ehara & Lee, 1971  
(Phytoseiidae)

Current N: ***Euseius nicholsi* (Ehara & Lee, 1971)**

Ehara & Lee 1971, p. 67, figs. 21–25. Type loc.: Chai Wan, Hong Kong Island, CHINA. Type hab.: a grass.

Holotype (Ac-13078) in NSMT.

78. *Typhlodromus (Anthoseius) kiso* Ehara, 1972  
(Phytoseiidae)

(Jpn N: Kiso-kaburidani)

Ehara 1972a, p. 138, figs. 1–10. Type loc.: Mt. Ontake, Kiso, Nagano Pref., Honshu, JAPAN. Type hab.: *Abies mariesii* Masters. (Jpn N: Aomori-todomatsu. Pinaceae).

Holotype (Ac-13079: female) and 5 paratypes (Ac-13080 to 13084: 2 males and 4 females) in NSMT; 2 paratypes (1 male on Dakekanba, *Betula ermanii*, Betulaceae, and 3 females on *A. mariesii*) in HUM; 2 paratypes (1 male and 1 female on *A. mariesii*) in TRPM.

79. *Typhlodromus (Anthoseius) hirashimai* Ehara, 1972  
(Phytoseiidae)

(Jpn N: Hirashima-kaburidani)

Ehara 1972a, p. 140, figs. 11–18. Type loc.: Mt. Ontake, Kiso, Nagano Pref., Honshu, JAPAN. Type hab.: *Abies mariesii* Masters (Jpn N: Aomori-todomatsu. Pinaceae).

Holotype (Ac-13085: female) and 5 paratypes (Ac-13086 to 13090: 1 male and 5 females) in NSMT; 2 paratypes (2 females) in HUM; 1 paratype (1 female on *Abies veitchii*) in TRPM.

80. *Typhlodromus (Anthoseius) serrulatus* Ehara, 1972  
(Phytoseiidae)

(Jpn N: Fushi-kaburidani)

Ehara 1972a, p. 142, figs. 19–24. Type loc.: Shiroyama, Tokushima City, Tokushima Pref., Shikoku, JAPAN. Type hab.: *Zelkova serrata* (Thunb.) Makino (Jpn N: Keyaki. Ulmaceae).

Holotype (Ac-13091: female) and 3 paratypes (Ac-13092 to 13094: 2 females on *Z. serrata* and 1 female on *Juglans mandshurica*, Juglandaceae) in NSMT; 3 paratypes (2 females from the type locality; 1 female from the Botanical Garden, Hokkaido Univ., Sapporo, Hokkaido, on Onigurumi, *J. mandshurica*) in HUM; 1 paratype (1 female from the type locality on *Z. serrata*) in TRPM.

81. *Typhlodromus (Anthoseius) yamashitai* Ehara, 1972  
(Phytoseiidae)  
(Jpn N: Yamashita-kaburidani)  
Ehara 1972a, p. 143, figs. 25–30. Type loc.: Mt. Ontake, Kiso, Nagano Pref., Honshu, JAPAN. Type hab.: *Betula ermani* Cham. (Jpn N: Dake-kanba. Betulaceae).  
Holotype (Ac-13095: female) and 3 paratypes (Ac-13096 to 13098: 3 females) in NSMT; 2 paratypes (2 females) in HUM; 1 paratype (1 female) in TRPM.
82. *Typhlodromus (Anthoseius) ternatus* Ehara, 1972  
(Phytoseiidae)  
(Jpn N: Usuge-kaburidani)  
Ehara 1972a, p. 145, figs. 31–35. Type loc.: Mt. Ontake, Kiso, Nagano Pref., Honshu, JAPAN. Type hab.: *Abies veitchii* Lindl. (Jpn N: Shirabe or Shirabiso. Pinaceae).  
Holotype (Ac-13099) in NSMT.
83. *Amblyseius (Amblyseius) inabanus* Ehara, 1972  
(Phytoseiidae)  
Current N: *Neoseiulus inabanus* (Ehara, 1972)  
(Jpn N: Inaba-kaburidani)  
Ehara 1972a, p. 146, figs. 36–41. Type loc.: Koyama, Tottori City, Tottori Pref., Honshu, JAPAN. Type hab.: *Phragmites communis* Trin. (Jpn N: Yoshi. Poaceae).  
Holotype (Ac-13100: female) and 1 paratype (Ac-131001: female) in NSMT; 1 paratype (1 female) in TRPM.
84. *Amblyseius (Amblyseius) yanoi* Ehara, 1972  
(Phytoseiidae)  
Current N: *Neoseiulus yanoi* (Ehara, 1972)  
(Jpn N: Yano-kaburidani)  
Ehara 1972a, p. 151, figs. 54–62. Type loc.: Mt. Ontake, Kiso, Nagano Pref., Honshu, JAPAN. Type hab.: *Abies veitchii* Lindl. (Jpn N: Shirabe or Shirabiso. Pinaceae).  
Holotype (Ac-13102: female) and 5 paratypes (Ac-13103 to 13107: 1 male and 4 females on *A. veitchii*; 2 females on *Picea jezoensis*) in NSMT; 2 paratypes (3 females on *A. veitchii*; 2 females on *Abies mariesii*) in HUM; 2 paratypes (3 females on *A. veitchii*) in TRPM.
85. *Amblyseius (Amblyseius) neoparaki* Ehara, 1972  
(Phytoseiidae)  
Current N: *Typhlodromips neoparaki* (Ehara, 1972)  
(Jpn N: Sasa-kaburidani)  
Ehara 1972a, p. 153, figs. 63–69. Type loc.: Shiga Heights,
- Nagano Pref., Honshu, JAPAN. Type hab.: *Sasa kurilensis* (Rupr.) Makino & Shibata (Jpn N: Chishima-zasa. Bambusaceae).  
Holotype (Ac-13108: female) and 1 paratype (Ac-13109: male) in NSMT.
86. *Amblyseius (Amblyseius) makuwa* Ehara, 1972  
(Phytoseiidae)  
Current N: *Neoseiulus makuwa* (Ehara, 1972)  
(Jpn N: Makura-kaburidani)  
Ehara 1972a, p. 154, figs. 70–74. Type loc.: Kita-usa, Usa, Oita Pref., Kyushu, JAPAN. Type hab.: *Cucumis melo* L. var. *makuwa* Makino (Jpn N: Makuwa-uri. Cucurbitaceae).  
Holotype (Ac-13010) in NSMT.
87. *Amblyseius (Amblyseius) ishikawai* Ehara, 1972  
(Phytoseiidae)  
Current N: *Typhlodromips ishikawai* (Ehara, 1972)  
(Jpn N: Ishikawa-kaburidani)  
Ehara 1972a, p. 158, figs. 83–91. Type loc.: Mt. Ontake, Kiso, Nagano Pref., Honshu, JAPAN. Type hab.: *Alnus maximowiczii* Callier. (Jpn N: Miyama-han-no-ki. Betulaceae).  
Holotype (Ac-13111: female) and 5 paratypes (Ac-13112 to 13116: 1 male and 17 females) in NSMT; 5 paratypes (4 males and 7 females) in HUM; 5 paratypes (1 male and 7 females) in TRPM.
88. *Amblyseius (Amblyseius) shiganus* Ehara, 1972  
(Phytoseiidae)  
Current N: *Amblyseius* (s. str.) *shiganus* Ehara, 1972  
(Jpn N: Shiga-kaburidani)  
Ehara 1972a, p. 160, figs. 92–96. Type loc.: Shiga Heights, Nagano Pref., Honshu, JAPAN. Type hab.: *Sasa kurilensis* (Rupr.) Makino & Shibata (Jpn N: Chishima-zasa. Bambusaceae).  
Holotype (Ac-13117) and 1 paratype (Ac-13118) in NSMT.
89. *Amblyseius (Amblyseius) ishizuchiensis* Ehara, 1972  
(Phytoseiidae)  
Current N: *Amblyseius* (s. str.) *ishizuchiensis* Ehara, 1972  
(Jpn N: Ishizuchi-kaburidani)  
Ehara 1972a, p. 162, figs. 97–102. Type loc.: Mt. Kamegamori, Ehime Pref., Shikoku, JAPAN. Type hab.: litter.  
Holotype (Ac-13019) in NSMT.

90. *Amblyseius (Amblyseius) hinoki* Ehara, 1972  
(Phytoseiidae)

Current N: *Neoseiulus hinoki* (Ehara, 1972)  
(Jpn N: Hinoki-kaburidani)

Ehara 1972a, p. 165, figs. 111–115. Type loc.: Mt. Ontake, Kiso, Nagano Pref., Honshu, JAPAN. Type hab.: *Chamaecyparis obtusa* (Sieb. & Zucc.) Endl. (Jpn N: Hinoki. Cupressaceae).  
Holotype (Ac-13120) and 1 paratype (Ac-13121) in NSMT.

91. *Schizotetranychus leguminosus* Ehara, 1973  
(Tetranychidae)

Current N: *Schizotetranychus lespedezae* Begljarov & Mitrofanov, 1973  
(Jpn N: Saya-matahadani)

Ehara 1973a, p. 224, figs. 1–12. Type loc.: Ishikari, Hokkaido, JAPAN. Type hab.: *Maackia amurensis* Rupr. & Maxim. var. *buengeri* (Maxim.) C. K. Schn. (Jpn N: Inu-enju. Fabaceae).

Holotype (Ac-13122: male) and 20 paratypes (Ac-13123 to 13134, 6 males and 17 females from Ishikari on *M. amurensis*; Ac-13135, 1 male from Toyohira, Sapporo, on Enju, *Sophora japonica*; Ac-13136 to 13140, 5 males from Ochiai Spa, Kuroishi, Aomori Pref., on Kuzu, *Pueraria lobata*; Ac-13141 to 13142, 14 females from Mt. Iwaya, Nagasaki Pref., on *P. lobata*) in NSMT; 15 paratypes (2 males from Ishikari, Sapporo, on *M. amurensis*; 1 male and 8 females from Toyohira, Sapporo, on *S. japonica*; 7 males and 6 females from Ochiai Spa, Kuroishi, on *P. lobata*; 2 males from Mt. Iwaya, Nagasaki, on *P. lobata*) in HUM, 8 paratypes (1 male and 10 females from the type locality, *M. amurensis*; 2 males and 5 females from Ochiai Spa, Kuroishi, on *P. lobata*; 3 males from Mt. Iwaya, Nagasaki, on *P. lobata*) in TRPM.

92. *Schizotetranychus cercidiphylli* Ehara, 1973  
(Tetranychidae)

(Jpn N: Katsura-matahadani)

Ehara 1973a, p. 227, figs. 13–24. Type loc.: Sapporo, Hokkaido, JAPAN. Type hab.: *Cercidiphyllum japonicum* Sieb. & Zucc. (Jpn N: Katsura. Cercidiphyllaceae).

Holotype (Ac-13143, male) and 20 paratypes (Ac-13144 to 13159, 13 males and 9 females from Sapporo; Ac-0360 to 13163, 4 males from Kuroishi, Aomori Pref.) in NSMT; 5 paratypes (3 males and 6 females) in HUM; 2 paratypes (1 male and 4 females from Ochiai Spa, Kuroishi City) in

TRPM.

93. *Aponychus siamensis* Ehara & Wongsiri, 1975  
(Tetranychidae)

Ehara & Wongsiri 1975, p. 151, fig. 1. Type loc.: Mt. Doi Chiang Dao, THAILAND. Type hab.: bamboo (Jpn N: Takeka. Bambusaceae).

Holotype (Ac-13064, female mounted with 3 female paratypes) in NSMT.

94. *Aponychus nakaoui* Ehara & Wongsiri, 1975  
(Tetranychidae)

Current N: *Sinotetranychus nakaoui* (Ehara & Wongsiri, 1975)

Ehara & Wongsiri 1975, p. 153, fig. 2. Type loc.: Ban Kad near Chiang Mai, THAILAND. Type hab.: bamboo (Bambusaceae).

Holotype (Ac-13165, female mounted with 2 female paratypes) and 1 paratype (Ac-13166, 1 female) in NSMT.

95. *Eotetranychus suvipakiti* Ehara & Wongsiri, 1975  
(Tetranychidae)

Ehara & Wongsiri 1975, p. 156, figs. 9–18. Type loc.: Chiang Dao, THAILAND. Type hab.: banana (Musaceae).

Holotype (Ac-13167, male) and 15 paratypes (Ac-13168 to 13182, 9 males, 31 females, and 1 nymph) in NSMT; 5 paratypes (2 males and 12 females) in HUM; and 3 paratypes (2 males and 5 females) in TRPM.

96. *Eotetranychus thailandicus* Ehara & Wongsiri, 1975  
(Tetranychidae)

Ehara & Wongsiri 1975, p. 158, figs. 19–27. Type Loc.: Fang, THAILAND. Type hab.: *Ficus* sp. (Moraceae).

Holotype (Ac-13183, male) and 2 paratypes (Ac-13184 to 13185, 8 females) in NSMT; 1 paratype (1 male) in HUM; and 1 paratype (5 females) in TRPM.

97. *Schizotetranychus vermiculatus* Ehara & Wongsiri, 1975 (Tetranychidae)

Ehara & Wongsiri 1975, p. 162, figs. 32–37. Type loc.: Prew, THAILAND. Type hab.: grass.

Holotype (Ac-13186, female) and 3 paratypes (Ac-13187 to 13189, 9 females) in NSMT; 2 paratypes (4 females) in HUM; and 1 paratype (4 females) in TRPM.

98. *Schizotetranychus yoshimekii* Ehara & Wongsiri, 1975

## (Tetranychidae)

Ehara & Wongsiri 1975, p. 167, figs. 54–64. Type loc.: Bangkok, THAILAND. Type hab.: rice (Poaceae).

Holotype (Ac-13190, male) and 2 paratypes (Ac-13191 to 13192, 1 male and 10 females) in NSMT; 1 paratype (1 male) in HUM; and 1 paratype (1 female) in TRPM.

99. *Schizotetranychus bhandhufalcki* Ehara & Wongsiri, 1975 (Tetranychidae)

Ehara & Wongsiri 1975, p. 170, figs. 65–75. Type loc.: Klong Luang, THAILAND. Type hab.: a leguminous tree (Fagaceae).

Holotype (Ac-13193, male) and 3 paratypes (Ac-13194 to 13196, 2 males and 6 females) in NSMT; 1 paratype (1 male) in HUM; and 1 paratype (5 females) in TRPM.

100. *Schizotetranychus chiangmaiensis* Ehara & Wongsiri, 1975 (Tetranychidae)

Ehara & Wongsiri 1975, p. 172, figs. 76–85. Type loc.: Chiang Mai, THAILAND. Type hab.: *Calotropis gigantea* R. Br. (Asclepiadaceae).

Holotype (Ac-13197, male) and 1 paratype (Ac-13198, 7 females) in NSMT; 1 paratype (1 male) in HUM; and 1 paratype (1 male) in TRPM.

101. *Oligonychus yasumatsui* Ehara & Wongsiri, 1975 (Tetranychidae)

Ehara & Wongsiri 1975, p. 174, figs. 86–93. Type loc.: Chiang Mai, THAILAND. Type hab.: *Pinus kesiya* Gard. (Pinaceae).

Holotype (Ac-13199, male) and 6 paratypes (Ac-13200 to 13205, 2 males and 32 females) in NSMT; 5 paratypes (4 males and 7 females) in HUM; and 5 paratypes (3 males and 13 females) in TRPM.

102. *Tuckerella japonica* Ehara, 1975 (Tuckerellidae)  
(Jpn N: Awa-kenagahadani)

Ehara 1975c, p. 4, fig. 1. Type loc.: Shiroyama, Tokushima City, Tokushima Pref., Shikoku, JAPAN. Type hab.: *Aphananthe aspera* (Thunb.) Planch. (Jpn N: Mukunoki. Ulmaceae).

Holotype (Ac-13206, male) and 1 paratype (Ac-13207, female) in NSMT.

103. *Typhlodromus (Anthoseius) thailandicus* Ehara & Bhandhufalck, 1977 (Phytoseiidae)

Ehara & Bhandhufalck 1977, p. 44, figs. 1–5. Type loc.: Fang, THAILAND. Type hab.: persimmon (Ebenaceae).

Holotype (Ac-13208, female mounted with 1 female paratype) and 1 paratype (Ac-13209, 1 female) in NSMT; 1 paratype (1 female) in HUM; and 1 paratype (2 females) in TRPM.

104. *Phytoseius (Phytoseius) neoferox* Ehara & Bhandhufalck, 1977 (Phytoseiidae)

Ehara & Bhandhufalck 1977, p. 49, figs. 22–25. Type loc.: Fang, THAILAND. Type hab.: persimmon (Ebenaceae).

Holotype (Ac-13210) in NSMT.

105. *Amblyseius (Amblyseius) aizawai* Ehara & Bhandhufalck, 1977 (Phytoseiidae)

Current N: *Euseius aizawai* (Ehara & Bhandhufalck, 1977)

Ehara & Bhandhufalck 1977, p. 59, figs. 56–62. Type loc.: Chiang Dao, THAILAND. Type hab.: papaya (Caricaceae).

Holotype (Ac-13211, female mounted with 1 female paratype) and 1 paratype (Ac-13212, 2 females) in NSMT; and 1 paratype (1 male and 1 female) in HUM.

106. *Amblyseius (Amblyseius) okumae* Ehara & Bhandhufalck, 1977 (Phytoseiidae)

Current N: *Euseius okumae* (Ehara & Bhandhufalck, 1977)

Ehara & Bhandhufalck 1977, p. 61, figs. 63–69. Type loc.: Doi Chiang Dao, THAILAND. Type hab.: tea (Theaceae).

Holotype (Ac-13213, female) and 3 paratypes (Ac-13214 to 13216, 1 male and 4 females) in NSMT; 2 paratypes (2 females) in HUM; and 1 paratype (2 females) in TRPM.

107. *Amblyseius (Amblyseius) siamensis* Ehara & Bhandhufalck, 1977 (Phytoseiidae)

Current N: *Typhlodromips siamensis* (Ehara & Bhandhufalck, 1977)

Ehara & Bhandhufalck 1977, p. 63, figs. 70–76. Type loc.: Prew, THAILAND. Type hab.: citrus (Rutaceae).

Holotype (Ac-13217, female) and 2 paratypes (Ac-13218 to 13219, 2 females) in NSMT; 1 paratype (1 female) in HUM; and 1 paratype (1 female) in TRPM.

108. *Amblyseius (Amblyseius) anuwati* Ehara & Bhandhufalck, 1977 (Phytoseiidae)

Current N: *Typhlodromips anuwati* (Ehara &

**Bhandhufalck, 1977)**

Ehara & Bhandhufalck 1977, p. 63, figs. 77–83. Type loc.: Prew, THAILAND. Type hab.: coffee (Rubiaceae). Holotype (Ac-13220, female mounted with 1 female paratype) in NSMT.

109. *Amblyseius (Amblyseius) hidakai* Ehara & Bhandhufalck, 1977 (Phytoseiidae)

Current N: ***Typhlodromips hidakai* (Ehara & Bhandhufalck, 1977)**

Ehara & Bhandhufalck 1977, p. 66, figs. 84–88. Type loc.: Fang, THAILAND. Type hab.: undetermined tree. Holotype (Ac-13221, female) and 1 paratype (Ac-13222, 1 male) in NSMT; and 1 paratype (1 female) in HUM.

110. *Amblyseius (Phytoscutella) wongsirii* Ehara & Bhandhufalck, 1977 (Phytoseiidae)

Current N: ***Phytoscutus wongsirii* (Ehara & Bhandhufalck, 1977)**

Ehara & Bhandhufalck 1977, p. 75, figs. 119–124. Type loc.: Prew, THAILAND. Type hab.: citrus (Rutaceae). Holotype (Ac-13223, female mounted with 1 female paratype) in NSMT.

111. *Amblyseius (Amblyseius) koyamanus* Ehara & Yokogawa, 1977 (Phytoseiidae)

Current N: ***Neoseiulus koyamanus* (Ehara & Yokogawa, 1977)**

(Jpn N: Koyama-kaburidani)

Ehara & Yokogawa 1977, p. 50, figs. 1–8. Type loc.: Koyama, Tottori City, Tottori Pref., Honshu, JAPAN. Type hab.: *Digitaria violascens* (Jpn N: Aki-mehishiba. Poaceae). Holotype (Ac-13224, female) and 3 paratypes (Ac-13225, 1 female on *D. violascens* Ac-13226 to 13227, 2 females on *Zoysia* sp.) in NSMT; 1 paratype (1 female on *Zoysia* sp.) in HUM; and 1 paratype (1 female on *D. violascens*) in TRPM.

112. *Amblyseius (Amblyseius) ochii* Ehara & Yokogawa, 1977 (Phytoseiidae)

Current N: ***Typhlodromips ochii* (Ehara & Yokogawa, 1977)**

(Jpn N: Ochi-kaburidani)

Ehara & Yokogawa 1977, p. 54, figs. 17–24. Type loc.: Mt. Kyûshô-zan, Tottori City, Tottori Pref., Honshu, JAPAN. Type hab.: bamboo (Jpn N: Take-ka sp. Bambusaceae). Holotype (Ac-13228, female) and 5 paratypes (Ac-13229 to

13230, 2 female from Mt. Kyûshô-zan; Ac 13231 to 13233, 4 females from Kawabara-cho, Tottori City) in NSMT; 3 paratypes (3 females from the type locality; 1 female from Wanami, Kawabara, Tottori City, on Yadake, *Pseudosasa japonica*) in HUM; and 1 paratype (1 female from the type locality on *Sasa* sp.) in TRPM.

113. *Typhlodromus (Anthoseius) takahashii* Ehara, 1978 (Phytoseiidae)

Current N: ***Thphlodromus (Anthoseius) bambusae* Ehara, 1964**

(Jpn N: Barato-kaburidani. Current Jpn N: Take-kaburidani) Ehara 1978a, p. 446, figs. 1–7. Type loc.: Barato, Sapporo, Hokkaido, JAPAN. Type hab.: *Sasa senanensis* (Franchet & Savatier) Rehder (Jpn N: Kumai-zasa. Bambusaceae).

Holotype (Ac-13234, female) and 2 paratypes (Ac-13235 to 13236, 6 females) in NSMT; 2 paratypes (2 females) in HUM; and 1 paratype (1 female) in TRPM.

114. *Phytoseius (Pennaseius) tenuiformis* Ehara, 1978 (Phytoseiidae)

Current N: ***Phytoseius (Phytoseius) tenuiformis* Ehara, 1978**

(Jpn N: Hoso-kaburidani)

Ehara 1978a, p. 448, figs. 8–15. Type loc.: Takaoka, Tomakomai, Hokkaido, JAPAN. Type hab.: *Sasa apoiensis* Nakai (Jpn N: Ezo-miyako-zasa. Bambusaceae).

Holotype (Ac-13237, female) and 10 paratypes (Ac-13238 to 13247, 3 males and 15 females) in NSMT; 5 paratypes (6 males, 2 females, and 2 slides unsexed) in HUM; and 5 paratypes (2 males and 4 females) in TRPM.

115. *Panonychus (Sasanychus) akitanus* Ehara, 1978 (Tetranychidae)

Current N: ***Sasanychus akitanus* (Ehara, 1978)**  
(Jpn N: Midori-hadani)

Ehara 1978b, p. 88, figs. 1–11. Type loc.: Nishi-senboku, Akita Pref., Honshu, JAPAN. Type hab.: *Sasa* sp. (Bambusaceae).

Holotype (Ac-13248, male) and 10 paratypes (Ac-13249–13258, 5 males and 14 females) in NSMT; 10 paratypes (7 males and 9 females) in HUM; and 6 paratypes (4 males and 2 females) in TRPM.

Notes. “*Sasanychus*” was created as a subgenus of the genus *Panonychus* in this article designating this species as the type species. Later, the subgenus was elevated to the

generic level by Ehara and Gotoh (1987).

116. *Yezonychus sapporensis* Ehara, 1978 (Tetranychidae)

(Jpn N: Keusu-hadani)

Ehara 1978b, p. 90, figs. 12–23. Type loc.: Hokkaido Univ. Campus, Sapporo, Hokkaido, JAPAN. Type hab.: *Sasa senanensis* (Franchet & Savatier) Rehder (Jpn N: Kumai-zasa. Bambusaceae).

Holotype (Ac-13259, male) and 19 paratypes (Ac-13260 to 13274, 5 males and 16 females from Hokkaido Univ. Campus; Ac-13275 to 13278, 8 female from Kamonosawa, Tomakomai) in NSMT; 10 paratypes (2 males from the type locality; 2 males and 16 females from Kamonosawa, Tomakomai) in HUM; 10 paratypes (5 males and 13 females from the type locality) in TRPM.

*Notes.* This species was described under a new genus, *Yezonychus*.

117. *Typhlodromus (Paraseiulus) yokogawae* Ehara & Hamaoka, 1980 (Phytoseiidae)

Current N: *Kuzinellus yokogawae* (Ehara & Hamaoka, 1980)

(Jpn N: Kebuka-kaburidani)

Ehara & Hamaoka 1980, p. 3, figs. 1–7. Type loc.: Mt. Kyūshō-zan, Tottori City, Tottori Pref., Honshu, JAPAN. Type hab.: bamboo (Jpn N: Take-ka. Bambusaceae).

Holotype missing; 1 paratype (1 female from Entsuji, Tottori City, on *Mizosoba*, *Persicaria thunbergii*, Polygonaceae) in TRPM.

*Notes.* See “Notes” under “*Agistemus summersi*”.

118. *Eurytetranychus japonicus* Ehara, 1980 (Tetranychidae)

Current N: *Eurytetranychoides japonicus* (Ehara, 1980)

(Jpn N: Arakashi-hadani)

Ehara 1980a, p. 202, figs. 1–11. Type loc.: Mashiko, Tochigi Pref., Honshu, JAPAN. Type hab.: *Quercus glauca* Thunb. (Jpn N: Arakashi. Fagaceae).

Holotype (Ac-13279, female) and 5 paratypes (Ac-13280 to 13284, 2 males and 4 females) in NSMT; 3 paratypes (2 males and 1 female) in HUM; 1 paratype (1 male) in TRPM.

119. *Typhlodromus (Anthoseius) shibai* Ehara, 1981

(Phytoseiidae)

(Jpn N: Miso-kaburidani)

Ehara 1981, p. 235, figs. 1–9. Type loc.: Furukawa, Matsuyama, Ehime Pref., Shikoku, JAPAN. Type hab.: outer

surface of aging woody tank in a “miso” factory.

Holotype in BLMSC; 2 paratypes (2 females) in HUM.

120. *Amblyseius (Amblyseius) alpicola* Ehara, 1982

(Phytoseiidae)

Current N: *Typhlodromips alpicola* (Ehara, 1982)

(Jpn N: Takane-kaburidani)

Ehara 1982a, p. 40, figs. 1–9. Type loc.: Shiga Heights, Nagano Pref., Honshu, JAPAN. Type hab.: *Acer ukurunduense* Trautv. & Mey (Jpn: Ogara-bana or Hozaki-kaede. Aceraceae).

Holotype (Ac-13285, female) and 5 paratypes (Ac-13286 to 13288, 1 male and 2 females from Shiga Heights on *A. ukurunduense*; Ac-13289, 1 female from Shiga Heights on *Acer tschonoskii*; Ac-13290, 1 female from San-no-sawa, Mt. Daisen, Tottori Pref., on *Alnus pendula*, Betulaceae) in NSMT; 5 paratypes (2 females from the type locality; 3 females from San-no-sawa, Mt. Daisen, on *Alnus pendula*) in HUM; 3 paratypes (2 females from the type locality, on *Acer ukurunduense*; 1 female from the same locality, on Mine-kaede, *Acer tschonoskii*) in TRPM.

121. *Amblyseius (Indoseiulus) liturivorus* Ehara, 1982

(Phytoseiidae)

Current N: *Gynaeseius liturivorus* (Ehara, 1982)

(Jpn N: Kii-kaburidani)

Ehara 1982a, p. 43, figs. 10–18. Type loc.: Kishigawa (Spelled as “Kisigawa” in the original description. Kishigawa is a town in Kinokawa City (formerly Naka-gun), Wakayama Pref., Honshu, JAPAN. Type hab.: Soy bean (Jpn N: Daizu. Fabaceae).

Holotype (Ac-13291, female mounted with 1 female paratype) and 10 paratypes (Ac-13292 to 13301, 10 females) in NSMT; 3 paratypes (3 females) in HUM; 3 paratypes (3 females) in TRPM.

*Notes.* This species was described as the third species of the subgenus *Indoseiulus*, a replacement suggested for the subgenus “*Indoseius* Ghan & Menon, 1969” a homonym of *Indoseius* Evans 1955).

122. *Aegyptobia arenaria* Ehara, 1982 (Tenuipalpidae)

(Jpn N: Suna-himehadani)

Ehara 1982b, p. 175, figs. 1–2. Type loc.: Tottori Sand Dunes, Tottori Pref., Honshu, JAPAN. Type hab.: *Artemisia capillaris* Thunb. (Jpn N: Kawara-yomogi. Asteraceae).

Holotype (Ac-13302, female) and 5 paratypes (Ac-13303

to 13307, 6 females) in NSMT; 4 paratypes (5 females) in HUM; and 4 paratypes (5 females) in TRPM.

123. *Tenuipalpus boninensis* Ehara, 1982 (Tenuipalpidae)  
(Jpn N: Hanagasa-himehadani)

Ehara 1982b, p. 177, figs. 3–6. Type loc.: Chichi-jima Island, the Bonin Islands, JAPAN. Type hab.: *Morinda boninensis* Ohwi (Jpn N: Munin-hanagasanoki. Rubiaceae).

Holotype (Ac-13308, female) and 5 paratypes (Ac-13309 to 13313, 4 males and 4 females) in NSMT; 5 paratypes (2 males and 7 females) in HUM; 3 paratypes (1 male and 3 females) in TRPM.

124. *Zetzellia javanica* Ehara & Oomen-Kalsbeek, 1983  
(Stigmaeidae)

Ehara & Oomen-Kalsbeek 1983, p. 19, figs. 1–2, 6. Type loc.: Gambung, Java, INDONESIA. Type hab.: tea (Theaceae).

Holotype (R3.GA.16) and 4 paratypes (R3.GA.26 / R3.GA.32 / R3.GA.1 / R3.00.1) in AUW.

125. *Zetzellia rugosa* Ehara & Oomen-Kalsbeek, 1983  
(Stigmaeidae)

Ehara & Oomen-Kalsbeek 1983, p. 22, figs. 3–5. Type loc.: Pasir Sarongge, Java, INDONESIA. Type hab.: tea (Theaceae).

Holotype (R3.PS.1) in AUW.

126. *Agistemus orbicularis* Ehara & Oomen-Kalsbeek,  
1983 (Stigmaeidae)

Ehara & Oomen-Kalsbeek 1983, p. 22, figs. 7, 10–11. Type loc.: Cigaru estate, Java, INDONESIA. Type hab.: tea (Theaceae).

Holotype (R3.CG.1) and 3 paratypes (R3.CG.1, R3.GM.2, R3.R5.3) in AUW.

127. *Agistemus sumatrensis* Ehara & Oomen-Kalsbeek,  
1983 (Stigmaeidae)

Ehara & Oomen-Kalsbeek 1983, p. 24, figs. 8, 12. Type loc.: Toba Sari estate, Sumatra, INDONESIA. Type hab.: tea (Theaceae).

Holotype (R3.TS.2) and 1 paratype (R3.TS.5) in AUW.

128. *Agistemus pieteri* Ehara & Oomen-Kalsbeek, 1983  
(Stigmaeidae)

Ehara & Oomen-Kalsbeek 1983, p. 25, figs. 9, 13. Type loc.:

Gambung, Java, INDONESIA. Type hab.: tea (Theaceae). Holotype (R3.GA.10) and 1 paratype (R3.GA.10) in AUW.

129. *Eryngiopus yasumatsui* Ehara & Wongsiri, 1984  
(Stigmaeidae)

Ehara & Wongsiri 1984, p. 110, figs. 1, 3. Type loc.: San Pa Tong, THAILAND. Type hab.: soy bean (Fabaceae).

Holotype (Ac-13314) in NSMT.

130. *Agistemus thaianus* Ehara & Wongsiri, 1984  
(Stigmaeidae)

Ehara & Wongsiri 1984, p. 112, figs. 2, 4. Type loc.: Fang, THAILAND. Type hab.: *Ficus* sp. (Moraceae).

Holotype (Ac-13315, female mounted with 3 female paratypes) and 3 paratypes (Ac-13316, 1 male) in NSMT; 1 paratype (3 females) in HUM; 1 paratype (1 female) in TRPM.

131. *Agistemus giganteus* Ehara & Wongsiri, 1984  
(Stigmaeidae)

Ehara & Wongsiri 1984, p. 114, figs. 6, 8–9. Type loc.: Ban Kad near Chiang Mai, THAILAND. Type hab.: litchi (Sapindaceae).

Holotype (Ac-13317, female mounted with 1 female paratype) and 12 paratypes (Ac-13318 to 13329, 2 males and 19 females) in NSMT; 11 paratypes (7 males and 15 females) in HUM; 10 paratypes (2 males and 10 females) in TRPM.

132. *Agistemus siamensis* Ehara & Wongsiri, 1984  
(Stigmaeidae)

Ehara & Wongsiri 1984, p. 116, figs. 7, 10–11. Type loc.: Doi Chiang Dao, THAILAND. Type hab.: tea (Theaceae).

Holotype (Ac-13330, female mounted with 1 male paratype) and 1 paratype (Ac-13331, 1 male) in NSMT.

133. *Typhlodromus (Anthoseius) higoensis* Ehara, 1985  
(Phytoseiidae)  
(Jpn N: Higo-kaburidani)

Ehara 1985a, p. 115, figs. 1–6. Type loc.: Kumamoto Univ. Campus, Kurokami-chô, Kumamoto City, Kumamoto Pref., Kyushu, JAPAN. Type hab.: bamboo (Jpn N: Take-ka. Bambusaceae).

Holotype (Ac-13332, female) and 3 paratypes (Ac-13333 to 13335, 3 females) in NSMT; 2 paratypes (2 females) in HUM; 1 paratype (1 female) in TRPM.

134. *Amblyseius (Amblyseius) hirotae* Ehara, 1985  
(Phytoseiidae)

Current N: *Neoseiulus bicaudus* (Wainstein, 1962)  
(Jpn N: Nise-koyama-kaburidani)

Ehara 1985a, p. 119, figs. 15–24. Type loc.: Tottori Sand Dunes, Tottori City, Tottori Pref., Honshu, JAPAN. Type hab.: *Ischaemum antheploroides* (Steud.) Miq. (Jpn N: Ke-kamonohashi. Poaceae).

Holotype (Ac-13336, female) and 10 paratypes (Ac-13337 to 13340, 1 male and 3 females on *I. antheploroides*; Ac-13341, 1 female on Mehishiba, *Digitaria ciliaris*; Ac-13342 to 13346, 5 females on Shinadare-suzumegaya, *Eragrostis curvula*) in NSMT; 7 paratypes (1 male and 7 females on *I. antheploroides*; 1 male and 1 female on *Digitaria ciliaris*) in HUM; 7 paratypes (10 females on *I. antheploroides*; 1 female on *D. ciliaris*) in TRPM.

135. *Agistemus iburiensis* Ehara, 1985 (Stigmaeidae)  
(Jpn N: Ihuri-nagahishidani)

Ehara 1985b, p. 60, figs. 1–3. Type loc.: Takaoka, Tomakomai, Hokkaido, JAPAN. Type hab.: *Sasa apoiensis* Nakai (Jpn N: Ezo-miyako-zasa. Bambusaceae).

Holotype (Ac-13347, female) and 5 paratypes (Ac-13348–13352, 1 male and 4 females) in NSMT; 5 paratypes (1 male and 7 females) in HUM; 2 paratypes (1 male and 4 females) in TRPM.

136. *Sasanychus pusillus* Ehara & Gotoh, 1987  
(Tetranychidae)

(Jpn N: Hime-midori-hadani)

Ehara & Gotoh 1987, p. 377, figs. 1–12. Type loc.: Takaoka, Tomakomai, Hokkaido, JAPAN. Type hab.: *Sasa apoiensis* Nakai (Jpn N: Ezo-miyako-zasa. Bambusaceae).

Holotype (Ac-13353, male) and 10 paratypes (Ac-13354 to 13363, 4 males and 23 females) in NSMT; 10 paratypes (4 males and 16 females) in HUM; 8 paratypes (3 males and 10 females) in TRPM.

*Notes.* “*Sasanychus*” originally described as a subgenus of the genus *Panonychus* in Ehara (1978b) was elevated to the genus in this article wherein this species was described. Type species of the genus is *Sasanychus akitanus* (Ehara, 1978b).

137. *Eotetranychus spectabilis* Ehara, 1987 (Tetranychidae)  
(Jpn N: Hime-kaede-akehadani)

Ehara 1987, p. 624, figs. 1–13. Type loc.: Botanical Garden,

Hokkaido Univ., Sapporo, Hokkaido, JAPAN. Type hab.: *Acer platanoides* L. (Jpn N: Norway-kaede. Aceraceae).

Holotype (Ac-13364, male) and 10 paratypes (Ac-13365 to 13372, 5 males and 10 females from the Botanical Garden, Hokkaido Univ.; Ac-13373 to 13374, 2 males from Sôma-mura, Hirosaki, Aomori Pref., on Itaya-kaede, *Acer mono*) in NSMT; 10 paratypes (5 females from the type locality; 8 males from Sôma-mura, Hirosaki, on *A. mono*) in HUM; 3 paratypes (3 females from the type locality; 1 male and 7 females from Sôma-mura, Hirosaki, *A. mono*) in TRPM.

138. *Eotetranychus dissectus* Ehara, 1987 (Tetranychidae)  
(Jpn N: Ô-kaede-akehadani)

Ehara 1987, p. 627, figs. 14–27. Type loc.: Botanical Garden, Hokkaido Univ., Sapporo, Hokkaido, JAPAN. Type hab.: *Acer mono* Maxim. (Jpn N: Itaya-kaede. Aceraceae).

Holotype (Ac-13375, male) and 10 paratypes (Ac-13376 to 13383, 6 males and 12 females from the type locality; Ac-13384 to 13385, 7 females from Keiteki-no-mori, Hokkaido Univ.) in NSMT, 10 paratypes (4 males and 12 females from the type locality; 13 males from Keiteki-no-mori, Hokkaido Univ.) in HUM; and 4 paratypes (3 females from the type locality; 2 males and 3 females from Keiteki-no-mori, Hokkaido Univ., on *A. mono*) in TRPM.

139. *Schizotetranychus colocasiae* Ehara in Ehara & Tho, 1988 (Tetranychidae)

Ehara & Tho 1988, p. 4, figs. 1–8, 11–14. Type loc.: Kepong, MALAYSIA. Type hab.: *Colocasia* sp. (Araceae).

Holotype (Ac-13386, male) and 10 paratypes (Ac-13387 to 13396, 5 males and 14 females) in NSMT; 5 paratypes (5 males and 5 females) in HUM; 4 paratypes (2 males and 2 females) in TRPM.

140. *Schizotetranychus malayanus* Ehara in Ehara & Tho, 1988 (Tetranychidae)

Ehara & Tho 1988, p. 6, figs. 9–10, 15–18. Type loc.: Campus of Univ. of Malaya, Kuala Lumpur, MALAYSIA. Type hab.: cassava (Euphorbiaceae).

Holotype (Ac-13397) and 1 paratype (Ac-13398) in NSMT.

141. *Schizotetranychus kochummeni* Ehara in Ehara & Tho, 1988 (Tetranychidae)

Ehara & Tho 1988, p. 7, figs. 19–30. Type loc.: Campus of Univ. of Malaya, Kuala Lumpur, MALAYSIA. Type hab.: undetermined bamboo (Bambusaceae).



Holotype (Ac-13399, male) and 10 paratypes (Ac-13400 to 13409, 5 males and 12 females) in NSMT; 5 paratypes (3 males and 2 females) in HUM; 2 paratypes (1 male and 2 females) in TRPM.

142. *Schizotetranychus approximatus* Ehara in Ehara & Tho, 1988 (Tetranychidae)

Ehara & Tho 1988, p. 10, figs. 31–43. Type loc.: Kepong (FRIM), MALAYSIA. Type hab.: *Bambusa vulgaris* (Jpn N: Daisen-chiku. Bambusaceae).

Holotype (Ac-13410, male) and 12 paratypes (Ac-13411 to 13422, 5 males and 20 females) in NSMT; 11 paratypes (3 males and 9 females) in HUM; 10 paratypes (3 males and 8 females) in TRPM.

143. *Schizotetranychus laevidorsatus* Ehara in Ehara & Tho, 1988 (Tetranychidae)

Ehara & Tho 1988, p. 12, figs. 44–54. Type loc.: Kepong (FRIM), MALAYSIA. Type hab.: *Gigantochloa levis* (Bambusaceae).

Holotype (Ac-13423, male) and 10 paratypes (Ac-13424 to 13433, 10 females) in NSMT; 5 paratypes (1 male and 4 females) in HUM; 4 paratypes (5 females) in TRPM.

144. *Schizotetranychus saitoi* Ehara in Ehara & Tho, 1988 (Tetranychidae)

Ehara & Tho 1988, p. 14, figs. 55–66. Type loc.: Kepong (FRIM), MALAYSIA. Type hab.: *Bambusa vulgaris* (Jpn N: Daisen-chiku. Poaceae).

Holotype (Ac-13434, male) and 5 paratypes (Ac-13435 to 13439, 3 males and 7 females) in NSMT, 5 paratypes (2 males and 6 females) in HUM; 5 paratypes (2 males and 4 females) in TRPM.

145. *Tetranychus malaysiensis* Ehara in Ehara & Tho, 1988 (Tetranychidae)

Ehara & Tho 1988, p. 19, figs. 71–80. Type loc.: Campus of Univ. of Malaya, Kuala Lumpur, MALAYSIA. Type hab.: *Argyreia* sp. (Convolvulaceae).

Holotype (Ac-13440, male) and 10 paratypes (Ac-13441 to 13450, 4 males and 11 females) in NSMT; 2 paratypes (1 male and 1 female) in HUM; 2 paratypes (1 male and 2 females) in TRPM.

146. *Tetranychus bambusicola* Ehara in Ehara & Tho, 1988 (Tetranychidae)

Ehara & Tho 1988, p. 21, figs. 81–91. Type loc.: Port Dickson, MALAYSIA. Type hab.: *Bambusa glaucescens* (Bambusaceae).

Holotype (Ac-13451, male) and 6 paratypes (Ac-13452 to 13457, 10 females) in NSMT; 3 paratypes (1 male and 2 females) in HUM; and 1 paratype (1 female) in TRPM.

147. *Hemicheyletia morii* Ehara in Ehara & Abdal Ghani, 1988 (Cheyletidae)

Ehara & Abdal Ghani 1988, p. 237, figs. 1–4. Type loc.: Kepong (FRIM), MALAYSIA. Type hab.: *Ficus maclellandii* (Moraceae).

Holotype (Ac-13458, female) and 3 paratypes (Ac-13459 to 13461, 3 females) in NSMT; 1 paratype (1 female) in HUM.

148. *Schizotetranychus brevisetosus* Ehara, 1989 (Tetranychidae)

(Jpn N: Kashinoki-matahadani)

Ehara 1989a, p. 28, figs. 1–12. Type loc.: Miwa-chô, Kyoto Pref., Honshu, JAPAN. Type hab.: *Quercus glauca* Thunb. (Jpn N: Arakashi. Fagaceae).

Holotype (Ac-13462, male mounted with 1 female paratype) and 5 paratypes (Ac-13463, 1 female from the type locality; Ac-13464 to 13467, 2 males and 3 females from Kochi Pref., Shikoku, on *Quercus* sp.) in NSMT; 5 paratypes (2 females from the type locality; 1 male and 4 females from Kochi Pref., on *Quercus* sp.) in HUM; 3 paratypes (1 male and 4 females from Kochi Pref., on *Quercus* sp.) in TRPM.

149. *Eotetranychus cornicola* Ehara, 1989 (Tetranychidae)

(Jpn N: Mizuki-akehadani)

Ehara 1989a, p. 31, figs. 13–23. Type loc.: Kuriyagawa, Morioka, Iwate Pref., Honshu, JAPAN. Type hab.: *Cornus controversa* Hemsley (Jpn N: Mizuki. Cornaceae).

Holotype (Ac-13468, male) and 5 paratypes (Ac-13469 to 13473, 4 males and 5 females from the Botanical Garden, Hokkaido Univ., Sapporo, Hokkaido) in NSMT; and 3 paratypes (1 male from the type locality; 1 male and 5 females from the Botanical Garden, Hokkaido Univ.) in HUM; 2 paratypes (1 male and 4 females from the Bitanical Garden, Hokkaido Univ.) in TRPM.

150. *Eotetranychus tsugaruensis* Ehara, 1989 (Tetranychidae)

(Jpn N: Nise-katsura-akehadani)

Ehara 1989a, p. 33, figs. 24–35. Type loc.: Ochiai, Kuroishi, Aomori Pref., Honshu, JAPAN. Type hab.: *Cercidiphyllum japonicum* Sieb. & Zucc. (Jpn N: Katsura. Cercidiphyllaceae).

Holotype (Ac-13474, male) and 3 paratypes (Ac-13475-13477, 2 males and 6 females) in NSMT; 2 paratypes (1 male and 6 females) in HUM; 1 paratype (1 male) in TRPM.

151. *Eotetranychus nomurai* Ehara, 1989 (Tetranychidae)  
(Jpn N: Mukunoki-akehadani)

Ehara 1989a, p. 35, figs. 36–46. Type loc.: Matsudo, Chiba Pref., Honshu, JAPAN. Type hab.: *Aphananthe aspera* (Thunb.) Planch (Jpn N: Mukunoki. Ulmaceae).

Holotype (Ac-13478, male) and 6 paratypes (Ac-13479, 1 male from Machida, Ichihara City, Chiba Pref.; Ac-13480 to 13483, 4 males from the type locality; Ac-13484, 6 females from Machida, Ichihara City) in NSMT; 5 paratypes (2 males and 12 females from the type locality; 1 male from Machida, Ichihara City) in HUM; 2 paratypes (1 male and 2 females from the type locality) in TRPM.

152. *Tetranychus quercivorus* Ehara & Gotoh, 1990  
(Tetranychidae)

Current N: *Amphitetranynchus quercivorus* (Ehara & Gotoh, 1990)

(Jpn N: Mizunara-kudahadani)

Ehara & Gotoh 1990, p. 55, figs. 1–10, 15–19. Type loc.: Sapporo, Hokkaido, JAPAN. Type hab.: *Quercus mongolica* Fischer var. *grosseserrata* (Blume) (Jpn N: Mizunara. Fagaceae).

Holotype (Ac-13485, male) and 10 paratypes (Ac-13486 to 13495, 4 males and 15 females) in NSMT; 10 paratypes (5 males and 18 females) in HUM; 10 paratypes (3 males and 24 females) in TRPM.

153. *Typhlodromus (Paraseiulus) deogyuensis* Ryu & Ehara, 1990 (Phytoseiidae)

Current N: *Paraseiulus deogyuensis* (Ryu & Ehara, 1990)

Ryu & Ehara 1990, p. 145, figs. 1–9. Type loc.: Mujuguchondong, Tokyusan, Muju, Chonbuk, KOREA. Type hab.: *Ulmus davidiana* Planch var. *japonica* (Rehd.) Nakai (Jpn N: Harunire. Ulmaceae).

Holotype in CBNU.

154. *Panonychus bambusicola* Ehara & Gotoh, 1991

(Tetranychidae)

(Jpn N: Sasa-maruhadani)

Ehara & Gotoh 1991, p. 9, figs. 1–7, 10–13. Type loc.: Hokkaido Univ. Campus, Sapporo, Hokkaido, JAPAN. Type hab.: *Sasa senanensis* (Franchet & Savatier) Rehder (Jpn N: Kumai-zasa. Bambusaceae).

Holotype (Ac-13496, male) and 5 paratypes (Ac-13497 to 13501, 3 males and 6 females) in NSMT; 7 paratypes (4 males and 6 females) in HUM; 5 paratypes (2 males and 6 females) in TRPM.

155. *Phytoseius (Phytoseius) koreanus* Ryu & Ehara, 1991  
(Phytoseiidae)

Ryu & Ehara 1991, p. 23, figs. 1–8. Type loc.: Mujuguchondong, Mt. Tokyu, Muju, Chonbuk, KOREA. Type hab.: *Ulmus davidiana* Planch var. *japonica* (Rehd.) Nakai (Jpn N: Harunire. Ulmaceae).

Holotype in CBNU.

156. *Panonychus thelytokus* Ehara & Gotoh, 1992

(Tetranychidae)

(Jpn N: Erumu-maruhadani)

Ehara & Gotoh 1992, p. 112, figs. 17–23. Type loc.: Hokkaido Univ. Campus, Sapporo, Hokkaido, JAPAN. Type hab.: *Ulmus japonina* (Rehd.) Sargent (Jpn N: Harunire. Ulmaceae).

Holotype (Ac-13502, female mounted with 3 female paratypes) and 3 paratypes (Ac-13503 to 13505, 3 females) in NSMT; 3 paratypes (10 females) in HUM; and 1 paratype (5 females) in TRPM.

157. *Typhlodromus wonkooi* Ryu & Ehara, 1992

(Phytoseiidae)

Current N: *Typhlodromus (Anthoseius) wonkooi* Ryu & Ehara, 1992

Ryu & Ehara 1992, p. 723, figs. 1–6. Type loc.: Mujuguchondong, Muju, Chonbuk, KOREA. Type hab.: *Abies koreana* (Pinaceae).

Holotype in CBNU.

158. *Phytoseius (Phytoseius) seungtaii* Ryu & Ehara, 1993  
(Phytoseiidae)

Ryu & Ehara 1993, p. 14, figs. 1–10. Type loc.: Kunnam, Yonchon, Kyonggi, KOREA. Type hab.: *Corylus heterophylla* (Jpn N: Ô-hashibami. Betulaceae).

Holotype in CBNU.

159. *Phytoseius (Phytoseius) sonunensis* Ryu & Ehara, 1993 (Phytoseiidae)  
Ryu & Ehara 1993, p. 16, figs. 11–18. Type loc.: Mt. Sonun, Kochang, Chonbuk, KOREA. Type hab.: *Boehmeria spicata* (Jpn N: Ko-akaso. Urticaceae).  
Holotype in CBNU.
160. *Agistemus malayensis* Ehara, 1993 (Stigmaeidae)  
Ehara 1993a, p. 79, figs. 1, 3. Type loc.: Kepong (FRIM), MALAYSIA. Type hab.: *Macaranga tanaria* Muell. Arg. (Euphorbiaceae).  
Holotype (ht: Taxon no. 173) and 1 paratype in FRIM; 3 paratypes (5 females) in HUM.
161. *Agistemus takagii* Ehara, 1993 (Stigmaeidae)  
Ehara 1993a, p. 81, figs. 2, 4. Type loc.: Kepong (FRIM), MALAYSIA. Type hab.: *Bambusa vulgaris* Schrad. (Jpn N: Daisen-chiku. Bambusaceae).  
Holotype (ht: Taxon no. 174) in FRIM.
162. *Amblyseius (Amblyseius) kokufuensis* Ehara & Kato in Ehara, Okada & Kato, 1994 (Phytoseiidae)  
Current N: *Amblyseius (s. str.) kokufuensis* Ehara & Kato in Ehara, Okada & Kato, 1994 (Jpn N: Kokufu-kaburidani)  
Ehara, Okada & Kato 1994, p. 128, figs. 8–15. Type loc.: Kamikihara, Kokufu, Tottori City, Tottori Pref., Honshu, JAPAN. Type hab.: *Phyllostachys* sp. (Jpn N: Madake-zoku sp. Bambusaceae).  
Holotype (Ac-13506, female) and 3 paratypes (Ac-13507 to 13508, 2 females from the type locality; Ac-13509, 1 female from Miyô, Kôfu-cho, Tottori Pref., on *Sasa palmata*) in NSMT; 2 paratypes (1 female from the type locality; 1 female from Tochiyama, Saji, Tottori City, on Chishima-zasa, *Sasa kurilensis*) in HUM; and 1 paratype (1 female from the type locality) in TRPM.
163. *Amblyseius (Amblyseius) neofirmus* Ehara & Okada in Ehara, Okada & Kato, 1994 (Phytoseiidae)  
Current N: *Amblyseius (s. str.) neofirmus* Ehara & Okada in Ehara, Okada & Kato, 1994 (Jpn N: Nise-oni-kaburidani)  
Ehara, Okada & Kato 1994, p. 133, figs. 31–38. Type loc.: Campus of Tottori University, Koyama, Tottori City, Tottori Pref., Honshu, JAPAN. Type hab.: *Zoysia* sp. (Jpn N: Shiba-zoku sp. Poaceae).  
Holotype (Ac-13510, female) and 3 paratypes (Ac-13511 to 13512, 2 females on *Zoysia* sp.; Ac-13513, 1 female, on *Sasa* sp.) in NSMT; and 1 paratype (1 female on *Zoysia* sp.) in HUM; and 1 paratype (1 female on *Zoysia* sp.) in TRPM.
164. *Amblyseiulella amanoi* Ehara in Ehara, Okada & Kato, 1994 (Phytoseiidae)  
(Jpn N: Nanpô-kaburidani)  
Ehara, Okada & Kato 1994, p. 137, figs. 42–48. Type loc.: Ienoko, Tôgane, Chiba Pref., JAPAN. Type hab.: pear (Nijusseiki) *Pyrus pyrifolia* (Burm. fil.) Nakai (Jpn N: Nijusseiki-nashi. Rosaceae).  
Holotype (Ac-13514, female mounted with 4 female paratypes) in NSMT.
165. *Phytoseius (Phytoseius) quercicola* Ehara in Ehara, Okada & Kato, 1994 (Phytoseiidae)  
Current N: *Phytoseius (Dubininellus) quercicola* Ehara in Ehara, Okada & Kato, 1994 (Jpn N: Tateshina-kaburidani)  
Ehara, Okada & Kato 1994, p. 140, figs. 50–58. Type loc.: Tateshina, Nagano Pref., Honshu, JAPAN. Type hab.: *Quercus* sp. (Fagaceae).  
Holotype (Ac-13515, female mounted with 1 female paratype) and 3 paratypes (Ac-13516 to 13518, 2 males and 1 female) in NSMT; 3 paratypes (2 males and 1 female) in HUM; and 1 paratype (1 female) in TRPM.
166. *Phytoseius (Phytoseius) kazusanus* Ehara in Ehara, Okada & Kato, 1994 (Phytoseiidae)  
Current N: *Phytoseius (Dubininellus) kazusanus* Ehara in Ehara, Okada & Kato, 1994 (Jpn N: Kazusa-kaburidani)  
Ehara, Okada & Kato 1994, p. 142, figs. 59–66. Tôgane, Chiba Pref., Honshu, JAPAN. Type hab.: *Phyllostachys bambusoides* Sieb. & Zucc. (Jpn N: Madake. Bambusaceae).  
Holotype (Ac-13519, female) and 3 paratypes (Ac-13520 to 13522, 2 males and 1 female) in NSMT; 1 paratype (1 female) in HUM; and 1 paratype (1 female) in TRPM.
167. *Typhlodromus (Anthoseius) kadonoi* Ehara in Ehara, Okada & Kato, 1994 (Phytoseiidae)  
(Jpn N: Shinshû-kaburidani)  
Ehara, Okada & Kato 1994, p. 149, figs. 75–82. Type loc.: Tateshina, Nagano Pref., Honshu, JAPAN. Type hab.: *Sasa senanensis* (Franchet & Savatier) Rehder var. *senanensis* (Jpn

N: Shinano-zasa or Kumai-zasa. Bambusaceae).

Holotype (Ac-13523, female) and 2 paratypes (Ac-13524 to 13525, 1 male and 1 female) in NSMT; 1 paratype (1 female) in HUM; and 1 paratype (1 female) in TRPM.

168. *Typhlodromus (Anthoseius) silvanus* Ehara & Kishimoto in Ehara, Okada & Kato, 1994 (Phytoseiidae)  
(Jpn N: Chinju-kaburidani)

Ehara, Okada & Kato 1994, p. 153, figs. 87–92. Type loc.: Kurata-hachiman Shrine, Baba, Tottori City, Tottori Pref., Honshu, JAPAN. Type hab.: *Quercus myrsinaefolia* Blume (Jpn N: Shirakashi. Fagaceae).

Holotype (Ac-13526, female) and 2 paratypes (Ac-13527, 1 female from Igaminu Shrine, Tottori City, on Hisakaki, *Eurya japonica*; Ac-13528, 1 female from Wakasa Shrine, Wakasa-cho, Tottori Pref., on Hinoki, *Chamaecyparis obtusa*) in NSMT; 1 paratype (1 female from Wakasa Shrine, on *C. obtusa*) in HUM; and 1 paratype (1 female from Wakasa Shrine, on *C. obtusa*) in TRPM.

169. *Tetranychus okinawanus* Ehara, 1995 (Tetranychidae)  
(Jpn N: Nangoku-namihadani)

Ehara 1995a, p. 229, figs. 1–13. Type loc.: Shuri, Naha, Okinawa Island, Okinawa Pref., JAPAN. Type hab.: *Pueraria lobata* (Willd.) Ohwi (Jpn N: Kudzu. Fabaceae). Holotype (Ac 12938) and 9 paratypes (Ac 12939 to 12947) in NSMT.

*Notes.* This host plant reads as *Pueraria montana* (Lour.) Merr. (Jpn N: Taiwan-kudzu. Fabaceae).

170. *Eurytetranychus koreanus* Ryu & Ehara, 1995  
(Tetranychidae)

Ryu & Ehara 1995, p. 15, figs. 1–13. Type loc.: Chungju, Chungbuk, KOREA. Type hab.: *Hemiptelea davidii* (Hance) Planchon (Ulmaceae).

Holotype and paratypes in CBNU.

171. *Panonychus osmanthi* Ehara & Gotoh, 1996  
(Tetranychidae)

(Jpn N: Mokusei-maruhadani)

Ehara & Gotoh 1996, p. 18, figs. 1–8, 12–23. Type loc.: Ryugasaki, Ibaraki Pref., Honshu, JAPAN. Type hab.: *Osmanthus fragrans* var. *aurantiacus* Makino (Jpn N: Kin-mokusei. Oleaceae).

Holotype (Ac 12948) and 13 paratypes (Ac 12949 to 12961) in NSMT.

172. *Tetranychus pueraricola* Ehara & Gotoh, 1996  
(Tetranychidae)

(Jpn N: Nami-hadani-modoki)

Ehara & Gotoh 1996, p. 21, figs. 36–44, 48–51. Type loc.: Hitachi-Ohta, Ibaraki Pref., Honshu, JAPAN. Type hab.: *Pueraria lobata* (Willdenow) Ohwi (Jpn N: Kudzu. Fabaceae).

Holotype (Ac 12962) and 9 paratypes (Ac 12963 to 12971) in NSMT.

173. *Eotetranychus quercifoliae* Ehara & Gotoh, 1997  
(Tetranychidae)

(Jpn N: Konara-akehadani)

Ehara & Gotoh 1997, p. 219, figs. 1–10, 14–17. Type loc.: Tsukuba, Ibaraki Pref., Honshu, JAPAN. Type hab.: *Quercus serrata* Thunberg (Jpn N: Konara. Fagaceae).

Holotype (Ac-13529) and 13 paratypes (Ac-13530-13542) in NSMT.

174. *Amblyseius (Euseius) inouei* Ehara & Moraes, 1998  
(Phytoseiidae)

Current N: *Euseius inouei* (Ehara & Moraes, 1998)

Ehara & Moraes 1998, p. 59, figs. 1–10. Type loc.: Ruta by pass-3.5 km, Salto, URUGUAY. Type hab.: navel orange (Rutaceae).

Holotype (Ac 12972) and 1 paratype (Ac 12973) in NSMT.

175. *Amblyseius (Proprioiseiopsis) nemotoi* Ehara & Amano, 1998 (Phytoseiidae)

Current N: *Proprioiseiopsis nemotoi* (Ehara & Amano, 1998)

(Jpn N: Saitama-kaburidani)

Ehara & Amano 1998, p. 43, figs. 47–54. Type loc.: Kuki, Saitama Pref., Honshu, JAPAN. Type hab.: pear (Jpn N: Nashi. Rosaceae).

Holotype (Ac 12974) and 2 paratypes (Ac 12975 to 12976) in NSMT.

176. *Typhlodromus (Typhlodromus) pseudopyri* Ehara & Amano, 1998 (Phytoseiidae)

(Jpn N: Nise-pairai-kaburidani)

Ehara & Amano 1998, p. 61, figs. 71–75. Type loc.: Fujimoto, Tsukuba, Ibaraki Pref., Honshu, JAPAN. Type hab.: pear (Jpn N: Nashi. Rosaceae).

Holotype (Ac 12977) in NSMT.

177. *Typhlodromus (Typhlodromus) armiger* Ehara & Amano, 1998 (Phytoseiidae)  
(Jpn N: Tamage-kaburidani)  
Ehara & Amano 1998, p. 62, figs. 76–80. Type loc.: Kuki, Saitama Pref., Honshu, JAPAN. Type hab.: Italian ryegrass (*Lolium multiflorum*) (Jpn N: Itarian-rai-gurasu. Poaceae). Holotype (Ac 12978) and paratype (Ac 12979) in NSMT.
178. *Eotetranychus rubicans* Ehara, 1999 (Tetranychidae)  
(Jpn N: Inushide-akehadani)  
Ehara 1999a, p. 105, figs. 103–114. Type loc.: Midori-ku, Chiba, Chiba Pref., Honshu, JAPAN. Type hab.: *Carpinus tschonoskii* (Jpn N: Inushide. Betulaceae). Holotype (Ac 12980) and 9 paratypes (Ac 12981 to 12989) in NSMT.
179. *Oligonychus gotohi* Ehara, 1999 (Tetranychidae)  
(Jpn N: Bunaka-tsumehadani)  
Ehara 1999a, p. 114, figs. 137, 141–151. Type loc.: Tomiura, Chiba Pref., Honshu, JAPAN. Type hab.: *Pasania edulis* (Jpn N: Mateba-shii. Fagaceae). Holotype (Ac 12990) and 9 paratypes (Ac 12991 to 12998) in NSMT.
180. *Tetranychus parakanzawai* Ehara, 1999 (Tetranychidae)  
(Jpn N: Nise-kanzawa-hadani)  
Ehara 1999a, p. 129, figs. 191, 197–201. Type loc.: Ami, Ibaraki Pref., Honshu, JAPAN. Type hab.: *Pueraria lobata* (Jpn N: Kudzu. Fabaceae). Holotype (Ac 13000) and 4 paratypes (Ac 13001 to 13004) in NSMT.
181. *Oligonychus obliquus* Ehara & Masaki, 2001 (Tetranychidae)  
Ehara and Masaki 2001, p. 251, figs. 1–12. Type loc.: MEXICO. Type hab.: fruit of squash (*Cucurbita* sp.) (Jpn N: Kabocha-zoku sp. Cucurbitaceae). Holotype (Ac 11195) and 4 paratypes (Ac 11196 to 11197, Ac 13005 to 13006) in NSMT.
182. *Amblyseiulella thoi* Ehara, 2002 (Phytoseiidae)  
Ehara 2002a, p. 37, figs. 18–24. Type loc.: Kepong (FRIM), Selangor, MALAYSIA. Type hab.: *Macaranga tanarius* (L.) Muell. Arg. (Euphorbiaceae). Holotype (ht: Taxon no. 175) in FRIM and 2 paratypes (Ac 13007 to 13008) in NSMT.
183. *Platyseiella acuta* Ehara, 2002 (Phytoseiidae)  
Ehara 2002a, p. 40, figs 25–34. Type loc.: Kepong (FRIM), Selangor, MALAYSIA. Type hab.: *Piper aduncum* (Piperaceae). Holotype (ht: Taxon no. 176) and 1 paratype in FRIM; 6 paratypes (Ac 13009 to 13014) in NSMT.
184. *Tetranychus takafujii* Ehara & Ohashi, 2002 (Tetranychidae)  
(Jpn N: Mitsuyubi-namihadani)  
Ehara and Ohashi 2002, p. 19, figs. 1–10, 11A, B. Type loc.: Yodogawa Riverside Park, Fukushima-ku, Osaka City, Osaka Pref., Honshu, JAPAN. Type hab.: *Solanum nigrum* L. (Jpn N: Inu-hôzuki. Solanaceae). Holotype (Ac 11287) and 15 paratypes (Ac 11288–11302) in NSMT.
185. *Amblyseiulella yaeyamana* Ehara & Amano, 2002 (Phytoseiidae)  
(Jpn N: Deiri-kaburidani)  
Ehara and Amano 2002, p. 323, figs. 4–11. Type loc.: Higashi-yashiki, Taketomi Island, Okinawa Pref., JAPAN. Type hab.: *Hibiscus tiliaceus* L. (Jpn N: Ôhamabô or Yama-asa. Malvaceae). Holotype (Ac 11286) in NSMT.
186. *Amblyseius (Amblyseius) sumatrensis* Ehara, 2002 (Phytoseiidae)  
Current N: *Amblyseius (s. str.) sumatrensis* Ehara, 2002  
Ehara 2002b, p. 128, figs. 16–27. Type loc.: Lubuk Mintrum, Sumatra, INDONESIA. Type hab.: *Lansium domesticum* Corrêa (Meliaceae). Holotype (Ac 11475) and 4 paratypes (11476 to 11479) in NSMT.
187. *Tenuipalpus masakii* Ehara & Ueckermann, 2003 (Tenuipalpidae)  
Ehara and Ueckermann 2003, p. 21, figs. 1–4. Type loc.: SOUTH AFRICA. Type hab.: *Nebelia* sp. (Bruniaceae). Holotype and paratype (Acy:03/4) in ARC-PPRI and 2 paratypes (Ac 11627 to 11628) in NSMT.
188. *Oligonychus sumatranus* Ehara, 2004 (Tetranychidae)  
Ehara 2004a, p. 71, figs. 17–27. Type Loc.: Lubuk Mintrum,

Sumatra, INDONESIA. Type hab.: *Pithecellobium dulce* (Roxb.) Benth. (Fabaceae).  
Holotype (Ac 11676) and 4 paratypes (11677 to 11680) in NSMT.

189. *Dolichotetranychus zoysiae* Ehara, 2004

(Tenuipalpidae)

(Jpn N: Shiba-hosohimehadani)

Ehara 2004b, p. 130, figs. 1–6. Type loc.: Onnason, Okinawa Island, Okinawa Pref., JAPAN. Type hab.: *Zoysia tenuifolia* Willd. (Jpn N: Birôdo-shiba. Poaceae).

Holotype (Ac 11806) and 6 paratypes (Ac 11807 to 11812) in NSMT.

190. *Schizotetranychus gilvus* Ehara & Ohashi, 2005

(Tetranychidae)

(Jpn N: Koto-matahadani)

Ehara and Ohashi 2005, p. 2, figs. 1–16. Type loc.: Botanical Garden of Kyoto University, Sakyo-ku, Kyoto, Kyoto Pref., Honshu, JAPAN. Type hab.: *Quercus gilva* Blume (Jpn N: Ichii-gashi. Fagaceae).

Holotype (Ac 11888) and 8 paratypes (Ac 11889 to 11896) in NSMT.

191. *Indoseiulus santosoi* Ehara, 2005 (Phytoseiidae)

Ehara 2005a, p. 36, figs. 21–29. Type loc.: Cianjur, West Java, INDONESIA. Type hab.: a fabaceous climbing plant (Fabaceae).

Holotype (MZB-Acar. 3578) in MZB.

192. *Gymnostigmaeus akaminei* Ehara & Ueckermann, 2006 (Stigmaeidae)

(Jpn N: Shiba-suji-nagahishidani)

Ehara and Ueckermann 2006, p. 31, figs. 1–15, Type loc.: Onna-son, Okinawa Island, Okinawa Pref., JAPAN. Type hab.: *Zoysia tenuifolia* Willd. (Jpn N: Kôrai-shiba. Poaceae).  
Holotype (Ac 12063) and 4 paratypes (Ac 12064 to 12067) in NSMT.

*Notes.* Type species of new genus *Gymnostigmaeus*.

193. *Eotetranychus toyoshimai* Ehara & Gotoh, 2006

(Tetranychidae)

(Jpn N: Hônoki-akehadani)

Ehara and Gotoh 2006, p. 39, figs. 1–11. Type loc.: Shimo-kuriyagawa, Morioka, Iwate Pref., Honshu, JAPAN. Type hab.: *Magnolia hypoleuca* Sieb. & Zucc. (Jpn N: Hônoki.

Magnoliaceae).

Holotype (Ac 11937) and 3 paratypes (Ac 11938 to 11940) in NSMT.

194. *Phytoseius (Phytoseius) malaysianus* Ehara, 2006

(Phytoseiidae)

Ehara 2006a, p. 177, figs. 1–7. Type loc.: near Sungai Pandan waterfall, Pahang, MALAYSIA. Type hab.: undetermined plant.

Holotype (ht: Taxon No.177) in FRIM; 3 paratypes (Ac 12068 to 12070) in NSMT.

195. *Transeius fulvus* Ehara & Toyoshima in Ehara, Toyoshima & Amano, 2006 (Phytoseiidae)

(Jpn N: Iroguro-kaburidani)

Ehara, Toyoshima and Amano 2006, p. 345, figs. 1–8. Type loc.: Shimo-kuriyagawa, Morioka, Iwate Pref., Honshu, JAPAN. Type hab.: *Morus bombycis* Koidz. (Jpn N: Kuwa. Moraceae).

Holotype (Ac 12133) and 5 paratypes (Ac 12134 to 12138) in NSMT.

196. *Typhlodromus (Typhlodromus) moricola* Ehara & Toyoshima in Ehara, Toyoshima & Amano, 2006

(Phytoseiidae)

(Jpn N: Rikuchû-kaburidani)

Ehara, Toyoshima and Amano 2006, p. 348, figs. 9–15. Type loc.: Shimo-kuriyagawa, Morioka, Iwate Pref., Honshu, JAPAN. Type hab.: *Morus bombycis* Koidz. (Jpn N: Kuwa. Moraceae).

Holotype (Ac 12139) in NSMT.

197. *Typhlodromus (Anthoseius) kishimotoi* Ehara & Amano in Ehara, Toyoshima & Amano, 2006

(Phytoseiidae)

(Jpn N: Nokogiri-kaburidani)

Ehara, Toyoshima and Amano 2006, p. 348, figs. 16–25. Type loc.: Kuchinotsu, Shimabara, Nagasaki Pref., Kyushu, JAPAN. Type hab.: *Citrus unshiu* Mar. (Jpn N: Unshûmikan. Rutaceae).

Holotype (Ac 12140) and 1 paratype (Ac 12141) in NSMT.

198. *Oligonychus castaneae* Ehara & Gotoh, 2007

(Tetranychidae)

(Jpn N: Kuri-no-tsumehadani)

Ehara and Gotoh 2007a, p. 15, figs. 1–12. Type loc.:

Wakaguri, Ami, Ibaraki Pref., Honshu, JAPAN. Type hab.: *Castanea crenata* Sieb. & Zucc. (Jpn N: Kuri, Fagaceae). Holotype (Ac 12142) and 6 paratypes (Ac 12143 to 12148) in NSMT.

199. *Oligonychus amiensis* Ehara & Gotoh, 2007

(Tetranychidae)

(Jpn N: Nyogo-tsumehadani)

Ehara and Gotoh 2007a, p. 18, figs. 13–17. Type loc.: Chûô, Ami, Ibaraki Pref., Honshu, JAPAN. Type hab.: *Lithocarpus edulis* (Makino) Nakai. (Jpn N: Mateba-shii, Fagaceae). Holotype (Ac 12149) and 3 paratypes (Ac 12150 to 12152) in NSMT.

200. *Phytoscutus japonicus* Ehara & Kishimoto, 2007

(Phytoseiidae)

(Jpn N: Yokoami-kaburidani)

Ehara and Kishimoto 2007a, p. 111, figs. 1–7. Type loc.: Kawaminami, Miyazaki Pref., Kyushu, JAPAN. Type hab.: *Citrus unshiu* Mar. (Jpn N: Unshû-mikan, Rutaceae). Holotype (Ac 12896) and 2 paratypes (Ac 12897 to 12898) in NSMT.

201. *Oligonychus camelliae* Ehara & Gotoh, 2007

(Tetranychidae)

(Jpn N: Tsubaki-tsumehadani)

Ehara and Gotoh 2007b, p. 52, figs. 1–11. Type loc.: Shinobuyama, Fukushima, Fukushima Pref., Honshu, JAPAN. Type hab.: *Camellia japonica* L. (Jpn N: Tsubaki, Theaceae). Holotype (Ac 12444) and 8 paratypes (Ac 12445 to 12452) in NSMT.

202. *Tetranychus misumaiensis* Ehara & Gotoh, 2007

(Tetranychidae)

(Jpn N: Misumai-namihadani)

Ehara and Gotoh 2007b, p. 55, figs. 25–33. Type loc.: Misumai, Sapporo, Hokkaido, JAPAN. Type hab.: *Apios* sp. (Jpn N: Hodo-imo sp. Fabaceae). Holotype (Ac 12453) and 7 paratypes (Ac 12454 to 12460) in NSMT.

203. *Eotetranychus tiliaecola* Ehara & Gotoh, 2008

(Tetranychidae)

(Jpn N: Usinose-akehadani)

Ehara and Gotoh 2008a, p. 190, figs. 1–11. Type loc.:

Naganuma, Prov. Sorachi, Hokkaido, JAPAN. Type hab.: *Tilia maximowicziana* (Jpn N: Ôba-bodaiju. Tiliaceae). Holotype (Ac 12930) and 7 paratypes (Ac 12931 to 12937) in NSMT; 6 paratypes in KUM.

204. *Tetranychus huhhotensis* Ehara, Gotoh & Hong,

2008 (Tetranychidae)

Ehara, Gotoh and Hong 2008, p. 339, figs. 1–11, 23. Type loc.: Tuheidate, Huhhot, Inner Mongolia, CHINA. Type hab.: corn (Poaceae).

Holotype (NJAU tetra 2008-001-01) and 5 paratypes (NJAU tetra 2008-001-02 to 2008-001-06) in NJAU; and 5 paratypes (Ac 12899 to 12903) in NSMT.

205. *Tetranychus zae* Ehara, Gotoh & Hong, 2008

(Tetranychidae)

Ehara, Gotoh and Hong 2008, p. 343, figs. 12–22, 24. Type loc.: Tuzuoqitaosihao, Huhhot, Inner Mongolia, CHINA. Type hab.: corn (Poaceae).

Holotype (NJAU tetra 2008-002-01) and 7 paratypes (NJAU tetra 2008-002-02 to 2008-002-08) in NJAU; and 7 paratypes (Ac 12904 to 12910) in NSMT.

**Taxa Other Than Species Created or Newly Named by S. Ehara and his Coauthors**

**Genus *Okiseius* Ehara, 1967** (Phytoseiidae)

Ehara 1967a, p. 77.

Type species: *Okiseius subtropicus* Ehara, 1967.

**Genus *Sasanychus* Ehara, 1978** (Tetranychidae)

Ehara 1978b, p. 88; Ehara and Gotoh 1987, p. 375.

Type species: *Panonychus (Sasanychus) akitanus* Ehara, 1978.

*Notes.* “*Sasanychus*” was created originally as a subgenus of the genus *Panonychus* Yokoyama in Ehara (1978) designating *Panonychus (Sasanychus) akitanus* Ehara, 1978 as the type species. Later, the subgenus was elevated to the generic level by Ehara and Gotoh (1987).

**Genus *Yezonychus* Ehara, 1978** (Tetranychidae)

Ehara 1978b, p. 90.

Type species: *Yezonychus sapporensis* Ehara, 1978.

**Genus *Gymnostigmaeus* Ehara & Ueckermann, 2006**

(Stigmaeidae)

Ehara and Ueckermann 2006, p. 30.

Type species: *Gymnostigmaeus akaminei* Ehara & Ueckermann, 2006.

**Subgenus *Indoseiulus* Ehara** (of Genus *Amblyseius*,  
Phytoseiidae)

Ehara 1982a, p. 42.

Type species: *Indoseius ricini* Ghai and Menon, 1969 (nec *Indoseius* Evans, 1955).

*Notes.* This subgeneric name *Indoseiulus* was newly proposed as a replacement name for “*Indoseius* Ghai & Menon, 1969” (a genus in the original article; nec *Indoseius* Evans, 1955) in the same article, because the name was preoccupied by “*Indoseius* Evans, 1955”.

**Tribe Indoseiulini Ehara and Amano, 1998**

Ehara and Amano 1998, p. 48.

Type genus: *Indoseiulus* Ehara, 1982.

**Acknowledgements**

We are obliged to Mr. Kiyoto Mita, Director of the Tottori Prefectural Museum, and Drs. Yasushi Kawakami, Kei Ichisawa, and Tomotsugu Arikawa of Tottori Prefectural Museum for their help in editing and publishing the paper. We are also grateful to Dr. Edward A. Ueckermann (ARC-PPRI, Pretoria, South Africa) who reviewed the MS. Thanks are also due to Drs. Hirotsugu Ono (the National Science Museum, Tokyo), Masahiro Ôhara (Hokkaido University Museum), Hiroshi Kajihara and Haruo Katakura (Hokkaido University), and Gen Takaku (Hokkaido University of Education), for their help in the assignment of the specimen numbers to the type specimens; and to Minoru Shiba, Professor Emeritus of Matsuyama Shinonome Junior College for checking names of prostigmatid mites other than Tetranychidae. Ohashi, Gotoh, and Tsurusaki also thank Dr. Hiroaki Ehara (Kurashiki City College) for various help extended to them during the preparation of the manuscript and for the photograph of his father Dr. Shôzô Ehara.

**Chronological Bibliography of the Publications of Dr.  
Shôzô Ehara**

This bibliography lists all known scientific publications of Dr. Shôzô Ehara excluding several miscellaneous writings

such as several book reviews or obituaries. As a rule, publications are chronologically arranged also publications of the same year. Those articles published in Japanese are indicated by the English translation followed by the Japanese version in square brackets. Journal names are shown in full only when the journal appeared for the first time in the list.

Newly described taxa are shown also in square brackets (and in bold unless the name was replaced by another senior synonym later) in the titles of the literature concerned omitting author's names.

1. Ehara, S. (1951a) Histological structures of male gonads of some cerambycid-beetles, with remarks on their systematic relationships. *Journal of the Faculty of Science, Hokkaido University, Series 6, Zoology*, 10: 266–270. pl. 12.
2. Ehara, S. (1951b) Famous locations for collecting insects near Sapporo: Jôzan-kei Valley. *Shin-Kontyû*, 4(6): 34. [江原昭三 “札幌近郊の名採集地, 定山溪” 新昆虫]
3. Ehara, S. (1952) Comparative anatomy of the genitalia and the internal reproductive organs of lady-beetles belonging to *Epilachna* (Systematic studies of Coccinellidae, I). *J. Fac. Sci. Hokkaido Univ., Ser. 6, Zool.*, 11: 21–33.
4. Ehara, S. (1953) A comparative study of spermatheca in some local populations in *Epilachna pustulosa* and *E. vigintioctomaculata* (Systematic studies of Coccinellidae, II). *J. Fac. Sci. Hokkaido Univ., Ser. 6, Zool.*, 11: 401–409.
5. Uchida, T. and Ehara, S. (1953) Effects of a dipterous parasite upon the grasshopper, *Oxya yezoensis* Shiraki. *J. Fac. Sci. Hokkaido Univ., Ser. 6, Zool.*, 11: 169–174.
6. Ehara, S. (1954a) Two new spider mites parasitic on Japanese conifers. *Annotationes Zoologicae Japonenses*, 27: 102–106. [***Paratetranychus hondoensis***, ***Paratetranychus inouei***]
7. Ehara, S. (1954b) Comparative anatomy of male genitalia in some cerambycid beetles. *J. Fac. Sci. Hokkaido Univ., Ser. 6, Zool.*, 12: 61–115.
8. Ehara, S. (1954c) On spider mites infesting young conifers. *Forest Pests News*, No. 31, pp. 353–356. [江原昭三 “苗畑のハダニについて” 森林防疫ニュース]
9. Ehara, S. (1955a) On two spider mites parasitic on Japanese citrus. *Annot. Zool. Japon.*, 28: 178–182. [***Eotetranychus kankitus***]
10. Ehara, S. (1955b) Diseases of *Apis mellifera* caused by mites. *Gekkan Mitsubachi*, 8(3): 10–13. [江原昭三 “ミツバチのダニ病” 月刊ミツバチ]
11. Ehara, S. (1955c) Current problems in the genus *Epilachna*. *Shin-Kontyû*, 8(2): 2–9. [江原昭三 “マダラテントウ属をめぐる諸



- 問題”新昆虫]
12. Ehara, S. (1956a) Some spider mites from northern Japan. *J. Fac. Sci. Hokkaido Univ., Ser. 6, Zool.*, 12: 244–258. [*Paratetranychus karamatus*]
  13. Ehara, S. (1956b) A comparative histology of male gonads in some cerambycid beetles with notes on the chromosomes. *J. Fac. Sci. Hokkaido Univ., Ser. 6, Zool.*, 12: 309–316. pl. 9.
  14. Ehara, S. (1956c) Notes on some tetranychid mites of Japan. *Japanese Journal of Applied Zoology*, 21: 139–147. [*Eotetranychus uchidai*]
  15. Ehara, S. (1956d) Two false spider mites from Japanese orchards (Phytoptipalpidae). *Annot. Zool. Japon.*, 29: 234–238.
  16. Ehara, S. (1956e) Tetranychoid mites of mulberry in Japan. *J. Fac. Sci. Hokkaido Univ., Ser. 6, Zool.*, 12: 499–510. [*Tetranychus truncatus*]
  17. Ehara, S. (1956f) Notes on spider mites infesting young forest trees. *Forest Pests News*, 5: 220–224. [江原昭三“森林有害ハダニ類雑記”森林防疫ニュース]
  18. Ehara, S. (1957a) On three spider mites of *Schizotetranychus* from Japan. *J. Fac. Sci. Hokkaido Univ., Ser. 6, Zool.*, 13: 15–23. [*Schizotetranychus recki*]
  19. Ehara, S. (1957b) *Panonychus citri* and *P. ulmi*. *Nôyaku-Tsûshin*, No. 29, 4–7. [江原昭三“ミカンハダニとリンゴハダニ”農薬通信]
  20. Ehara, S. (1957c) Taxonomic notes on plant mites. *Plant Protection*, 11: 469–472. [江原昭三“ダニの形態と分類. 植物寄生ダニを中心として”植物防疫]
  21. Ehara, S. (1958a) Three predatory mites of the genus *Typhlodromus* from Japan (Phytoseiidae). *Annot. Zool. Japon.*, 31: 53–57. [*Typhlodromus japonicus*]
  22. Ehara, S. (1958b) *Oligonychus hondoensis* and its control. *Ringyô-Shin-chishiki*, No. 58, 6–7. [江原昭三“スギノハダニとその防除”林業新知識]
  23. Ehara, S. (1958c) Japanese spider mites and its identification tips (1). *Nôyaku-Tsûshin*, No. 38, 1–4. [江原昭三“日本産ハダニ類とその見分け方(1)”農薬通信]
  24. Ehara, S. (1959a) Description of a new spider mite attacking Japanese pines. *Annot. Zool. Japon.*, 32: 97–100. [*Paratetranychus clavatus*]
  25. Ehara, S. (1959b) Some predatory mites of the genera *Typhlodromus* and *Amblyseius* from Japan (Phytoseiidae). *Acarologia*, 1: 285–295. [*Typhlodromus vulgaris*, *Amblyseius tsugawai*, *Amblyseius orientalis*]
  26. Ehara, S. (1959c) Mites of the subfamily Bryobiinae from Japan (Tetranychidae). *J. Fac. Sci. Hokkaido Univ., Ser. 6, Zool.*, 14: 185–195.
  27. Ehara, S. (1959d) Japanese spider mites and its identification tips (2). *Nôyaku-Tsûshin*, No. 39, 1–4. [江原昭三“日本産ハダニ類とその見分け方(2)”農薬通信]
  28. Ehara, S. (1959e) Japanese spider mites and its identification tips (3). *Nôyaku-Tsûshin*, No. 41, 6–9. [江原昭三“日本産ハダニ類とその見分け方(3)”農薬通信]
  29. Ehara, S. (1959f) Japanese spider mites and its identification tips (4). *Nôyaku-Tsûshin*, No. 42, 5–7. [江原昭三“日本産ハダニ類とその見分け方(4)”農薬通信]
  30. Ehara, S. (1959g) Japanese spider mites and its identification tips (5). *Nôyaku-Tsûshin*, No. 43, 19–21. [江原昭三“日本産ハダニ類とその見分け方(5)”農薬通信]
  31. Ehara, S. (1959h) Spider mites on forest trees. *Hoppô Ringyô*, No. 120, 90–94. [江原昭三“林木を害するハダニの種類”北方林業]
  32. Ehara, S. (1959i) Experimental techniques of spider mites. pp. 469–489. In: Fukaya, M., Ishii, S. and Yamasaki, T. (eds.) *Laboratory Guide for Applied Entomologists*. Japan Plant Protection Association, Tokyo, 858 pp. [江原昭三“ハダニ実験法” In: 深谷昌次・石井象二郎・山崎輝男(編) 昆虫実験法. 日本植物防疫協会(東京)]
  33. Ehara, S. and Moriya, K. (1959) Occurrence of Phasmatodea in Hokkaido. *Kontyû*, 27: 170–171. [江原昭三・森谷清樹“ナナフシ北海道に産す”昆虫]
  34. Ehara, S. (1960a) On some Japanese tetranychid mites of economic importance. *Japanese Journal of Applied Entomology and Zoology*, 4: 234–241. [*Tetranychus phaseus*]
  35. Ehara, S. (1960b) Comparative studies on the internal anatomy of three Japanese trombidiform acarids. *J. Fac. Sci. Hokkaido Univ., Ser. 6, Zool.*, 14: 410–434. pl. 7.
  36. Ehara, S. (1960c) Japanese spider mites and its identification tips (6). *Nôyaku-Tsûshin*, No. 44, 7–9. [江原昭三“日本産ハダニ類とその見分け方(6)”農薬通信]
  37. Ehara, S. (1960d) On new pest, *Paratetranychus clavatus* Ehara on conifer. *Forest Pests News*, 9: 28–29. [江原昭三“新害虫マツヤドリダニについて”森林防疫ニュース]
  38. Ehara, S. (1960e) Acari (*Tarsonemus floricolus*, *Penthaeus major*, *Neomolgus littoralis*, *Tetranychus urticae*, *Tyrophagus dimidiatus*, *Rhizoglyphus echinopus*). p. 9, plate 4. In: Okada, Y.-K. and Uchida, T. (eds.) *Encyclopaedia Zoologica Illustrated in Colours. IV*. Hokuryû-kan, Tokyo. 246 pp. + 123 plates. [江原昭三“ホコリダニ, ムギダニ, イソテングダニ, ナミハダニ, ケナガコナダニ, ネダニ” In: 岡田 要・内田 亨(編) 原色動物大図鑑 IV. 北隆館(東京)]
  39. Ehara, S. (1960f) A guide to natural enemies of spider mites. *Nôyaku-Tsûshin*, 45: 1–7. [江原昭三“ハダニの天敵の種類と

- その見分け方” 農薬通信]
40. Ehara, S. (1960g) Classification, identification and control of spider mites. *Kaju-Saibai-Gijutsu-no-Mondaiten (Problems in Cultivation Techniques of Fruit Trees (Kanesho))*, 4-7. [江原昭三 “ハダニの分類同定と防除” 果樹栽培技術の問題点 (兼商発行)]
41. Ehara, S. (1961a) On some Japanese mesostigmatid mites (Phytoseiidae and Aceosejidae). *Annot. Zool. Japon.*, 34: 95-98.
42. Ehara, S. (1961b) Some snout mite from Japan (Acarina: Bdellidae). *Publication of the Seto Marine Biological Laboratory*, 9: 247-263. [*Bdella uchidai*, *Thoribdella japonica*]
43. Uchida, T. and Ehara, S. (1961) Echinodermata: Holothuroidea (p. 446-447), *Hemicentrotus pulcherrimus* (p. 547), *Asterias amurensis* (p. 571-572), *Anthocidaris crassispina* (p. 679). In: Oshima, M. (ed.) *A Cyclopedia of Applied Zoology*. Hokuryû-kan, Tokyo, 781 pp. [内田 亨・江原昭三 “ナマコ, ハファンウニ, ヒトデ, ムラサキウニ” In: 大島正満 (編) 応用動物事典. 北隆館 (東京)]
44. Ehara, S. (1962a) Notes on some predatory mites (Phytoseiidae and Stigmaeidae). *Jpn. J. Appl. Entomol. Zool.*, 6: 53-60. [*Phytoseius (Dubininellus) nipponicus*]
45. Ehara, S. (1962b) Mites of greenhouse plants in Hokkaido, with a new species of Cheyletidae. *Annot. Zool. Japon.*, 35: 106-111. [*Paracheyletia bakeri*]
46. Ehara, S. (1962c) Tetranychoid mites of conifers in Hokkaido. *J. Fac. Sci. Hokkaido Univ., Ser. 6, Zool.*, 15: 157-175. [*Oligonychus pustulosus*, *Tetranychus ezoensis*]
47. Ehara, S. (1962d) Nematoda (except for Embryology). pp. 90-118, 141-191. In: Uchida, T. (ed.) *Systematic Zoology 4*. Nakayama-Shoten Co., Ltd., Tokyo, 287 pp. [江原昭三 “線虫類 (発生以外)” In: 内田 亨 (編) 動物系統分類学 4. 中山書店 (東京)]
48. Ehara, S. (1962e) Closely related species of spider mites on fruit trees. *Engei-Gijutsu-Kondankai-Nenpô* 1962, pp. 80-84. [江原昭三 “果樹につく近縁なハダニとその生態” 園芸技術懇談会年報昭和 37 年版]
49. Ehara, S. and Miyashita, T. (1962) Spider mite from rice (Acarina: Tetranychidae). *Plant Protection*, 16: 55-56. [江原昭三・宮下忠博 “イネを加害するハダニの存在” 植物防疫]
50. Ehara, S. (1963a) Notes on spider mites in the collection of the Zoological Survey of India, Culcutta (Acarina: Tetranychidae). *Records of the Indian Museum*, 59: 143-148.
51. Ehara, S. (1963b) A new mite of *Oligonychus* from rice, with notes on some Japanese spider mites (Acarina: Tetranychidae). *Jpn. J. Appl. Entomol. Zool.*, 7: 228-231. [*Oligonychus shinkajii*]
52. Ehara, S. (1963c) Knowledge on Acari (1). *Nôyaku-jidai*, No. 53, 23-28. [江原昭三 “ダニの知識 (1)” 農薬時代]
53. Ehara, S. (1963d) Knowledge on Acari (2). *Nôyaku-jidai*, No. 54, 8-13. [江原昭三 “ダニの知識 (2)” 農薬時代]
54. Ehara, S. (1963e) Knowledge on Acari (3). *Nôyaku-jidai*, No. 55, 13-18. [江原昭三 “ダニの知識 (3)” 農薬時代]
55. Ehara, S. (1963f) Knowledge on Acari (4). *Nôyaku-jidai*, No. 56, 12-17. [江原昭三 “ダニの知識 (4)” 農薬時代]
56. Ehara, S. (1963g) Knowledge on Acari (5). *Nôyaku-jidai*, No. 57, 13-18. [江原昭三 “ダニの知識 (5)” 農薬時代]
57. Ehara, S. (1963h) Knowledge on Acari (6). *Nôyaku-jidai*, No. 58, 12-17. [江原昭三 “ダニの知識 (6)” 農薬時代]
58. Ehara, S. (1963i) Mites that harm rearing of experimental animals. *Seibutsu-Kyôzai-no-Kaitaku*, No. 3, pp. 30-36. [江原昭三 “実験動物の飼育を害するダニについて” 生物教材の開拓]
59. Ehara, S. (1964a) Predaceous mites of the genus *Agistemus* in Japan (Acarina: Stigmaeidae). *Annot. Zool. Japon.*, 37: 226-232. [*Agistemus summersi*, *Agistemus lobatus*]
60. Ehara, S. (1964b) The tetranychoid mites of Japan. *Acarologia*, 6: 409-414.
61. Ehara, S. (1964c) Some mites of the families Phytoseiidae and Blattisocidae from Japan (Acarina: Mesostigmata). *J. Fac. Sci. Hokkaido Univ., Ser. 6, Zool.*, 15: 378-394. [*Typhlodromus (Neoseiulus) bambusae*, *Amblyseius sojaensis*, *Amblyseius oguroi*, *Lasioseius sugawarai*]
62. Ehara, S., Takahashi, H., Homma, T., Yamashita, Y. and Sakagami, Sh. F. (1964) Spring activities of a Japanese black swallowtail, *Papilio maackii tutanus* Fenton at a flyaway. *Japanese Journal of Ecology*, 14: 175-181.
63. Ehara, S. (1964d) Experience report on Acarology in United States of America. *Nôyaku-Jidai*, No. 60, 10-15. [江原昭三 “アメリカにおけるダニ学見聞および研究記” 農薬時代]
64. Ehara, S. (1964e) Report of the 1st International Congress of Acarology. *Plant Protection*, 18: 155-156. [江原昭三 “第 1 回ダニ学会議に出席して” 植物防疫]
65. Ehara, S. (1964f) A guide to the spider mites and the false spider mites on conifers. *Forest Pests News*, 13: 160-164. [江原昭三 “針葉樹に寄生するハダニの種類とその識別” 森林防疫ニュース]
66. Ehara, S. (1964g) Species and identification of spider mites parasitic on fruit trees. pp. 85-95. In: Kajiura, M. (ed.) *Dr. Jiro Fukuda's Research Compilations of Pests on Fruit Trees*. Yôkendô Publ., Tokyo. 295 pp. [江原昭三 “果樹に寄生するハダニの種類と同定” In: 梶浦 実 (編) 福田仁郎博士果樹害虫研究集録. 養賢堂]
67. Ehara, S. (1964h) Species of mites on agricultural products in Japan. *Kongetsu-no-Nôyaku*, 8(12): 14-16. [江原昭三 “日本に

- おける農作物のダニの種類” 今月の農薬]
68. Ehara, S. and Nomura, K. (1964) Notes on *Steneotarsonemus pallidus* Banks (Acarina: Tarsonemidae). *Plant Protection*, 18: 129–132. [江原昭三・野村健一“シクラメンホコリダニについて” 植物防疫]
69. Summers, F. M. and Ehara, S. (1965) Reevaluation of the taxonomic characters in four species of the genus *Cheylostigmaeus* (Acarina: Stigmaeidae). *Acarologia*, 7: 49–62. [*Cheylostigmaeus multidentatus*, *Cheylostigmaeus californicus*]
70. Ehara, S. (1965a) Two new species of Tenuipalpidae from Japan, with notes on the genera *Heteroteneriffia* and *Neoteneriffiola* (Acarina: Prostigmata). *Publ. Seto Mar. Biol. Lab.*, 13: 221–229. [*Heteroteneriffia tokiokai*, *Neoteneriffiola japonica*]
71. Ehara, S. (1965b) A new species of *Lasioseius* Berlese (Acarina: Blattisociidae) from mite culture. *Acta Arachnologica*, 19: 25–27, pl. 5. [*Lasioseius japonicus*]
72. Ehara, S. (1965c) Two new species of *Eotetranychus* from Shikoku, with notes on *E. kankitus* Ehara (Acarina: Tetranychidae). *J. Fac. Sci. Hokkaido Univ., Ser. 6, Zool.*, 15: 618–624. [*Eotetranychus shii*, *Eotetranychus celtis*]
73. Ehara, S. (1965d) Acari as agricultural and forestry pests. Taxonomy and ecology of mites parasitic on plants (pp. 383–398). Damages and pest control of sider mites and gall mites (pp. 398–413). In: Sasa, M. (ed.) *Mites. An Introduction to Classification, Bionomics and Control of Acarina*. University of Tokyo Press, Tokyo, 486 pp. [江原昭三“植物寄生ダニ類の分類と生態” “ハダニ類およびフシダニ類の被害とその防除” In: 佐々学(編) ダニ類 — その分類・生態・防除 —. 東京大学出版会 (東京)]
74. Ehara, S. (1965e) *Amblyseius japonicus* to *Blattisocius dentriticus* (7 spp.) (pp. 393–394) + *Tarsonemus floricolus* to *Thoribdella japonica* (7 spp. pp. 411–413) + *Agistemus exsertus* to *Anystis baccarium* (2 spp. pp. 414) + *Cheletomorpha tatami* (1 sp., p. 415), *Bryobia eharai* to *Rhyncaphytoptus ulmivagrans* (23 spp., pp. 416–421.) In: Okada, Y-K. et al. (eds.) *New Encyclopedia of Animals in Japan (Middle vol.)*. Hokuryû-kan, Tokyo, 803 pp. [江原昭三“ヤマトカブリダニ〜フツウマヨイダニ + ナミホコリダニ〜ヤマトテングダニ + コブモチナガヒシダニ〜ハモリダニ + タタミツメダニ + キクビラハダニ〜ニレサビダニ” In: 岡田 要ほか(編) 新日本動物図鑑 [中]. 北隆館 (東京)]
75. Ehara, S. (1966a) A tentative catalogue of predatory mites of Phytoseiidae known from Asia, with descriptions of five new species from Japan. *Mushi*, 39: 9–30. [*Typhlodromus (Neoseiulus) insularis*, *Typhlodromus (Neoseiulus) yasumatsui*, *Amblyseius (Amblyseius) kaguya*, *Phytoseius (Phytoseius) blakistoni*, *Phytoseius (Phytoseius) capitatus*]
76. Ehara, S. (1966b) Some mites associated with plants in the State of São Paulo, Brazil, with a list of plant mites of South America. *Japanese Journal of Zoology*, 15: 129–149. [*Amblyseius sakagamii*, *Amblyseius neotropicus*, *Amblyseius akahirai*, *Phytoseiulus chanti*, *Phytoseius (Pennaseius) mumai*]
77. Ehara, S. (1966c) The tetranychoid mites of Okinawa Island (Acarina: Prostigmata). *J. Fac. Sci. Hokkaido Univ., Ser. 6, Zool.*, 16: 1–22. [*Eotetranychus asiaticus*, *Oligonychus tsudomei*, *Oligonychus uruma*]
78. Ehara, S. (1966d) A guide to the spider mites of the genus *Tetranychus* (Acarina: Tetranychidae). *Plant Protection*, 20: 88–91. [江原昭三“*Tetranychus* 属ハダニの見分け方” 植物防疫]
79. Ehara, S. (1966e) Scorpiones (pp. 46–52, 56–60), Acarina (pp. 139–194), Palpigradi (pp. 194–199), Thelyphonida (pp. 199–207), Schizopeltida (pp. 207–211), Amblypygi (pp. 194–199), Ricinulei (pp. 286–290), Solifugae (pp. 290–298). In: Uchida, T. (ed.) *Systematic Zoology 7 (Middle vol. A)*. Nakayama-Shoten Co., Ltd., Tokyo. 307 pp. [江原昭三“サソリ目 (「発生」以外), ダニ目, 鬚脚目, サソリモドキ目, ヤイトムシ目, 無鞭目, 節腹目, 避日目” In: 内田 亨(編) 動物系統分類学 7 (中A). 中山書店 (東京)]
80. Ehara, S. (1966f) Pauropoda (pp. 30–39), Diplopoda (in part, pp. 45–55, 58–60), Chilopoda (in Part, pp. 82, 100–104, 116–117), and Symphyla (pp. 125–136). In: Uchida, T. (ed.) *Systematic Zoology 7 (Middle vol. B)*. Nakayama-Shoten Co., Ltd., Tokyo, 141 pp. [江原昭三“少脚綱, 倍脚綱 (一部), 唇脚綱 (一部), 結合綱” In: 内田 亨(編) 動物系統分類学 7 (中B). 中山書店 (東京)]
81. Ehara, S. (1966g) Tetranychoid mites. pp. 534–537. In: Committee of Agricultural Administration (ed.) *Dictionary of Agriculture I*. Committee of Agricultural Administration, Tokyo, 938 pp. [江原昭三“ハダニ” In: 農政調査委員会(編) 体系農業百科事典 I. 農政調査委員会 (東京)]
82. Ehara, S. (1966h) Morphology, biology and classification of eriophyid mites. *Nôyaku Jidai (Agchem Age)*, 76: 1–5. [江原昭三“サビダニとその分類” 農薬時代]
83. Ehara, S. (1967a) Phytoseiid mites from Okinawa Island (Acarina: Mesostigmata). *Mushi*, 40: 67–82. [*Typhlodromus (Anthoseius) miyarae*, *Typhlodromus (Anthoseius) ryukyuenis*, *Amblyseius (Amblyseius) okinawanus*, *Amblyseius (Paraphytoseius) urumanus*, *Okiseius subtropicus*, *Phytoseius (Pennaseius) ikeharai*, Genus *Okiseius*]
84. Ehara, S. (1967b) Raphignathoid mites associated with plants in Okinawa Island (Eupalopsellidae, Stigmaeidae). *Proceedings of the Japan Academy*, 43: 322–326. [*Exothorhis okinawana*,

- Agistemus citrinus*]
85. Ehara, S. (1967c) Phytoseiid mites from Hokkaido (Acarina: Mesostigmata). *J. Fac. Sci. Hokkaido Univ., Ser. 6, Zool.*, 16: 212–233. [*Typhlodromus (Anthoseius) borealis*, *Amblyseius (Amblyseius) haimatus*, *Amblyseius (Amblyseius) paraki*, *Amblyseius (Amblyseius) ainu*, *Amblyseius (Amblyseius) morii*, *Amblyseius (Amblyseius) firmus*, *Amblyseius (Amblyseius) ezoensis*, *Amblyseius (Kampimodromus) maritimus*, *Phytoseius (Phytoseius) kishii*, *Phytoseius (Phytoseius) campestris*]
86. Ehara, S. and Yamada, M. (1968) Description of a new species of *Bryobia* from Japan (Acarina: Tetranychidae). *Annot. Zool. Japon.*, 41: 66–69. [*Bryobia japonica*]
87. Ehara, S. (1968a) On two mites of economic importance in Japan (Arachnida: Acarina). *Applied Entomology and Zoology*, 3: 124–129.
88. Ehara, S. (1968b) Methods of surveys of Arthropoda. Acari – 1. pp. 83–85. Kato, M. (ed.) *Comparative Research on Structure of Secondary Product in Various Terrestrial Ecosystems*. Methods of Surveys on Fauna of Terrestrial Animals in the JIBP-CT-S Section. [江原昭三 “節足動物調査法. ダニ類—1.” In: 加藤陸奥雄 (編) 各種陸上生態系における二次生産構造の比較研究. JIBP/CT-S セクションにおける陸上動物相調査法]
89. Ehara, S. (1968c) Biology of mites. *Kagaku to Seibutsu*, 6: 331–339. [江原昭三 “ダニとその生物学” 化学と生物]
90. Ehara, S. (1968d) Acari and insects. *Konchū to Shizen*. 3(7): 9–12. [江原昭三 “ダニと昆虫” 昆虫と自然]
91. Nomura, K. and Ehara, S. (eds.) (1968) *Handbook of Mites of Agricultural Crops in Japan*. Zenkoku Nōson Kyōkai Kyōkai, Tokyo, 80 pp. [野村健一・江原昭三 (共編著) “原色 農林作物のダニ” 全国農村教育協会 (東京)]
92. Ehara, S. and Mori, H. (1969) A new species of the genus *Tetranychopsis* from Japan (Acarina: Tetranychidae). *Annot. Zool. Japon.*, 42: 45–48. [*Tetranychopsis borealis*]
93. Ehara, S. (1969a) Three spider mites of the genus *Eotetranychus* infesting fruit trees in Japan (Acarina: Tetranychidae). *Appl. Entomol. Zool.*, 4: 16–22. [*Eotetranychus boreus*, *Eotetranychus geniculatus*]
94. Ehara, S. (1969b) Spider mites of sugar cane in eastern Asia (Acarina: Tetranychidae). *Journal of Faculty of Education, Tottori University (Natural Sciences)*, 20: 19–25. [*Oligonychus kadarsani*]
95. Ehara, S. (1969c) The tetranychoid mites of Taiwan (Acarina: Prostigmata). *J. Fac. Educ. Tottori Univ. (Nat. Sci.)*, 20: 79–103. [*Tetranychus taiwanicus*]
96. Ehara, S. (1969d) Spider mites appeared in “List of Important Diseases and Pests of Economic Plants in Japan (Appendage: Weeds)”. *Plant Protection*, 23: 249–252. [江原昭三 “日本有用植物病害虫名彙” のダニ関係の事項について. 植物防疫]
97. Ehara, S. (1969e) Introductio to Mites and Ticks. *Tottori Seibutsu*, 3/4: 4–9. [江原昭三 “ダニのはなし” 鳥取生物]
98. Ehara, S. (1970a) Phytoseiid mites from Taiwan (Acarina: Mesostigmata). *Mushi*, 43: 55–63. [*Amblyseius (Amblyseius) taiwanicus*, *Iphiseius formosanus*, *Phytoseius (Phytoseius) huangii*]
99. Ehara, S. (1970b) Four species of the *carpini* complex of *Eotetranychus* in Japan (Acarina: Tetranychidae). *J. Fac. Educ. Tottori Univ. (Nat. Sci.)*, 21: 132–141.
100. Ehara, S. (1970c) Mites inhabiting on plants. *Konchū-to-Shizen*, 5: 17–20. [江原昭三 “植物につくダニ” 昆虫と自然]
101. Ehara, S. (1970d) Mites that emerge during rearing of insects. *Insectarium (Tokyo)*, 7(10): 150–151. [江原昭三 “昆虫の飼育中に発生するダニ類” インセクタリウム]
102. Ehara, S. (1971a) Description of a new species of *Oligonychus*, with notes on *Bryobia pritchardi* Rimando and *Tetranychopsis borealis* Ehara and Mori (Acarina: Tetranychidae). *J. Fac. Educ. Tottori Univ. (Nat. Sci.)*, 22: 7–11. [*Oligonychus rubicundus*]
103. Ehara, S. and Lee, L. H. Y. (1971) Mites associated with plants in Hong Kong. *J. Fac. Educ. Tottori Univ. (Nat. Sci.)*, 22: 61–78. [*Typhlodromus (Anthoseius) chinensis*, *Amblyseius (Amblyseius) siaki*, *Amblyseius (Amblyseius) nicholsii*]
104. Ehara, S. (1971b) Tetranychid mites of Japanese cedar (Acarina: Tetranychidae). *Forest Pests*, 20: 150–151. [江原昭三 “スギを加害するハダニの種類” 森林防疫]
105. Ehara, S. (1971c) Recent knowledge on plant mites. *Kongetsu-no-Nōyaku*, 15(9): 58–60. [江原昭三 “植物ダニ類の最近の知見” 今月の農業]
106. Ehara, S. (1972a) Some phytoseiid mites from Japan, with descriptions of thirteen new species (Acarina: Mesostigmata). *Mushi*, 46: 137–173. [*Typhlodromus (Anthoseius) kiso*, *Typhlodromus (Anthoseius) hirashimai*, *Typhlodromus (Anthoseius) serrulatus*, *Typhlodromus (Anthoseius) yamashitai*, *Typhlodromus (Anthoseius) ternatus*, *Amblyseius (Amblyseius) inabanus*, *Amblyseius (Amblyseius) yanoi*, *Amblyseius (Amblyseius) neoparaki*, *Amblyseius (Amblyseius) makuwa*, *Amblyseius (Amblyseius) ishikawai*, *Amblyseius (Amblyseius) shiganus*, *Amblyseius (Amblyseius) ishizuchiensis*, *Amblyseius (Amblyseius) hinoki*]
107. Nomura, K. and Ehara, S. (eds.) (1972) *Handbook of Mites of Agricultural Crops in Japan (Revised Edition)*. Zenkoku Nōson Kyōkai Kyōkai, Tokyo, 128 pp. [野村健一・江原昭三 (共編著) “新版 原色農林作物のダニ” 全国農村教育協会 (東京)]
108. Ehara, S. (1972b) Order Acarina. pp. 371–383. In: *Yatsu and*

- Uchida's Dictionary of Taxa in Animals*. Nakayama-Shoten Co., Ltd., Tokyo, 1411 pp. [江原昭三 “ダニ目” In: 谷津・内田動物分類名辞典. 中山書店 (東京)]
109. Ehara, S. (1973a) Three species of the genus *Schizotetranychus* (Acarina: Tetranychidae). *Annot. Zool. Japon.*, 46: 224–232. [*Schizotetranychus leguminosus*, *Schizotetranychus cercidiphyllif*]
110. Ehara, S. (1973b) Species and host plants of spider mites on fruit trees. pp. 7–10. *Research on Insecticide Resistance in Spider Mites on Fruit Trees*. Nihon-Shokubutsu-Bôeki-Kyôkai. [江原昭三 “果樹ハダニ類の種類および寄主植物. 果樹ハダニ類の薬剤抵抗性に関する研究” 日本植物防疫協会]
111. Ehara, S. (1973c) A guide to the spider mites on crops. *Plant Protection*, 27: 293–298. [江原昭三 “野菜を害するハダニの見分け方” 植物防疫]
112. Ehara, S. (1974a) A guide to the predatory mites of Japan. *Plant Protection*, 28: 125–130. [江原昭三 “捕食性ダニ類の見分け方” 植物防疫]
113. Ehara, S. (1974b) Phytoseiidae (p. 173) and Sider mite (p. 500). In: Imaizumi, Y. et al. (eds.) *Encyclopedia Genre Japonica*. Vol. 20 Animals. Shogakukan, Tokyo, 683 pp. [江原昭三 “カブリダニ, ハダニ” In: 万有百科大辞典 20. 動物. 小学館 (東京)]
114. Ondo, Y. and Ehara, S. (1974) Fauna of areas additionally planned for the Quasi-National Park around Mt. Hyonosen and other mountains in the eastern Chugoku Mountains. pp. 141–154. In: *A Report of surveys on natural environment in the eastern Chugoku Mountains*. Hyogo, Okayama, and Tottori Prefectures, 310 pp. [恩藤芳典・江原昭三 “氷ノ山等東中国山地国定公園拡大予定地域の動物相. — 鳥取県内地域の実情 —” 東中国山地自然環境調査報告. 兵庫県・岡山県・鳥取県]
115. Ehara, S. and Osakabe, M. (1974) History of agricultural acarology after the World War II. *Journal of the Society for the Study of Acari*, No. 1, 22–24. [江原昭三・刑部 勝 “戦後における農業ダニ学関係年譜” ダニ類研究会会報]
116. Ehara, S. (1975a) A guide to the tetranychid mites of agricultural importance in Japan. *JIBP Synthesis, Tokyo*, 7: 15–23.
117. Ehara, S. (1975b) List and keys to Phytoseiidae of Japan. *JIBP Synthesis*, 7: 25–37.
118. Ehara, S. and Wongsiri, T. (1975) The spider mites of Thailand (Acarina: Tetranychidae). *Mushi*, 48: 149–185. [*Aponychus siamensis*, *Aponychus nakaoui*, *Eotetranychus suvipakiti*, *Eotetranychus thailandicus*, *Schizotetranychus vermiculatus*, *Schizotetranychus yoshimekii*, *Schizotetranychus bhandhufalcki*, *Schizotetranychus Chiangmaiensis*, *Oligonychus yasumatsui*]
119. Ehara, S. (1975c) Description of a new species of *Tuckerella* from Japan (Acarina: Tuckerellidae). *International Journal of Acarology*, 1: 1–5. [*Tuckerella japonica*]
120. Ehara, S. and Shinkaji, N. (1975) *An Introduction to Agricultural Acarology*. Zenkoku Nôson Kyôiku Kyôkai, Tokyo, 328 pp. [江原昭三・真梶徳純 “農業ダニ学” 全国農村教育協会 (東京)]
121. Ehara, S. and Bhandhufalck, A. (1977) Phytoseiid mites of Thailand (Acarina: Mesostigmata). *J. Fac. Educ. Tottori Univ. (Nat. Sci.)*, 27: 43–82. [*Typhlodromus (Anthoseius) thailandicus*, *Phytoseius (Phytoseius) neoferox*, *Amblyseius (Amblyseius) aizawai*, *Amblyseius (Amblyseius) okumae*, *Amblyseius (Amblyseius) siamensis*, *Amblyseius (Amblyseius) anuwati*, *Amblyseius (Amblyseius) hidakai*, *Amblyseius (Phytoscutella) wongsiri*]
122. Ehara, S. and Yokogawa, M. (1977) Two new *Amblyseius* from Japan with notes on three other species (Acarina: Phytoseiidae). *Proceedings of the Japanese Society of Systematic Zoology*, 13: 50–58. [*Amblyseius (Amblyseius) koyamanus*, *Amblyseius (Amblyseius) ochii*]
123. Ehara, S. (1977a) A review of taxonomic studies on natural enemies of spider mites in Japan. *Review of Plant Protection Research*, 10: 29–48.
124. Ehara, S. (1977b) Remarks on studies of tetranychoid mites in Japan before World War II. pp. 241–249. In: Sasa, M. and Aoki, J. (eds.) *Contributions to Acarology in Japan*. Zukan-no-Hokuryû-kan, Tokyo, 602 pp. [江原昭三 “日本における第二次大戦前のハダニ研究について” In: 佐々学・青木淳一 (編) ダニ学の進歩. 図鑑の北隆館 (東京)]
125. Ehara, S. (1978a) Two new species of phytoseiid mites from Hokkaido (Acarina: Phytoseiidae). *Proc. Jpn. Acad.*, 54: 446–450. [*Typhlodromus (Anthoseius) takahashii*, *Phytoseius (Pennaseius) tenuiformis*]
126. Ehara, S. (1978b) A new genus and a new subgenus of spider mites from northern Japan (Acarina: Tetranychidae). *J. Fac. Educ. Tottori Univ. (Nat. Sci.)*, 28: 87–93. [*Panonychus (Sasanychus) akitanus*, *Yezonychus sapporensis*, Subgenus *Sasanychus*, Genus *Yezonychus*]
127. Ehara, S. (1979a) Life of mites. pp. 21–27. In: Obara, H. (ed.) *World of Life*. Kôdansha Co., Ltd., Tokyo, 205 pp. [江原昭三 “ダニの生活” In: 小原秀雄 (編) 生きものの世界. 講談社 (東京)]
128. Ehara, S. (1979b) Acari (in part). In: Imajima, M. and Takeda, M. (eds.) *Revised Encyclopedia of Animals in Japan*. Hokuryû-kan, Tokyo, 793 pp. [江原昭三 “ダニ目 (一部)” 今島 実・武田正倫 (編) 新編日本動物図鑑, 北隆館 (東京)]
129. Ehara, S., Chinone, S., Nemoto, H. and Kadono, F. (1979) Wheat curl mite found in Japan (Acarina: Eriophyidae). *Plant Protection*, 33: 236–240. [江原昭三・茅根重夫・根本久・上遠野富士夫 “新害虫チューリップサビダニ” 植物防疫]

130. Ehara, S. and Hamaoka, K. (1980) A new *Typhlodromus* from Japan with notes on four other species of phytoseiid mites. *Acta Arachnol.*, 29: 3–8. [*Typhlodromus (Paraseiulus) yokogawae*]
131. Ehara, S. (1980a) Two species of spider mites from Japan (Acarina, Tetranychidae). *Annot. Zool. Japon.*, 53: 202–209. [*Eurytetranychus japonicus*]
132. Ehara, S. (ed.) (1980b) *Illustrations of the Mites and Ticks of Japan*. Zenkoku Nōson Kyōiku Kyōkai, Tokyo, 298 pp. [江原昭三 (編著) “日本ダニ類図鑑” 全国農村教育協会 (東京)]
133. Ehara, S., Hikichi, K., Nomura, Y. and Hirota, M. (1980) A zoological survey of Tottori Sand Dune. pp. 65–77. In: Education Committee of Tottori City (ed.) *Report of Special Surveys in 1979 on the Tottori Sand Dunes as a Natural Monument*. Education Board of Tottori City, 92 pp. (In Japanese) [江原昭三・引地勘治・野村幸弘・広田 都 “鳥取砂丘の動物の調査” 昭和54年度天然記念物鳥取砂丘特別調査報告書 (鳥取市教育委員会)]
134. Ehara, S. (1981) Description of a new *Typhlodromus* from “miso” factories, with synonymy of *T. bambusae* Ehara (Acarina: Phytoseiidae). *Japanese Journal of Sanitary Zoology*, 32: 235–237. [*Typhlodromus (Anthoseius) shibai*]
135. Ehara, S. and Saito, Y. (1981) Some topics in spider mites with special attention to the morphology of spinneret and spinning behavior. pp. 522–537. In: Ishii, S. (ed.) *Recent Advances in Entomology*. University of Tokyo Press, 588 pp. [江原昭三・斎藤 裕 “ハダニに関する諸問題. とくに糸器官の形態と糸の機能” In: 石井象二郎 (編) 昆虫学最近の進歩. 東京大学出版会 (東京)]
136. Ehara, S. (1982a) Two new species of phytoseiid mites from Japan (Acarina: Phytoseiidae). *Appl. Entomol. Zool.*, 17: 40–45. [*Amblyseius (Amblyseius) alpicola*, *Amblyseius (Indoseiulus) liturivorus*, Subgenus *Indoseiulus*]
137. Ehara, S. (1982b) Two new species of false spider mites (Acarina, Tenuipalpidae) from Japan. *Annot. Zool. Japon.*, 55: 175–179. [*Aegyptobia arenaria*, *Tenuipalpus boninensis*]
138. Yano, K. and Ehara, S. (1982) Erythraeid mites (Acarina, Erythraeidae) parasitic on planthoppers. *Kontyū*, 50: 344–345.
139. Ehara, S. and Oomem-Kalsbeek, F. (1983) Stigmaeid mites associated with tea plants in Indonesia (Prostigmata: Stigmaeidae). *Internat. J. Acarol.*, 9: 19–26. [*Zetzellia javanica*, *Zetzellia rugosa*, *Agistemus orbicularis*, *Agistemus sumatrensis*, *Agistemus pieteri*]
140. Ehara, S. (1983a) Animals and Plants in Sand Dune. *Animals. Sakyū-Kenkyū* 30: 62–67. [江原昭三 “砂丘地の理化学性と動植物. 動物” 砂丘研究]
141. Ehara, S. (1983b) Classification of Japanese mites on plants. *Byōtai-Seiri* (= Pathophysiology), 3: 243–244. [江原昭三 “日本産植物ダニ類の分類” 病態生理]
142. Ehara, S. (1983c) On the Japanese translation of “spermatheca”. *Epilachna Newsletter*, No. 12, p. 4. [江原昭三 “Spermatheca の訳語について” エピラクナ通信]
143. Ehara, S. and Wongsiri, T. (1984) Stigmaeid mites associated with plants in Thailand (Acarina, Stigmaeidae). *Kontyū*, 52: 110–118. [*Eryngiopus yasumatsui*, *Agistemus thianus*, *Agistemus giganteus*, *Agistemus siamensis*]
144. Ehara, S. (1984) Acari. p. 557. In: Shin-Nihonkai-Shinbunsha (ed.) *Encyclopedia of Tottori Prefecture*. Shin-Nihonkai-Shinbunsha, Tottori, 1101 pp. [江原昭三 “ダニ” In: 鳥取県大百科事典. 新日本海新聞社 (鳥取)]
145. Ehara, S. (1985a) Five species of phytoseiid mites from Japan with descriptions of two new species (Acarina, Phytoseiidae). *Zoological Science*, 2: 115–121. [*Typhlodromus (Anthoseius) higoensis*, *Amblyseius (Amblyseius) hirotae*]
146. Ehara, S. (1985b) A new species of the genus *Agistemus* Summers from Hokkaido (Acarina: Stigmaeidae). *Proc. Japan Acad.*, 61: 60–62. [*Agistemus iburiensis*]
147. Ehara, S. (1985c) Phytoseiidae (p. 582) in Vol. 5 and Spider mite (p. 563) in Vol. 22. In: *Heibonsha's Encyclopedia*. Heibonsha Co., Ltd., Tokyo. [江原昭三 “カブリダニ, ハダニ” 平凡社大百科事典. 平凡社 (東京)]
148. Ehara, S. and Gotoh, T. (1987) Notes on the genus *Sasanychus* Ehara, new status, with description of a new species from Hokkaido (Acarina, Tetranychidae). *Zool. Sci.*, 4: 375–378. [*Sasanychus pusillus*]
149. Ehara, S. (1987) Two new spider mites of *Eotetranychus* injurious to maple in northern Japan (Acarina: Tetranychidae). *Appl. Entomol. Zool.*, 22: 624–629. [*Eotetranychus spectabilis*, *Eotetranychus dissectus*]
150. Ehara, S. and Kadono, F. (1987) Acari. pp. 21–25. In: The Japanese Society of Applied Entomology and Zoology (ed.) *Major Insect and Other Pests of Economic Plants in Japan*. Japan Plant Protection Association, Tokyo, 379 pp. [江原昭三・上遠野富士夫 “ダニ類” 日本応用動物昆虫学会 (編) 農林有害動物・昆虫名鑑. 日本植物防疫協会 (東京)]
151. Ehara, S. and Tho, Y. P. (1988) Spider mites of the Malay Peninsula (Acarina: Tetranychidae). *J. Fac. Educ. Tottori Univ. (Nat. Sci.)*, 37: 1–24. [*Schizotetranychus colocasiae* Ehara, 1988, *Schizotetranychus malayanus* Ehara, 1988, *Schizotetranychus kochummeni* Ehara, 1988, *Schizotetranychus approximatus* Ehara, 1988, *Schizotetranychus laevidorsatus* Ehara, 1988, *Schizotetranychus saitoi* Ehara, 1988, *Tetranychus malaysiensis* Ehara, 1988, *Tetranychus bambusicola* Ehara, 1988]
152. Ehara, S. and Abdul Ghani, I. (1988) Cheyletid mites associated

- with plants in the Malay Peninsula, with description of a new species (Acarina: Cheyletidae). *Proc. Japan Acad.*, 64: 237–240. [**Hemicheyletia morii Ehara, 1988**]
153. Ehara, S. (1989a) Four new species of spider mites (Acarina: Tetranychidae). *Proc. Jpn. Soc. Syst. Zool.*, 40: 28–38. [**Schizotetranychus brevisetosus, Eotetranychus cornicola, Eotetranychus tsugaruensis, Eotetranychus nomurai**]
154. Ehara, S. (1989b) Recent advances in taxonomy of Japanese tetranychoid mites. *Plant Protection*, 43: 357–361. [江原昭三 “最近におけるハダニ類の分類研究の進展” 植物防疫]
155. Ehara, S. and Masaki, M. (1989) Notes on two Japanese species of *Tetranychus* (Acarina: Tetranychidae). *Acta Arachnol.*, 38: 49–54.
156. Ehara, S. and Gotoh, T. (1990) A new *Tetranychus* closely related to *T. viennensis* Zacher (Acari: Tetranychidae). *Internat. J. Acarol.*, 16: 55–58. [**Tetranychus quercivorus**]
157. Ryu, M.-O. and Ehara, S. (1990) Description of a new species of phytoseiid mite (Acarina: Phytoseiidae) and a list of phytoseiids from Korea. *Korean Journal of Entomology*, 20: 145–150. [**Typhlodromus (Paraseiulus) deogyuensis**]
158. Ehara, S. (ed.) (1990a) *Topics in Mites and Ticks. Part I.* Gihôdô Shuppan, Tokyo, 229 pp. [江原昭三 (編) “ダニのはなし. I. 生態から防除まで” 技報堂出版 (東京)]
159. Ehara, S. (ed.) (1990b) *Topics in Mites and Ticks. Part II.* Gihôdô Shuppan, Tokyo, 223 pp. [江原昭三 (編) “ダニのはなし. II. 生態から防除まで” 技報堂出版 (東京)]
160. Ehara, S. and Gotoh, T. (1991) A new species of *Panonychus* from dwarf bamboo in Japan (Acari: Tetranychidae). *Internat. J. Acarol.*, 17: 9–12. [**Panonychus bambusicola**]
161. Ryu, M.-O. and Ehara, S. (1991) Three phytoseiid mites from Korea (Acari: Phytoseiidae). *Acta Arachnol.*, 40: 23–30. [**Phytoseius (Phytoseius) koreanus**]
162. Matsubara, T., Ohta, Y. and Ehara, S. (1992) Fine structure of female and male internal reproductive organs in a spider mite *Tetranychina harti* (Ewing) (Acari: Tetranychidae). *Appl. Entomol. Zool.*, 27: 65–78.
163. Ehara, S. and Gotoh, T. (1992) Descriptions of two *Panonychus* spider mites from Japan, with a key to species of the genus in the world (Acari: Tetranychidae). *Appl. Entomol. Zool.*, 27: 107–115. [**Panonychus thelytokus**]
164. Ryu, M.-O. and Ehara, S. (1992) A new and two unrecorded species of phytoseiid mites (Acari, Phytoseiidae) from Korea. *Japanese Journal of Entomology*, 60: 723–729. [**Typhlodromus wonkooi**]
165. Gotoh, T. and Ehara, S. (1992) Notes on the Japanese species of the genus *Panonychus* (Acari, Tetranychidae). *Plant Protection*, 46: 342–347. [後藤哲雄・江原昭三 “*Panonychus* 属ハダニの研究の現状” 植物防疫]
166. Ehara, S. and Ohkubo, N. (1992) The occurrence of *Tenuipalpus pacificus* Baker (Acari: Tenuipalpidae) in Japan. *Plant Protection*, 46: 245–248. [江原昭三・大久保憲秀 “日本国内における *Tenuipalpus pacificus* (ランヒメハダニ) の存在” 植物防疫]
167. Ehara, S. and Takada, N. (eds.) (1992) *Topics in Mite-Born Diseases.* Gihôdô Shuppan, Tokyo, 214 pp. [江原昭三・高田伸弘 (編) “ダニと病気のはなし” 技報堂出版 (東京)]
168. Ehara, S. and Gotoh, T. (1993) Description of the male of *Panonychus thelytokus* Ehara et Gotoh (Acari, Tetranychidae). *Jpn. J. Entomol.*, 61: 157–160.
169. Ryu, M.-O. and Ehara, S. (1993) Two new species of genus *Phytoseius* (Phytoseiidae, Acari) from Korea. *Korean Journal of Systematic Zoology*, 9: 13–18. [**Phytoseius (Phytoseius) seungtaii, Phytoseius (Phytoseius) sonunensis**]
170. Ehara, S. (1993a) Two new species of the genus *Agistemus* Summers from Malaysia (Acari: Stigmaeidae). *Journal of the Acarological Society of Japan*, 2: 79–82. [**Agistemus malayensis, Agistemus takagii**]
171. Ehara, S. (1993b) Phytoseiidae (pp. 20–21), Stigmaeidae, Eupalopsellidae (pp. 31), Tuckerellidae, Tenuipalpidae, Tetranychidae, Anystidae (pp. 33–34). In: Wildlife Research Center (ed.) *List of Wildlife in Japan. Invertebrata.* Japan Wildlife Research Center, Tokyo, 106 pp. [江原昭三 “カブリダニ科・ナガヒシダニ科・ツツダニ科・ヒメハダニ科・ケナガハダニ科・ハダニ科・ハモリダニ科” In: 日本産野生生物目録 無脊椎動物. 自然環境研究センター (東京)]
172. Ehara, S. (ed.) (1993c) *Plant Mites of Japan in Colors.* Zenkoku Nôson Kyôiku Kyôkai, Tokyo, 298 pp. [江原昭三 (編著) “日本原色植物ダニ図鑑” 全国農村教育協会 (東京)]
173. Ehara, S. and Tsurusaki, N. (ed.) (1993) *Tottori's Outstanding Nature. Animals and Their Conservation.* Tottori Prefecture (Division of Nature Conservation. Department of Health and Environment), Tottori, 327 pp. [江原昭三・鶴崎展巨 (編) “鳥取県のすぐれた自然 (動物編)” 鳥取県衛生環境部自然保護課発行 (鳥取市)]
174. Ehara, S., Okada, Y. and Kato, H. (1994) Contribution to the knowledge of the mite family Phytoseiidae in Japan (Acari: Gamasina). *J. Fac. Educ. Tottori Univ. (Nat. Sci.)*, 42: 119–160. [**Amblyseius (Amblyseius) kokufuensis Ehara & Kato, 1994, Amblyseius (Amblyseius) neofirmus Ehara & Okada, 1994, Amblyseiuella amanoi Ehara, 1994, Phytoseius (Phytoseius) quercicola Ehara, 1994, Phytoseius (Phytoseius) kuzusanus Ehara, 1994, Typhlodromus (Anthoseius) kadonoi Ehara, 1994, Typhlodromus (Anthoseius) silvanus Ehara & Kishimoto, 1994**]

175. Ehara, S. (1995a) A new species of *Tetranychus* (Acari, Tetranychidae) from the Ryukyu Islands. *Jpn. J. Entomol.*, 63: 229–233. [*Tetranychus okinawanus*]
176. Ryu, M. -O. and Ehara, S. (1995) Two spider mites from Korea (Acari, Tetranychidae). *J. Acarol. Soc. Japan*, 4: 15–20. [*Eurytetranychus koreanus*]
177. Yano, K., Hamasaki, S., Ehara, S. and Napompeth, B. (1995) Mites associated with orchids in Thailand. *Jpn. J. Entomol.*, 63: 583–588.
178. Ehara, S. (1995b) Forty years of studying mites and insects. *Tottori Seibutsu*, 28: 34–40. [江原昭三 “ダニと昆虫の研究 40年” 鳥取生物]
179. Ehara, S. and Gotoh, T. (1996) Two new species of spider mites occurring in Japan (Acari, Tetranychidae). *J. Acarol. Soc. Japan*, 5: 17–25. [*Panonychus osmanthi*, *Tetranychus pueraricola*]
180. Ehara, S. and Shinkaji, N. (eds.) (1996) *Principles of Plant Acarology*. Zenkoku Nôson Kyôiku Kyôkai, Tokyo, 419 pp. [江原昭三・真梶徳純 (編) “植物ダニ学” 全国農村教育協会 (東京)]
181. Ehara, S. and Gotoh, T. (1997) *Eotetranychus quercifoliae*, a new species of spider mite (Acari, Tetranychidae) from *Quercus*. *Jpn. J. Entomol.*, 65: 219–223. [*Eotetranychus quercifoliae*]
182. Ryu, M.-O. and Ehara, S. (1997) Redescription of *Okiseius (Kampimodromellus) juglandis* (Wang et Xu) (Acari, Phytoseiidae). *J. Acarol. Soc. Japan*, 6: 113–116.
183. Ehara, S., Gotoh, T. and Nagamine, M. (1997) The occurrence of *Oligonychus coffeae* (Nietner) (Acari: Tetranychidae) in Okinawa Island. *Plant Protection*, 51: 25–28. [江原昭三・後藤哲雄・長嶺将昭 “沖縄本島における *Oligonychus coffeae* (マンゴーハダニ) の存在” 植物防疫]
184. Ehara, S. and de Moraes, G. J. (1998) A new species of *Amblyseius (Euseius)* (Acari: Phytoseiidae) from Citrus in Uruguay. *Entomological Science*, 1: 59–61. [*Amblyseius (Euseius) inouei*]
185. Ehara, S. and Amano, H. (1998) A revision of the mite family Phytoseiidae in Japan (Acari, Gamasida), with remarks on its biology. *Species Diversity*, 3: 25–73. [*Amblyseius (Proprioseiopsis) nemotoi*, *Typhlodromus (Typhlodromus) pseudopyri*, *Typhlodromus (Typhlodromus) armiger*, Tribe *Indoseiulini*]
186. Ehara, S., Kunimoto, Y. and Gotoh, T. (1998) An exotic spider mite found on poinsettia in Japan (Acari, Tetranychidae). *Plant Protection*, 52: 228–230. [江原昭三・國本佳範・後藤哲雄 “新たに発見されたポインセチアのハダニ” 植物防疫]
187. Ehara, S. and Yogi, K. (1998) Discovery of *Eutetranychus orientalis* (Klein) (Acari, Tetranychidae) from Okinawa Island, Japan. *Plant Protection*, 52: 530–533. [江原昭三・與儀喜代政 “沖縄本島でパパイヤなどから発見された *Eutetranychus orientalis* (トウヨウハダニ) について” 植物防疫]
188. Ehara, S. (1999a) Revision of the spider mite family Tetranychidae of Japan (Acari, Prostigmata). *Species Diversity*, 4: 63–141. [*Eotetranychus rubicans*, *Oligonychus gotohi*, *Tetranychus parakanzawai*]
189. Ehara, S. (1999b) *My Life with Insects and Mites*. Nippon Tosyo Kankô Kai, Tokyo, 177 pp. [江原昭三 “虫屋の来た道” 日本図書刊行会 (東京)]
190. Yogi, K., Ehara, S., Higa, Y., Soemori, H. and Shinjyô, T. (1999) Occurrence and host plants of *Eutetranychus orientalis* (Klein) (Acari: Tetranychidae) in Okinawa Prefecture. *Kyushu Plant Protection Research*, 45: 109–112. [與儀喜代政・江原昭三・比嘉良次・添盛 浩・新城朝榮 “沖縄県におけるトウヨウハダニの発生と寄主植物について” 九州病害虫研究会報]
191. Osakabe, Mh. and Ehara, S. (2000) Damage to young leaves of pear trees by *Bryobia rubrioculus* (Scheuten) (Acari: Tetranychidae) in Nepal. *J. Acarol. Soc. Japan*, 9: 15–22.
192. Ehara, S., Gotoh, T. and Amano, H. (2000) Two Japanese species of the genus *Paraphytoseius* Swinski and Shechter (Acari, Phytoseiidae). *J. Acarol. Soc. Japan*, 9: 113–118.
193. Ehara, S. (2000a) Method of collecting of mites on plants. pp. 510–513. In: Baba, K. and Hirashima, Y. (eds.) *New Entomosyllogology*. Kyushu Univ. Press, Fukuoka, 2000. 812 pp. [江原昭三 “植物ダニ採集法” In: 馬場金太郎・平嶋義宏 (編) 新版 昆虫採集学. 九州大学出版会 (福岡)]
194. Ehara, S. (2000b) Arachnida, Acari. In: Yamada, M., Aoki, J., Tajika, K. and Morioka, H. (eds.) *Supplements to the Systematic Zoology*. Nakayama-Shoten Co., Ltd., Tokyo, 451 pp. [江原昭三 “クモ形類・ダニ類” pp. 214–220. In: 山田真弓・青木淳一・田近謙一・森岡弘之 (編) 動物系統分類学追補版. 中山書店 (東京)]
195. Ehara, S. and Gotoh, T. (eds.) (2000) *Colored Guide to the Phytophagous Mites of Japan and Their Natural Enemies*. Nissan Chemical Industry Co., Ltd., Tokyo, 110 pp. [江原昭三 (監修)・後藤哲雄 (編) “ポケット版 植物ダニ図鑑” 日産化学工業株式会社 (東京)]
196. Ehara, S. and Masaki, M. (2001) Three species of exotic mites (Acari: Tetranychoidae) recently intercepted at Japanese plant quarantine. *Appl. Entomol. Zool.*, 36: 251–257. [*Oligonychus obliquus*]
197. Ehara, S. and Yamaguchi, T. (2001) Discovery of *Tetranychus neocaledonicus* Andre (Acari, Tetranychidae) from Amami-Oshima Island, Japan. *Plant Protection*, 55: 267–272. [江原昭三・山口卓宏 “日本未記録の広食性ハダニ *Tetranychus*



- neocaledonicus* の奄美大島からの発見” 植物防疫]
198. Ehara, S. (2002a) Some phytoseiid mites (Arachnida: Acari: Phytoseiidae) from West Malaysia. *Species Diversity*, 7: 29–46. [*Amblyseiulella thoi*, *Platyseiella acuta*]
199. Ehara, S. and Ohashi, K. (2002) A new species of *Tetranychus* (Acari: Tetranychidae) from the Kinki District, Japan. *Acta Arachnol.*, 51: 19–22. [*Tetranychus takafujii*]
200. Ehara, S. and Amano, H. (2002) Some Japanese phytoseiid mites (Acari: Phytoseiidae) mostly from Ishigaki and Taketomi Islands. *Entomol. Sci.*, 5: 321–329. [*Amblyseiulella yaeyamana*]
201. Ehara, S. (2002b) Phytoseiid mites (Acari: Phytoseiidae) from Sumatra with description of a new species. *Acta Arachnol.*, 51: 125–133. [*Amblyseius (Amblyseius) sumatrensis*]
202. Ehara, S. (2002c) *Actacarus karoensis* Abé, 1990 (Halacaridae) and *Aegyptobia arenaria* Ehara, 1982 (Tenuipalpidae). pp.165–166. In: Tsurusaki, N. (ed.) *Threatened Wildlife of Tottori Prefecture. Animals*. Tottori Prefecture, Tottori, 214 pp [江原昭三 “カロナギサダニ・スナヒメハダニ” In: 鶴崎展巨(編)レッドデータブックとっとり. 鳥取県の絶滅のおそれのある野生動物. 動物. 鳥取県]
203. Ehara, S. and Ueckermann, E. A. (2003) A new species of the genus *Tenuipalpus* (Acari: Tenuipalpidae) from South Africa. *J. Acarol. Soc. Japan*, 12: 21–24. [*Tenuipalpus masakii*]
204. Ehara, S. (2004a) A collection of spider mites (Arachnida: Acari: Tetranychidae) from Sumatra. *Species Diversity*, 9: 67–76. [*Oligonychus sumatranus*]
205. Ehara, S. (2004b) A false spider mite *Dolichotetranychus zoysiae* sp. nov. (Acari: Tenuipalpidae) attacking lawngrass in Okinawa Island. *J. Acarol. Soc. Japan*, 13: 129–133. [*Dolichotetranychus zoysiae*]
206. Ehara, S. and Amano, H. (2004) Checklist and keys to Japanese Amblyseiinae (Acari: Gamasina: Phytoseiidae). *J. Acarol. Soc. Japan*, 13: 1–30.
207. Shibao, M., Ehara, S., Hosomi, A. and Tanaka, H. (2004) Seasonal fluctuation in population density of phytoseiid mites and the yellow tea thrips, *Scirtothrips dorsalis* Hood (Thysanoptera: Thripidae) on grape, and predation of the thrips by *Euseius sojaensis* (Ehara) (Acari: Phytoseiidae). *Appl. Entomol. Zool.*, 39: 727–730.
208. Ehara, S. and Gotoh, T. (2004a) A guide to the spider mites of Japan (Acari: Tetranychidae) I. *Plant Protection*, 58: 320–324. [江原昭三・後藤哲雄 “ハダニ科の概説と和名改訂” 植物防疫]
209. Ehara, S. and Gotoh, T. (2004b) A guide to the spider mites of Japan (Acari: Tetranychidae) II. *Plant Protection*, 58: 369–371. [江原昭三・後藤哲雄 “ビラハダニ亜科のハダニ” 植物防疫]
210. Ehara, S. and Gotoh, T. (2004c) A guide to the spider mites of Japan (Acari: Tetranychidae) III. *Plant Protection*, 58: 406–410. [江原昭三・後藤哲雄 “ナミハダニ亜科のハダニ (1)” 植物防疫]
211. Ehara, S. and Gotoh, T. (2004d) A guide to the spider mites of Japan (Acari: Tetranychidae) IV. *Plant Protection*, 58: 433–436. [江原昭三・後藤哲雄 “ナミハダニ亜科のハダニ (2)” 植物防疫]
212. Ehara, S. and Gotoh, T. (2004e) A guide to the spider mites of Japan (Acari: Tetranychidae) V. *Plant Protection*, 58: 549–553. [江原昭三・後藤哲雄 “ナミハダニ亜科のハダニ (3)” 植物防疫]
213. Ehara, S. and Ohashi, K. (2005) A new spider mite species of *Schizotetranychus* (Acari: Prostigmata: Tetranychidae) from *Quercus gilva* in Japan. *Zootaxa*, 884: 1–5. [*Schizotetranychus gilvus*]
214. Ehara, S. (2005a) A collection of phytoseiid mites (Acari: Phytoseiidae) from Java with description of a new species. *Acta Arachnol.*, 54: 31–39. [*Indoseiulus santoso*]
215. Ehara, S. and Masaki, M. (2005) Identity of *Tetranychus takafujii* Ehara and Ohashi (Acari: Tetranychidae). *J. Acarol. Soc. Japan*, 14: 123–125.
216. Ehara, S. and Gotoh, T. (2005a) A guide to the spider mites of Japan (Acari: Tetranychidae) VI. *Plant Protection*, 59: 36–40. [江原昭三・後藤哲雄 “ナミハダニ亜科のハダニ (4)” 植物防疫]
217. Ehara, S. and Gotoh, T. (2005b) A guide to the spider mites of Japan (Acari: Tetranychidae) VII. *Plant Protection*, 59: 82–86. [江原昭三・後藤哲雄 “ナミハダニ亜科のハダニ (5)” 植物防疫]
218. Ehara, S. (2005b) A guide to the false spider mites and tuckerellid mites of Japan (Acari: Tenuipalpidae, Tuckerellidae). *Plant Protection*, 59: 70–75. [江原昭三 “ヒメハダニ科およびケナガハダニ科” 植物防疫]
219. Ehara, S. (2005c) A guide to the phytoseiid mites of Japan (Acari: Phytoseiidae) I. *Plant Protection*, 59: 177–182. [江原昭三 “カブリダニ科の概説と日本産の種のリスト” 植物防疫]
220. Ehara, S. (2005d) A guide to the phytoseiid mites of Japan (Acari: Phytoseiidae) II. *Plant Protection*, 59: 235–239. [江原昭三 “ムチカブリダニ亜科 (1)” 植物防疫]
221. Ehara, S. (2005e) A guide to the phytoseiid mites of Japan (Acari: Phytoseiidae) III. *Plant Protection*, 59: 324–328. [江原昭三 “ムチカブリダニ亜科 (2)” 植物防疫]
222. Ehara, S. (2005f) A guide to the phytoseiid mites of Japan (Acari: Phytoseiidae) IV. *Plant Protection*, 59: 361–365. [江原昭三 “ムチカブリダニ亜科 (3)” 植物防疫]
223. Ehara, S. (2005g) A guide to the phytoseiid mites of Japan (Acari: Phytoseiidae) V. *Plant Protection*, 59: 391–395. [江原昭三 “ムチカブリダニ亜科 (4)” 植物防疫]

224. Ehara, S. (2005h) A guide to the phytoseiid mites of Japan (Acari: Phytoseiidae) VI. *Plant Protection*, 59: 427–431. [江原昭三 “ホンカブリダニ亜科” 植物防疫]
225. Ehara, S. (2005i) A guide to the phytoseiid mites of Japan (Acari: Phytoseiidae) VII. *Plant Protection*, 59: 528–532. [江原昭三 “カタカブリダニ亜科 (1)” 植物防疫]
226. Ehara, S. and Ueckermann, E. A. (2006) A new genus of Stigmaeidae (Acari: Prostigmata) from Okinawa Island. *Zootaxa*, 1160: 29–36. [***Gymnostigmaeus akaminei***, Genus ***Gymnostigmaeus***]
227. Ehara, S. and Gotoh, T. (2006) Description of a new *Eotetranychus* from Japan with notes on two other species (Acari: Prostigmata: Tetranychidae). *Internat. J. Acarol.*, 32: 39–44. [***Eotetranychus toyoshimai***]
228. Ehara, S. (2006a) New records of phytoseiid mite species (Acari: Gamasida: Phytoseiidae) from Malaysia with description of a new species. *Systematic & Applied Acarology*, 11: 175–180. [***Phytoseius (Phytoseius) malaysianus***]
229. Ehara, S., Toyoshima, S. and Amano, H. (2006) Three new species of phytoseiid mites (Acari: Phytoseiidae) from Japan. *Internat. J. Acarology*, 32: 345–350 [***Transeius fulvus* Ehara & Toyoshima, 2006, *Typhlodromus (Typhlodromus) moricola* Ehara & Toyoshima, 2006, *Typhlodromus (Anthoseius) kishimotoi* Ehara & Amano, 2006**]
230. Ehara, S. (2006b) A guide to the phytoseiid mites of Japan (Acari: Phytoseiidae) VIII. *Plant Protection*, 60: 31–35. [江原昭三 “カタカブリダニ亜科 (2)” 植物防疫]
231. Shibao, M., Ehara, S., Hosomi, A. and Tanaka, H. (2006) Effect of insecticide application on the population density of yellow tea thrips, *Scirtothrips dorsalis* Hood (Thysanoptera: Thripidae) and *Euseius sojaensis* (Ehara) (Acari: Phytoseiidae) on grape. *Jpn. J. Appl. Entomol. Zool.*, 50: 247–252. [柴尾 学・江原昭三・細見 彰洋・田中 寛 “ブドウにおけるチャイロキイロアザミウマとコウズケカブリダニの個体群密度に及ぼす薬剤散布の影響” 応動昆]
232. Ehara, S. and Gotoh, T. (2007a) Two new species of *Oligonychus* closely related to *O. gotohi* Ehara (Acari: Tetranychidae). *Internat. J. Acarol.*, 33: 15–20. [***Oligonychus castaneae***, ***Oligonychus amiensis***]
233. Ehara, S. and Kishimoto, H. (2007a) Description of a new species of *Phytoscutus* (Acari: Phytoseiidae) from Kyushu, Japan. *Internat. J. Acarol.*, 33:111–113. [***Phytoscutus japonicus***]
234. Ehara, S. and Gotoh, T. (2007b) Five species of spider mites (Acari: Prostigmata: Tetranychidae) from Japan with descriptions of two new species. *Zootaxa*, 1646: 51–58. [***Oligonychus camelliae***, ***Tetranychus misumaiensis***]
235. Ehara, S. and Kishimoto, H. (2007b) The Occurrence of *Typhlodromus (Anthoseius) transvaalensis* (Nesbitt) (Acari: Phytoseiidae) in Japan. *J. Acarol. Soc. Japan*, 16: 139–143.
236. Gotoh, T., Abe, S., Kitashima, Y. and Ehara, S. (2007) Divergence in host range and reproductive compatibility in three strains of *Oligonychus gotohi* Ehara (Acari: Tetranychidae). *Internat. J. Acarol.*, 33: 7–13.
237. Ehara, S., Gotoh, T., Kadono, F. and Okabe, K. (2007) *A Guide to the Plant Mites of Japan*. Plant Protection, Special Issue No. 10, Japan Plant Protection Association, Tokyo, 120 pp. [江原昭三・後藤哲雄・上遠野富士夫・岡部貴美子 “植物ダニ類の見分け方” 植物防疫 特別増刊号 No. 10, 日本植物防疫協会 (東京)]
238. Ehara, S. and Gotoh, T. (2008a) A new species of *Eotetranychus* spider mite (Arachnida: Acari: Tetranychidae) from *Tilia* (Tiliaceae) in Hokkaido. *Species Diversity*, 13: 189–193. [***Eotetranychus tiliaecola***]
239. Ehara, S., Gotoh, T. and Hong, X.-Y. (2008) Two new species of *Tetranychus* (Acari: Tetranychidae) infesting corn in Inner Mongolia, China. *Internat. J. Acarol.*, 34: 339–345. [***Tetranychus huhhotensis***, ***Tetranychus zeae***]
240. Ehara, S. and Gotoh, T. (eds.) (2008b) *Colored Guide to the Phytophagous Mites of Japan and Their Natural Enemies (Revised Edition)*. Nissan Chemical Industry Co., Ltd., Tokyo. 110 pp. [江原昭三 (監修)・後藤哲雄 (編) “ポケット版 改訂 植物ダニ図鑑” 日産化学工業株式会社 (東京)]
241. Ohashi, K., Ehara, S., Kunimoto, Y., Amano, H. and Takafuji, A. (2009, in press) The occurrence of *Schizotetranychus baltazari* Rimando (Acari: Tetranychidae) in Japan. *J. Acarol. Soc. Japan*, 18: (in press)
242. Ehara, S. and Gotoh, T. (eds.) (2009, in press) *Colored Guide to the Plant Mites of Japan*. Zenkoku Nōson Kyōiku Kyōkai, Tokyo [江原昭三・後藤哲雄 (編) “原色植物ダニ検索図鑑” 全国農村教育協会 (東京)]

#### Addendum as an obituary on Shōzō Ehara (1928–2008)

In the course of preparing this manuscript, the first author of the list, Dr. Shōzō Ehara, Professor Emeritus of Tottori University, passed away on 7 October 2008 at the age of 80 after his struggle with lung cancer for more than 10 months. In memory of his long and enormous contribution to acarid taxonomy and applied acarology, we decided to make this reference list to include all the publications (including those written in Japanese) made by him. Also added here below is his brief biography.

Dr. Shōzō Ehara (Fig. 1), was born on 5 May 1928 in Otaru of Hokkaido and moved to Sapporo at the age of 5 due to a transfer of



Fig. 1. Dr. Shôzô Ehara on his 72nd birthday in 2000.

his father, Genjiro Ehara, who held prominent positions as principal of several high schools. Immediately after graduation from the Department of Biology (Zoology Major), Faculty of Science of Hokkaido University in 1951, he started his career in biological research as a research associate in the Laboratory of Systematic Zoology led by Prof. Tohru Uchida (1897–1981) who was one of the leading zoologists in Japan in those days. Initially, Ehara had engaged in the comparative morphology of reproductive organs of cerambycid beetles as an extension of insect-collecting as a hobby from his earlier teenagehood. However, soon after getting a job in Uchida's lab, he initiated the taxonomy of Japanese phytophagous mites and their phytoseiid predators, under the influence of Prof. Uchida, who also studied water mites besides hydrozoa, and Uchida's student, Dr. Kiyoshi Asanuma (1917–1999) who was a taxonomist of ticks, and Dr. Taiji Imamura (1913–2004) who worked also on taxonomy of water mites.

Starting with the first description of two new species of spider mites parasitic on conifers, *Paratetranychus hondoensis* (Fig. 2), *Paratetranychus inouei* (Ehara 1954), he has consecutively described phytophagous and predaceous mite species on plants, especially economically important species prior to those on wild plants. This series of taxonomical work provided solid basis for the development of applied acarology in Japan and he received the Award for Distinguished Research from the Japanese Society of Applied Entomology and Zoology in 1969. Parallel to the taxonomical work, he also studied internal anatomy of reproductive organs of some mite species and received doctoral degree (Doctor of Science) from Hokkaido University with the thesis entitled "Comparative studies on the internal anatomy of some Japanese acarinids" in 1960.

In the fall of 1967, he moved to Tottori, southwestern Honshu,

Japan, to teach biology at the Faculty of Education of Tottori University as an Associate Professor, and became a Professor in 1971. He also served as councilor of the university (1981–1993) and director of the University Library (1984–1986) until his retirement in 1994. In his 43 years of service he has taught hundreds of students.

In spite of his many responsibilities at the Tottori University, he still found time to publish many articles on mite taxonomy with great enthusiasm and has stood tall among his academic peers. He published first pictorial book for identification of Japanese ticks and mites "Illustrations of the Mites and Ticks of Japan" in 1980 and a similar book on phytophagous mites "Plant Mites of Japan in Colors" in 1993 as the editor. Of the 33 books he contributed to, 14 were either edited, or written by him as senior or sole author. He has served in several academic societies: as the president of the Japanese Association for Acarology (now the Acarological Society of Japan); as councilors in the Japanese Society of Systematic Zoology, the Japanese Society of Soil Zoology, and the Acarological Society of Japan; as a member of the editorial board of "International Journal of Acarology" and "Systematics and Applied Acarology". He received honorary membership from both the Acarological Society of Japan and the Arachnological Society of Japan in 2007.

He also considerably contributed to the development of culture and nature conservation in Tottori Prefecture, by joining several committees of the prefecture such as the Council of the Tottori Prefectural Museum, the Council for the Protection of Cultural Properties as a commissioner, and as a chairperson. For these achievements, he was commended by the Minister of Education, Culture, Sports, Science and Technology of Japan as a Distinguished

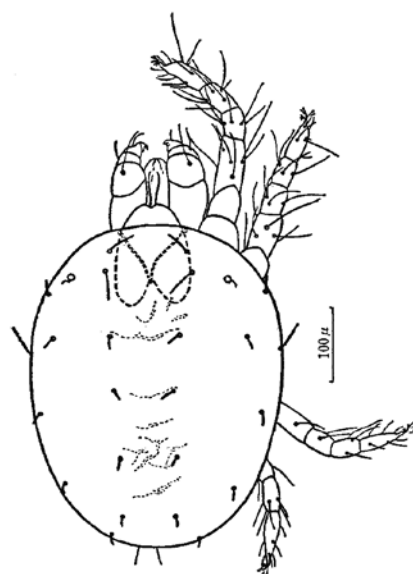


Fig. 2. *Oligonychus hondoensis* (Ehara, 1954) (Jpn N: Sugino-hadani), first mite species described as new by Shôzô Ehara in 1954 (after Ehara 1980)

Regional Cultural Contributor in 2003.

According to his above-mentioned bibliography, he published more than 240 articles of which more than 160 are original papers. Amazingly, even after his retirement, he constantly continued his work on mite taxonomy at home, and the number of species described as new in the papers published after his retirement reached as many as 44. His never-ending enthusiasm for research has stimulated many acarologists, arachnologists, and entomologists, in Japan and other countries, especially of Asia.

Nobuo Tsurusaki, Kazunori Ohashi and Tetsuo Gotoh

#### Index: Scientific names (Alphabetical order)

- Aegyptobia arenaria* Ehara, 1982  
*Agistemus citrinus* Ehara, 1967  
*Agistemus giganteus* Ehara & Wongsiri, 1984  
*Agistemus iburiensis* Ehara, 1985  
*Agistemus lobatus* Ehara, 1964  
*Agistemus malayensis* Ehara, 1993  
*Agistemus orbicularis* Ehara & Oomen-Kalsbeek, 1983  
*Agistemus pieteri* Ehara & Oomen-Kalsbeek, 1983  
*Agistemus siamensis* Ehara & Wongsiri, 1984  
*Agistemus sumatrensis* Ehara & Oomen-Kalsbeek, 1983  
*Agistemus summersi* Ehara, 1964  
*Agistemus takagii* Ehara, 1993  
*Agistemus thaianus* Ehara & Wongsiri, 1984  
*Amblyseiulella amanoi* Ehara, 1994  
*Amblyseiulella thoi* Ehara, 2002  
*Amblyseiulella yaeyamana* Ehara & Amano, 2002  
*Amblyseius ainu* Ehara, 1967  
*Amblyseius aizawai* Ehara & Bhandhufalck, 1977  
*Amblyseius akahirai* Ehara, 1966  
*Amblyseius alpicola* Ehara, 1982  
*Amblyseius anuwati* Ehara & Bhandhufalck, 1977  
*Amblyseius ezoensis* Ehara, 1967  
*Amblyseius firmus* Ehara, 1967  
*Amblyseius haimatus* Ehara, 1967  
*Amblyseius hidakai* Ehara & Bhandhufalck, 1977  
*Amblyseius hinoki* Ehara, 1972  
*Amblyseius hirotae* Ehara, 1985  
*Amblyseius inabanus* Ehara, 1972  
*Amblyseius inouei* Ehara & Moraes, 1998  
*Amblyseius ishikawai* Ehara, 1972  
*Amblyseius ishizuchiensis* Ehara, 1972  
*Amblyseius kaguya* Ehara, 1966  
*Amblyseius kokufuensis* Ehara & Kato, 1994  
*Amblyseius koyamanus* Ehara & Yokogawa, 1977  
*Amblyseius liturivorus* Ehara, 1982  
*Amblyseius makuwa* Ehara, 1972  
*Amblyseius maritimus* Ehara, 1967  
*Amblyseius morii* Ehara, 1967  
*Amblyseius nemotoi* Ehara & Amano, 1998  
*Amblyseius neofirmus* Ehara & Okada, 1994  
*Amblyseius neoparaki* Ehara, 1972  
*Amblyseius neotropicus* Ehara, 1966  
*Amblyseius nicholsi* Ehara & Lee, 1971  
*Amblyseius ochii* Ehara & Yokogawa, 1977  
*Amblyseius oguroi* Ehara, 1964  
*Amblyseius okinawanus* Ehara, 1967  
*Amblyseius okumae* Ehara & Bhandhufalck, 1977  
*Amblyseius orientalis* Ehara, 1959  
*Amblyseius paraki* Ehara, 1967  
*Amblyseius sakagami* Ehara, 1966  
*Amblyseius shiganus* Ehara, 1972  
*Amblyseius siaki* Ehara & Lee, 1971  
*Amblyseius siamensis* Ehara & Bhandhufalck, 1977  
*Amblyseius sojaensis* Ehara, 1964  
*Amblyseius sumatrensis* Ehara, 2002  
*Amblyseius taiwanicus* Ehara, 1970  
*Amblyseius tsugawai* Ehara, 1959  
*Amblyseius urumanus* Ehara, 1967  
*Amblyseius wongsirii* Ehara & Bhandhufalck, 1977  
*Amblyseius yanoi* Ehara, 1972  
*Aponychus nakaoi* Ehara & Wongsiri, 1975  
*Aponychus siamensis* Ehara & Wongsiri, 1975  
*Bdella uchidai* Ehara, 1961  
*Bryobia japonica* Ehara & Yamada, 1968  
*Cheyllostigmaeus californicus* Summers & Ehara, 1965  
*Cheyllostigmaeus multidentatus* Summers & Ehara, 1965  
*Dolichotetranychus zoysiae* Ehara, 2004  
*Eotetranychus asiaticus* Ehara, 1966  
*Eotetranychus boreus* Ehara, 1969  
*Eotetranychus celtis* Ehara, 1965  
*Eotetranychus cornicola* Ehara, 1989  
*Eotetranychus dissectus* Ehara, 1987  
*Eotetranychus geniculatus* Ehara, 1969  
*Eotetranychus kankitus* Ehara, 1955  
*Eotetranychus nomurai* Ehara, 1989  
*Eotetranychus quercifoliae* Ehara & Gotoh, 1997  
*Eotetranychus rubicans* Ehara, 1999  
*Eotetranychus shii* Ehara, 1965  
*Eotetranychus spectabilis* Ehara, 1987  
*Eotetranychus suvipakiti* Ehara & Wongsiri, 1975

- Eotetranychus thailandicus* Ehara & Wongsiri, 1975  
*Eotetranychus tiliaecola* Ehara & Gotoh, 2008  
*Eotetranychus toyoshimai* Ehara & Gotoh, 2006  
*Eotetranychus tsugaruensis* Ehara, 1989  
*Eotetranychus uchidai* Ehara, 1956  
*Eryngiopus yasumatsui* Ehara & Wongsiri, 1984  
*Eurytetranychus japonicus* Ehara, 1980  
*Eurytetranychus koreanus* Ryu & Ehara, 1995  
*Exothorhis okinawana* Ehara, 1967  
*Gymnostigmaeus akaminei* Ehara & Ueckermann, 2006  
*Hemicheyletia morii* Ehara, 1988  
*Heteroteneriffia tokiokai* Ehara, 1965  
*Indoseiulus santosoi* Ehara, 2005  
*Iphiseius formosanus* Ehara, 1970  
*Lasioseius japonicus* Ehara, 1965  
*Lasioseius sugawarai* Ehara, 1964  
*Neoteneriffiella japonica* Ehara, 1965  
*Okiseius subtropicus* Ehara, 1967  
*Oligonychus amiensis* Ehara & Gotoh, 2007  
*Oligonychus camelliae* Ehara & Gotoh, 2007  
*Oligonychus castaneae* Ehara & Gotoh, 2007  
*Oligonychus gotohi* Ehara, 1999  
*Oligonychus kadarsani* Ehara, 1969  
*Oligonychus obliquus* Ehara & Masaki, 2001  
*Oligonychus pustulosus* Ehara, 1962  
*Oligonychus rubicundus* Ehara, 1971  
*Oligonychus shinkajii* Ehara, 1964  
*Oligonychus sumatranus* Ehara, 2004  
*Oligonychus tsudomei* Ehara, 1966  
*Oligonychus uruma* Ehara, 1966  
*Oligonychus yasumatsui* Ehara & Wongsiri, 1975  
*Panonychus (Sasanychus) akitanus* Ehara, 1978  
*Panonychus bambusicola* Ehara & Gotoh, 1991  
*Panonychus osmanthi* Ehara & Gotoh, 1996  
*Panonychus thelytokus* Ehara & Gotoh, 1992  
*Paracheyletia bakeri* Ehara, 1962  
*Paratetranychus clavatus* Ehara, 1959  
*Paratetranychus hondoensis* Ehara, 1954  
*Paratetranychus inouei* Ehara, 1954  
*Paratetranychus karamatus* Ehara, 1956  
*Phytoscutus japonicus* Ehara & Kishimoto, 2007  
*Phytoseius blakistoni* Ehara, 1966  
*Phytoseius campestris* Ehara, 1967  
*Phytoseius capitatus* Ehara, 1966  
*Phytoseius chanti* Ehara, 1966  
*Phytoseius huangi* Ehara, 1970  
*Phytoseius ikeharai* Ehara, 1967  
*Phytoseius kazusanus* Ehara, 1994  
*Phytoseius kishii* Ehara, 1967  
*Phytoseius koreanus* Ryu & Ehara, 1991  
*Phytoseius malaysianus* Ehara, 2006  
*Phytoseius mumai* Ehara, 1966  
*Phytoseius neoferox* Ehara & Bhandhufalck, 1977  
*Phytoseius nipponicus* Ehara, 1962  
*Phytoseius quercicola* Ehara, 1994  
*Phytoseius seungtaii* Ryu & Ehara, 1993  
*Phytoseius sonunensis* Ryu & Ehara, 1993  
*Phytoseius tenuiformis* Ehara, 1978  
*Platyseiella acuta* Ehara, 2002  
*Sasanychus pusillus* Ehara & Gotoh, 1987  
*Schizotetranychus approximatus* Ehara, 1988  
*Schizotetranychus bhandhufalcki* Ehara & Wongsiri, 1975  
*Schizotetranychus brevisetosus* Ehara, 1989  
*Schizotetranychus cercidiphylli* Ehara, 1973  
*Schizotetranychus chiangmaiensis* Ehara & Wongsiri, 1975  
*Schizotetranychus colocasiae* Ehara, 1988  
*Schizotetranychus gilvus* Ehara & Ohashi, 2005  
*Schizotetranychus kochummeni* Ehara, 1988  
*Schizotetranychus laevidorsatus* Ehara, 1988  
*Schizotetranychus leguminosus* Ehara, 1973  
*Schizotetranychus malayanus* Ehara, 1988  
*Schizotetranychus recki* Ehara, 1957  
*Schizotetranychus saitoi* Ehara, 1988  
*Schizotetranychus vermiculatus* Ehara & Wongsiri, 1975  
*Schizotetranychus yoshimekii* Ehara & Wongsiri, 1975  
*Tenuipalpus boninensis* Ehara, 1982  
*Tenuipalpus masakii* Ehara & Ueckermann, 2003  
*Tetranychus bambusicola* Ehara, 1988  
*Tetranychus ezoensis* Ehara, 1962  
*Tetranychus huhhotensis* Ehara, Gotoh & Hong, 2008  
*Tetranychus malaysiensis* Ehara, 1988  
*Tetranychus misumaiensis* Ehara & Gotoh, 2007  
*Tetranychus okinawanus* Ehara, 1995  
*Tetranychus parakanzawai* Ehara, 1999  
*Tetranychus phaselus* Ehara, 1960  
*Tetranychus pueraricola* Ehara & Gotoh, 1996  
*Tetranychus quercivorus* Ehara & Gotoh, 1990  
*Tetranychus taiwanicus* Ehara, 1969  
*Tetranychus takafujii* Ehara & Ohashi, 2002  
*Tetranychus truncatus* Ehara, 1956  
*Tetranychus zaeae* Ehara, Gotoh & Hong, 2008  
*Tetranychopsis borealis* Ehara & Mori, 1969

<i>Thoribdella japonica</i> Ehara, 1961	イヌシデアケハダニ	<i>Eotetranychus rubicans</i> Ehara, 1999
<i>Transeius fulvus</i> Ehara & Toyoshima, 2006	イネツメハダニ	<i>Oligonychus shinkajii</i> Ehara, 1964
<i>Tuckerella japonica</i> Ehara, 1975	イブリナガヒシダニ	<i>Agistemus iburiensis</i> Ehara, 1985
<i>Typhlodromus armiger</i> Ehara & Amano, 1998	イログロカブリダニ	<i>Transeius fulvus</i> Ehara & Toyoshima, 2006
<i>Typhlodromus bambusae</i> Ehara, 1964		
<i>Typhlodromus borealis</i> Ehara, 1967	ウシノセアケハダニ	<i>Eotetranychus tiliaeicola</i> Ehara & Gotoh, 2008
<i>Typhlodromus chinensis</i> Ehara & Lee, 1971		
<i>Typhlodromus deogyuensis</i> Ryu & Ehara, 1990	ウスゲカブリダニ	<i>Typhlodromus ternatus</i> Ehara, 1972
<i>Typhlodromus higoensis</i> Ehara, 1985	ウスゲユビダニ	<i>Neoteneriffiola japonica</i> Ehara, 1965
<i>Typhlodromus hirashimai</i> Ehara, 1972	ウスナガヒシダニ	<i>Agistemus citrinus</i> Ehara, 1967
<i>Typhlodromus insularis</i> Ehara, 1966	ウチダアケハダニ	<i>Eotetranychus uchidai</i> Ehara, 1956
<i>Typhlodromus japonicus</i> Ehara, 1958	ウルマカブリダニ	<i>Amblyseius urumanus</i> Ehara, 1967
<i>Typhlodromus kadonoi</i> Ehara, 1994	ウルマツメハダニ	<i>Oligonychus uruma</i> Ehara, 1966
<i>Typhlodromus kishimotoi</i> Ehara & Amano, 2006	ウロコツメダニ	<i>Parachyletia bakeri</i> Ehara, 1962
<i>Typhlodromus kiso</i> Ehara, 1972	エゾカブリダニ	<i>Amblyseius ezoensis</i> Ehara, 1967
<i>Typhlodromus miyarai</i> Ehara, 1967	エゾスギツメハダニ	<i>Oligonychus pustulosus</i> Ehara, 1962
<i>Typhlodromus moricola</i> Ehara & Toyoshima, 2006	エゾナガヒシダニ	<i>Agistemus summersi</i> Ehara, 1964
<i>Typhlodromus pseudopyri</i> Ehara & Amano, 1998	エノキアケハダニ	<i>Eotetranychus celtis</i> Ehara, 1965
<i>Typhlodromus ryukyuensis</i> Ehara, 1967	エルムマルハダニ	<i>Panonychus thelytokus</i> Ehara & Gotoh, 1992
<i>Typhlodromus serrulatus</i> Ehara, 1972		
<i>Typhlodromus shibai</i> Ehara, 1981	オオカエデアケハダニ	<i>Eotetranychus dissectus</i> Ehara, 1987
<i>Typhlodromus silvanus</i> Ehara & Kishimoto, 1994	オキナワカブリダニ	<i>Amblyseius okinawanus</i> Ehara, 1967
<i>Typhlodromus takahashii</i> Ehara, 1978	オキナワツツダニ	<i>Exothorhis okinawana</i> Ehara, 1967
<i>Typhlodromus ternatus</i> Ehara, 1972	オチカブリダニ	<i>Amblyseius ochii</i> Ehara & Yokogawa, 1977
<i>Typhlodromus thailandicus</i> Ehara & Bhandhufalck, 1977		
<i>Typhlodromus vulgaris</i> Ehara, 1959	オニカブリダニ	<i>Amblyseius firmus</i> Ehara, 1967
<i>Typhlodromus wonkooi</i> Ryu & Ehara, 1992	オニハダニ	<i>Tetranychopsis borealis</i> Ehara & Mori, 1969
<i>Typhlodromus yamashitai</i> Ehara, 1972		
<i>Typhlodromus yasumatsui</i> Ehara, 1966	カザリマヨイダニ	<i>Lasioseius sugawarai</i> Ehara, 1964
<i>Typhlodromus yokogawae</i> Ehara & Hamaoka, 1980	カシノキマタハダニ	<i>Schizotetranychus brevisetosus</i> Ehara, 1989
<i>Yezonychus sapporensis</i> Ehara, 1978		
<i>Zetzellia javanica</i> Ehara & Oomen-Kalsbeek, 1983	カズサカブリダニ	<i>Phytoseius kazusanus</i> Ehara, 1994
<i>Zetzellia rugosa</i> Ehara & Oomen-Kalsbeek, 1983	カツラマタハダニ	<i>Schizotetranychus cercidiphylli</i> Ehara, 1973
	カラマツツメハダニ	<i>Paratetranychus karamatus</i> Ehara, 1956
	キイカブリダニ	<i>Amblyseius liturivorus</i> Ehara, 1982
	キノカブリダニ	<i>Typhlodromus kiso</i> Ehara, 1972
	キタカブリダニ	<i>Amblyseius ogoro</i> Ehara, 1964
	キタナガヒシダニ	<i>Agistemus lobatus</i> Ehara, 1964
	キタミカブリダニ	<i>Typhlodromus borealis</i> Ehara, 1967
	クリノツメハダニ	<i>Oligonychus castaneae</i> Ehara & Gotoh, 2007
	ケウスハダニ	<i>Yezonychus sapporensis</i> Ehara, 1978
	ケブカカブリダニ	<i>Typhlodromus yokogawae</i> Ehara & Hamaoka, 1980
	ケプトカブリダニ	<i>Phytoseius nipponicus</i> Ehara, 1962

**Index: Japanese names (Domestic species alone) (Japanese syllabary order)**

アイヌカブリダニ	<i>Amblyseius ainu</i> Ehara, 1967
アラカンハダニ	<i>Eurytetranychus japonicus</i> Ehara, 1980
アララギナミハダニ	<i>Tetranychus ezoensis</i> Ehara, 1962
アワケナガハダニ	<i>Tuckerella japonica</i> Ehara, 1975
アンズアケハダニ	<i>Eotetranychus boreus</i> Ehara, 1969
イシイナミハダニ	<i>Tetranychus truncatus</i> Ehara, 1956
イシカワカブリダニ	<i>Amblyseius ishikawai</i> Ehara, 1972
イシヅチカブリダニ	<i>Amblyseius ishizuchiensis</i> Ehara, 1972
イソユビダニ	<i>Heteroteneriffia tokiokai</i> Ehara, 1965
イナバカブリダニ	<i>Amblyseius inabanus</i> Ehara, 1972

コウズケカブリダニ	<i>Amblyseius sojaensis</i> Ehara, 1964	トウヨウカブリダニ	<i>Amblyseius orientalis</i> Ehara, 1959
コウノアケハダニ	<i>Eotetranychus asiaticus</i> Ehara, 1966	トドマツノハダニ	<i>Paratetranychus inouei</i> Ehara, 1954
コクフカブリダニ	<i>Amblyseius kokufuensis</i> Ehara & Kato, 1994	トモエカブリダニ	<i>Phytoseius blakistoni</i> Ehara, 1966
コトマタハダニ	<i>Schizotetranychus gilvus</i> Ehara & Ohashi, 2005	ナミハダニモドキ	<i>Tetranychus pueraricola</i> Ehara & Gotoh, 1996
コナラアケハダニ	<i>Eotetranychus quercifoliae</i> Ehara & Gotoh, 1997	ナンゴクカブリダニ	<i>Amblyseius kaguya</i> Ehara, 1966
コヤマカブリダニ	<i>Amblyseius koyamanus</i> Ehara & Yokogawa, 1977	ナンゴクナミハダニ	<i>Tetranychus okinawanus</i> Ehara, 1995
サイタマカブリダニ	<i>Amblyseius nemotoi</i> Ehara & Amano, 1998	ナンポウカブリダニ	<i>Amblyseiulella amanoi</i> Ehara, 1994
サガミナミハダニ	<i>Tetranychus phaselus</i> Ehara, 1960	ニセオニカブリダニ	<i>Amblyseius neofirmus</i> Ehara & Okada, 1994
ササカブリダニ	<i>Amblyseius neoparaki</i> Ehara, 1972	ニセカツラアケハダニ	<i>Eotetranychus tsugaruensis</i> Ehara, 1989
ササマルハダニ	<i>Panonychus bambusicola</i> Ehara & Gotoh, 1991	ニセカンザワハダニ	<i>Tetranychus parakanzawai</i> Ehara, 1999
サヤマタハダニ	<i>Schizotetranychus leguminosus</i> Ehara, 1973	ニセコヤマカブリダニ	<i>Amblyseius hirotae</i> Ehara, 1985
サロベツカブリダニ	<i>Amblyseius morii</i> Ehara, 1967	ニセパイライカブリダニ	<i>Typhlodromus pseudopyri</i> Ehara & Amano, 1998
シイノキマタハダニ	<i>Eotetranychus shii</i> Ehara, 1965	ニョゴツメハダニ	<i>Oligonychus amiensis</i> Ehara & Gotoh, 2007
シガカブリダニ	<i>Amblyseius shiganus</i> Ehara, 1972	ノコギリカブリダニ	<i>Typhlodromus kishimotoi</i> Ehara & Amano, 2006
シコクカブリダニ	<i>Phytoseius capitatus</i> Ehara, 1966	ハナガサヒメハダニ	<i>Tenuipalpus boninensis</i> Ehara, 1982
シバズジナガヒシダニ	<i>Gymnostigmaeus akaminei</i> Ehara & Ueckermann, 2006	ハマナスカブリダニ	<i>Amblyseius maritimus</i> Ehara, 1967
シバタマヨイダニ	<i>Lasioseius japonicus</i> Ehara, 1965	パラキカブリダニ	<i>Amblyseius paraki</i> Ehara, 1967
シバホソヒメハダニ	<i>Dolichotetranychus zoysiae</i> Ehara, 2004	バラトカブリダニ	<i>Typhlodromus takahashii</i> Ehara, 1978
シマモリカブリダニ	<i>Okiseius subtropicus</i> Ehara, 1967	ヒゴカブリダニ	<i>Typhlodromus higoensis</i> Ehara, 1985
シュレイカブリダニ	<i>Phytoseius ikeharai</i> Ehara, 1967	ヒノキカブリダニ	<i>Amblyseius hinoki</i> Ehara, 1972
シンシュウカブリダニ	<i>Typhlodromus kadonoi</i> Ehara, 1994	ヒメイソテングダニ	<i>Bdella uchidai</i> Ehara, 1961
スギノハダニ	<i>Paratetranychus hondoensis</i> Ehara, 1954	ヒメカエデアケハダニ	<i>Eotetranychus spectabilis</i> Ehara, 1987
ススキツメハダニ	<i>Oligonychus rubicundus</i> Ehara, 1971	ヒメササマタハダニ	<i>Schizotetranychus recki</i> Ehara, 1957
スナヒメハダニ	<i>Aegyptobia arenaria</i> Ehara, 1982	ヒメミドリハダニ	<i>Sasanychus pusillus</i> Ehara & Gotoh, 1987
セトカブリダニ	<i>Typhlodromus insularis</i> Ehara, 1966	ヒメユリカブリダニ	<i>Typhlodromus miyarai</i> Ehara, 1967
ソウヤカブリダニ	<i>Phytoseius campestris</i> Ehara, 1967	ヒラシマカブリダニ	<i>Typhlodromus hirashimai</i> Ehara, 1972
タカネカブリダニ	<i>Amblyseius alpicola</i> Ehara, 1982	ヒレカブリダニ	<i>Phytoseius huangi</i> Ehara, 1970
タケカブリダニ	<i>Typhlodromus bambusae</i> Ehara, 1964	フシカブリダニ	<i>Typhlodromus serrulatus</i> Ehara, 1972
タテシナカブリダニ	<i>Phytoseius quercicola</i> Ehara, 1994	フツウカブリダニ	<i>Typhlodromus vulgaris</i> Ehara, 1959
タマゲカブリダニ	<i>Typhlodromus armiger</i> Ehara & Amano, 1998	ブナカツメハダニ	<i>Oligonychus gotohi</i> Ehara, 1999
チンジュカブリダニ	<i>Typhlodromus silvanus</i> Ehara & Kishimoto, 1994	ホオノキアケハダニ	<i>Eotetranychus toyoshimai</i> Ehara & Gotoh, 2006
ツバキツメハダニ	<i>Oligonychus camelliae</i> Ehara & Gotoh, 2007	ホソカブリダニ	<i>Phytoseius tenuiformis</i> Ehara, 1978
デイリカブリダニ	<i>Amblyseiulella yaeyamana</i> Ehara & Amano, 2002	ホツカイカブリダニ	<i>Phytoseius kishii</i> Ehara, 1967
		マクワカブリダニ	<i>Amblyseius makuwa</i> Ehara, 1972
		マツツメハダニ	<i>Paratetranychus clavatus</i> Ehara, 1959
		マルビラハダニ	<i>Bryobia japonica</i> Ehara & Yamada, 1968
		マレーシアツメダニ	<i>Hemicheyletia morii</i> Ehara, 1988
		ミズキアケハダニ	<i>Eotetranychus cornicola</i> Ehara, 1989

ミズナラクダハダニ	<i>Tetranychus quercivorus</i> Ehara & Gotoh, 1990	モクセイマルハダニ	<i>Panonychus osmanthi</i> Ehara & Gotoh, 1996
ミスマイナミハダニ	<i>Tetranychus misumaiensis</i> Ehara & Gotoh, 2007	ヤスマツカブリダニ	<i>Typhlodromus yasumatsui</i> Ehara, 1966
ミソカブリダニ	<i>Typhlodromus shibai</i> Ehara, 1981	ヤノカブリダニ	<i>Amblyseius yanoi</i> Ehara, 1972
ミチノクアケハダニ	<i>Eotetranychus geniculatus</i> Ehara, 1969	ヤマシタカブリダニ	<i>Typhlodromus yamashitai</i> Ehara, 1972
ミチノクカブリダニ	<i>Amblyseius tsugawai</i> Ehara, 1959	ヤマトカブリダニ	<i>Typhlodromus japonicus</i> Ehara, 1958
ミツユビナミハダニ	<i>Tetranychus takafujii</i> Ehara & Ohashi, 2002	ヤマトテングダニ	<i>Thoribdella japonica</i> Ehara, 1961
ミドリハダニ	<i>Panonychus (Sasanychus) akitanus</i> Ehara, 1978	ヨコアミカブリダニ	<i>Phytoscutus japonicus</i> Ehara & Kishimoto, 2007
ミヤケアケハダニ	<i>Eotetranychus kankitus</i> Ehara, 1955	リクチュウカブリダニ	<i>Typhlodromus moricola</i> Ehara & Toyoshima, 2006
ミヤマカブリダニ	<i>Amblyseius haimatus</i> Ehara, 1967	リュウキュウカブリダニ	<i>Typhlodromus ryukyuensis</i> Ehara, 1967
ムクノキアケハダニ	<i>Eotetranychus nomurai</i> Ehara, 1989	リュウキュウツメハダニ	<i>Oligonychus tsudomei</i> Ehara, 1966